

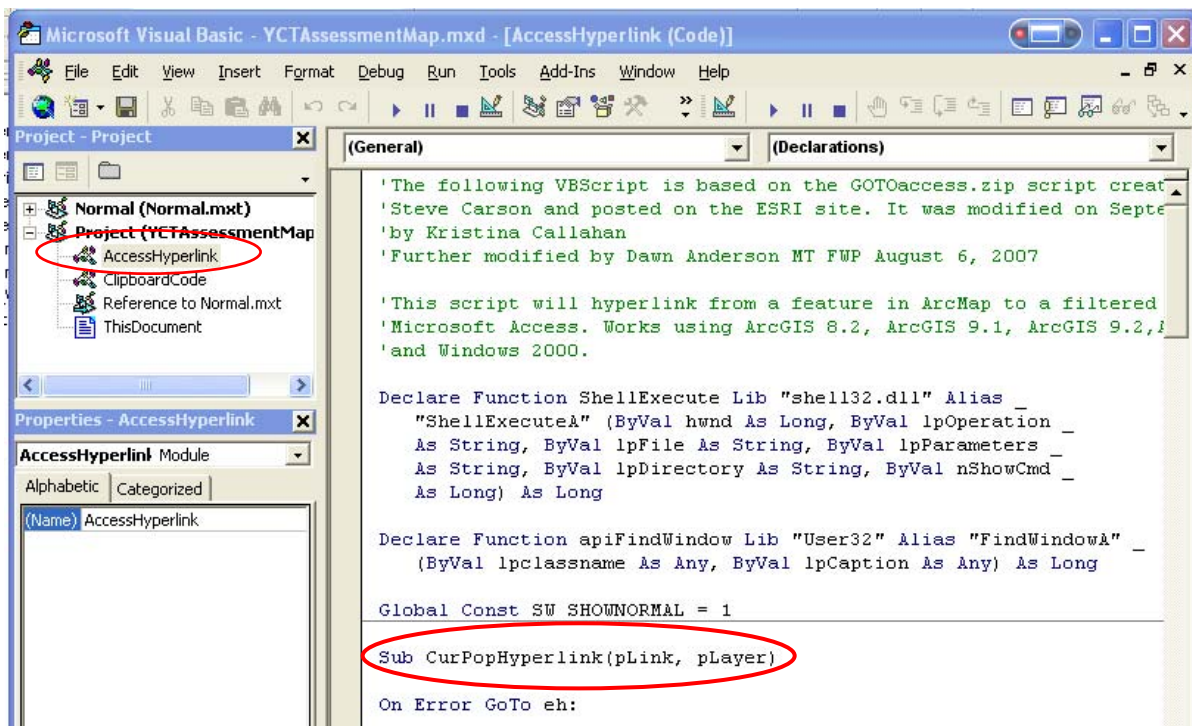
## Setting up hyperlinks in ArcMap 9.2

\* If you saved the files on the CD into C:\YCTAssessment, you can ignore these directions unless you are having problems with the hyperlinks.

Hyperlinks exist in the ArcMap project that allows a user to click on a feature on the map and have the database open a form to the selected record. In order for this feature to work on your machine, the links in the VBA module in ArcMap will need to be updated if you have saved the files to a folder other than C:\YCTAssessment. This is an easy process but it will require the user to know the location files have been saved to.

Open the YCTAssesmentMap project. Re-point the layers if the links have been broken.

In ArcMap select Tools -> Macros -> Visual Basic Editor.  
Double click on the "AccessHyperlink" if it is not open.



Scroll to the "Sub CurPopHyperlink" code. On the line which starts "StartDoc =" replace the file location with the location you saved the YCTAssessmentDB to if other than C:\YCTAssessment. All file locations in the hyperlink code will need to be updated to the location the files have been saved to. This can be also be accomplished with the "Replace" command in Visual Basic (Edit -> Replace. Find What: C:\YCTAssessmentDB.mdb Replace with: Your directory\Folder\YCTAssessmentDB.mdb). In addition to the file name the directory "C:\" will have to be updated to the changed directory. Save your changes.

```
Sub CurPopHyperlink(pLink, pLayer)

On Error GoTo eh:

Dim pHyperlink As IHyperlink
Set pHyperlink = pLink
Dim pFLayer As IFeatureLayer
Set pFLayer = pLayer
Dim thestring As String
thestring = pHyperlink.Link

Dim hwnd
Dim StartDoc
hwnd = apiFindWindow("OPUSAPP", "0")

'opens Microsoft Access database
StartDoc = ShellExecute(hwnd, "open", "C:\YCTAssessment\YCTAssessmentDB.mdb", "", "C:\", SW_SHOWNORMAL)

Dim Accapp As Access.Application
Set Accapp = GetObject("C:\YCTAssessment\YCTAssessmentDB.mdb")

Accapp.DoCmd.OpenForm "frmCurPop", acNormal, , ("[CurPopID]=" & Chr(34) & thestring & Chr(34))
Accapp.CurrentProject.Application.DoCmd.OpenForm "FrmCurPop", acNormal, , ("[CurPopID]=" & Chr(34) & thestring &
Exit Sub
```

## Setting the Layers to Hyperlink

Check the properties of all the 2008 shapefiles, except Historic to make sure the hyperlink code is set up. Do this by right clicking on each layer and select its properties. Select the "Display" tab. If the box is checked, there is a field name in the drop down box and "Macro" is selected the hyperlinks are already set.

If the hyperlink information is missing follow the steps below.

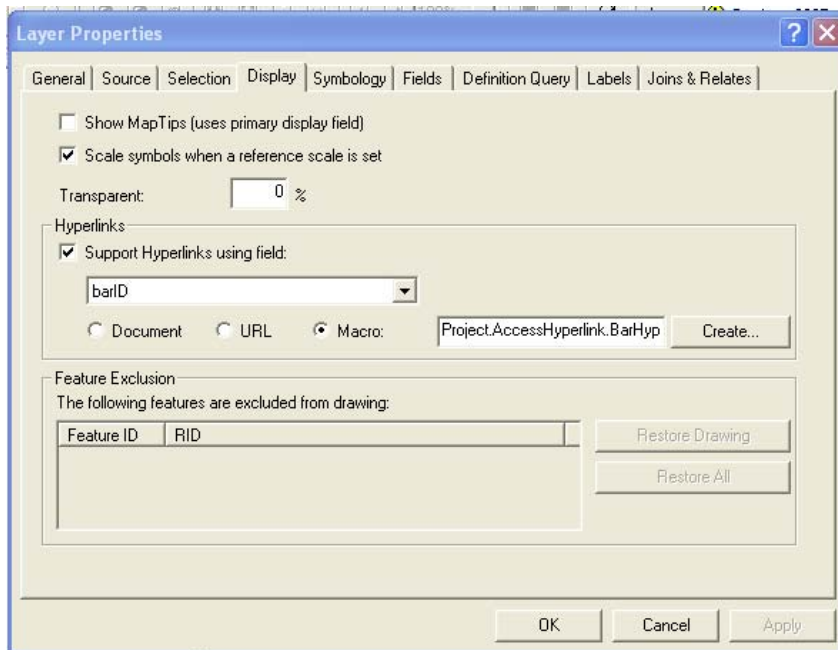
Check the box to support hyperlinks.

For the Barriers\_2008 layer in the drop down box select "barID"

Check the "Macro" option.

In the macro name type: "Project.AccessHyperlink.BarHyperlink". Do not click "Create".

Click Ok.



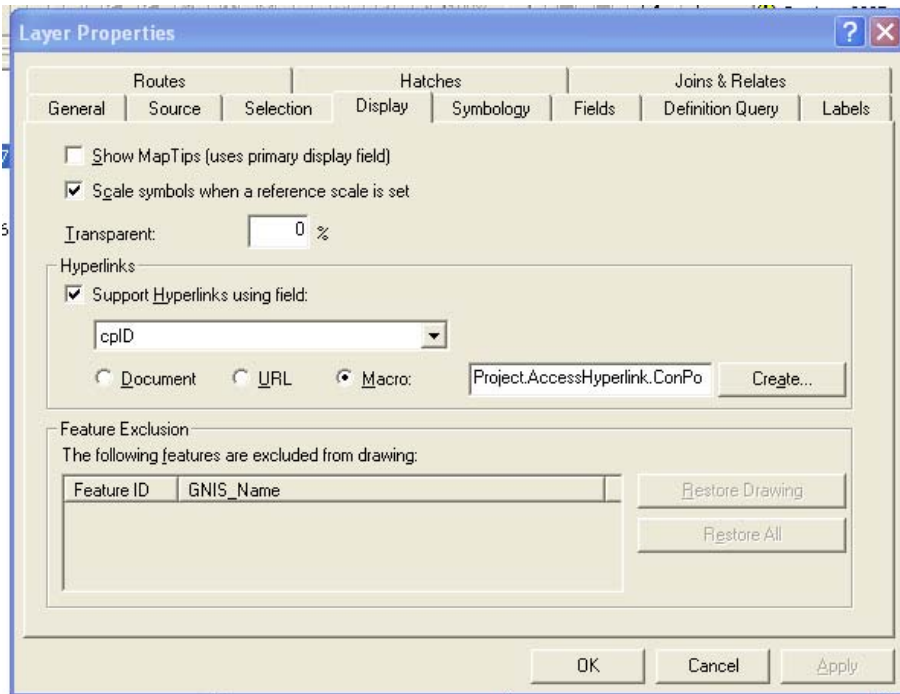
For the Conservation Populations\_2008 layer:

In the drop down box select "cpID"

Check the "Macro" option.

In the macro name type: "Project.AccessHyperlink.ConPopHyperlink". Do not click "Create".

Click Ok.



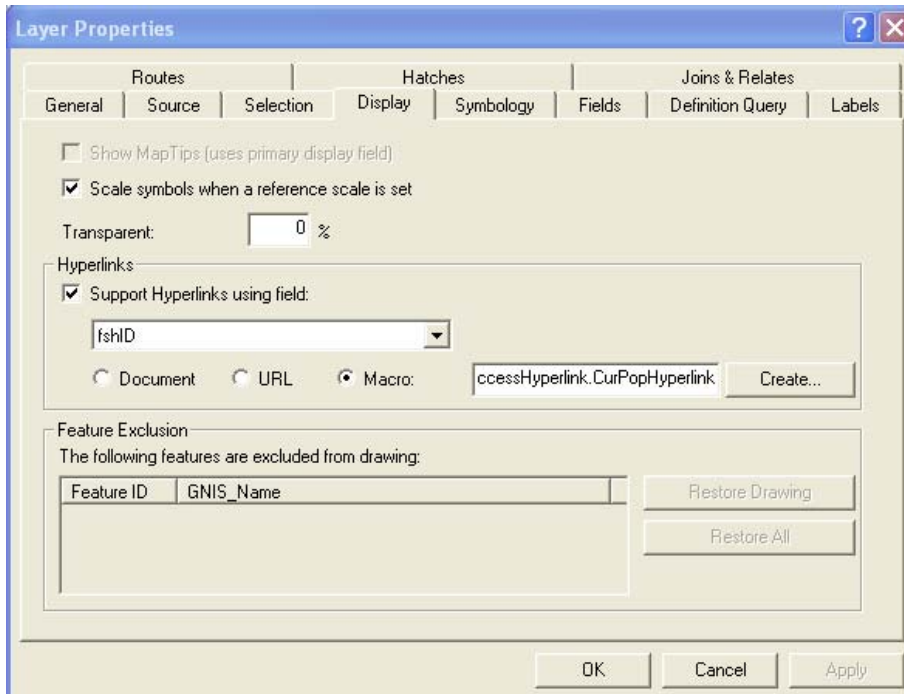
For the CurrentDistribution\_2008 layer:

In the drop down box select "fshID"

Check the "Macro" option.

In the macro name type: "Project.AccessHyperlink.CurPopHyperlink". Do not click "Create".

Click Ok.



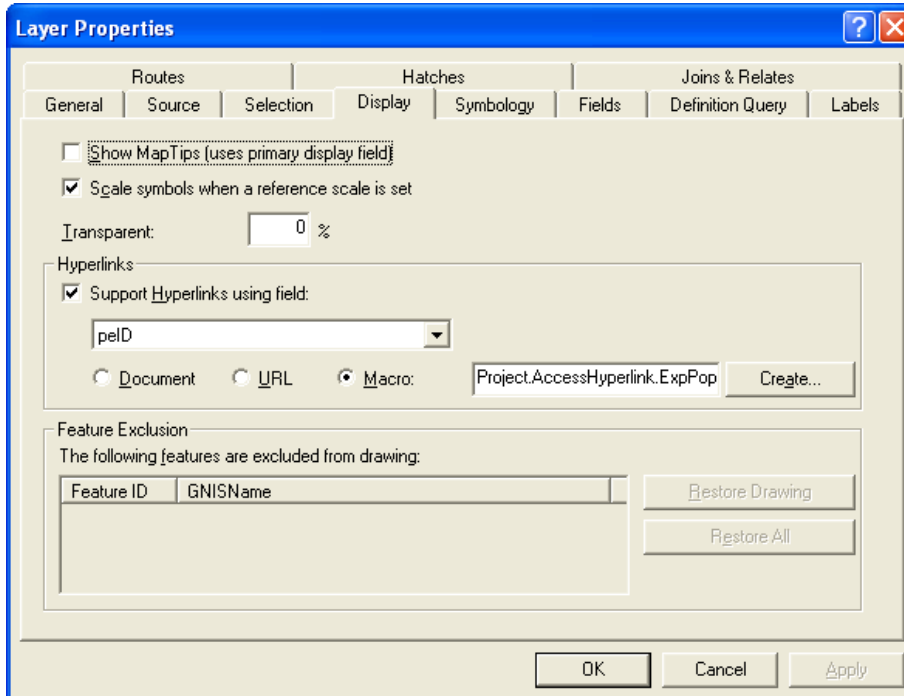
For the ExpansionPopulations\_2008 layer:

In the drop down box select "peID"

Check the "Macro" option.

In the macro name type: "Project.AccessHyperlink.ExpPopHyperlink". Do not click "Create".

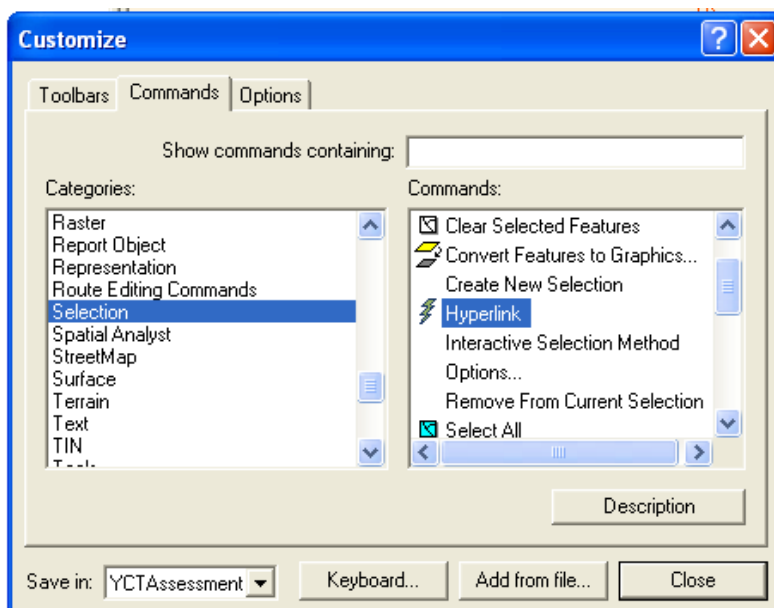
Click Ok.



## Displaying the Hyperlink Tool

If the "Hyperlink" tool is not currently in a toolbar it can be added using the following procedure in ArcGIS:

Tools -> Customize -> CommandTab -> Scroll to "Selection" in the left hand window -> Select "Hyperlink" from the right hand window. Drag the tool to an existing toolbar.



## Test the hyperlinks



1. Click the hyperlink tool
2. The features that are hyperlinked will turn a different color. The default is blue.
3. Hover the lightning bolt over a feature. The id of the feature will be displayed in a box.
4. Click on a feature.
5. If there are multiple features with hyperlinks the hyperlinks dialog box will appear and ask which feature you want.
6. Select a feature and click "Jump"
7. If the YCT Assessment database is not open it will open and will open the appropriate form filtered to the selected record.
8. If there is only one hyperlink feature such as a barrier, the hyperlink dialog box will not be displayed. The database will just open to the correct record on the form.
9. If you click the hyperlink and get an "Error in hyperlink code" message the code behind the hyperlink is incorrect. Be sure that if you saved the files to a directory other than C:\YCTAssessments you have changed the file locations in all areas of the code.
10. If you are still having trouble with the hyperlinks check to see if the Access database has a lock file. Clearing this lock will allow the hyperlinks to work. This typically means the ArcMap project and database will need to be closed and re-opened.

If there are questions or issues with either the database or the map contact:

Dawn Anderson

MT Fish, Wildlife & Parks

406-444-3373

dawanderson@mt.gov