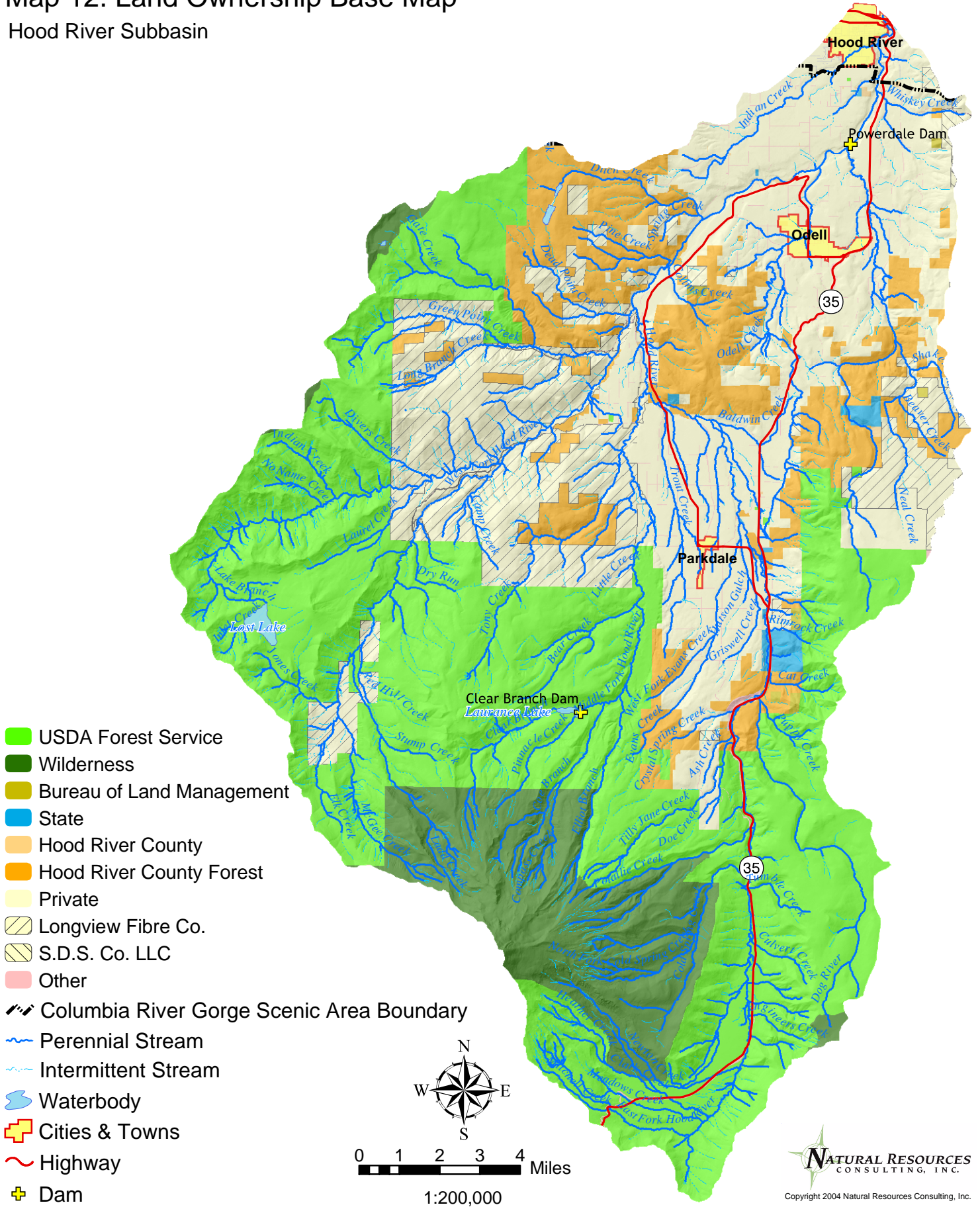
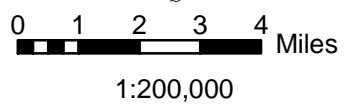


Map 12. Land Ownership Base Map

Hood River Subbasin



- USDA Forest Service
- Wilderness
- Bureau of Land Management
- State
- Hood River County
- Hood River County Forest
- Private
- Longview Fibre Co.
- S.D.S. Co. LLC
- Other
- Columbia River Gorge Scenic Area Boundary
- Perennial Stream
- Intermittent Stream
- Waterbody
- Cities & Towns
- Highway
- Dam



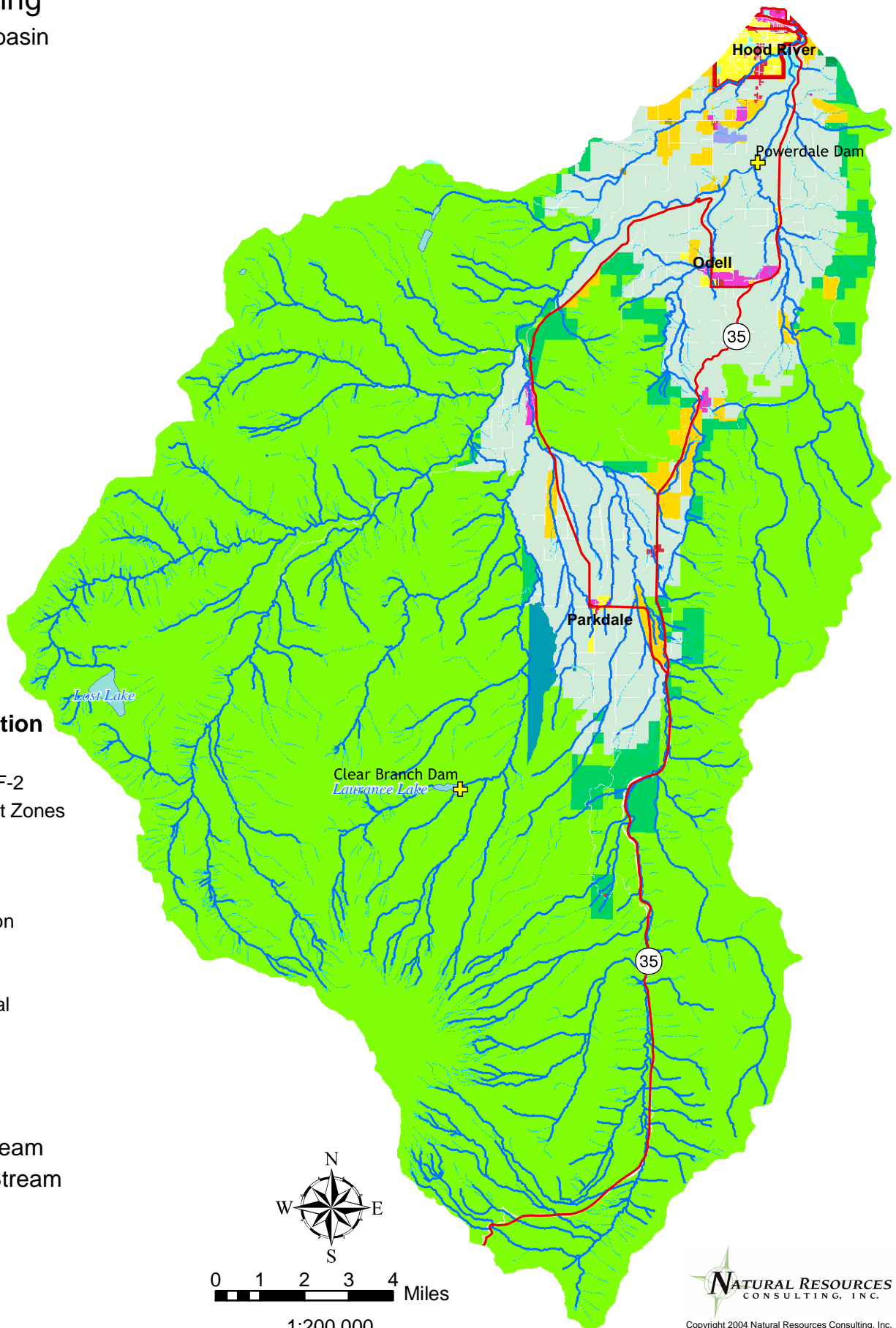

 Copyright 2004 Natural Resources Consulting, Inc.

Data Source: Hood River County

Disclaimer: This map was compiled by Natural Resources Consulting, Inc. (Bend, OR) using a variety of data sources. Data is believed to be accurate; however, a degree of error is inherent in all maps. This map is distributed "AS-IS" without warranties of any kind, either expressed or implied, including but not limited to warranties of suitability to a particular purpose or use. This map is intended for use only at the published scale. Reproduction is prohibited.

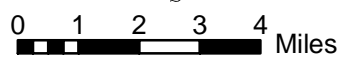
Map 13. Zoning

Hood River Subbasin



Zoning Designation

- Forest F-1
- Primary Forest F-2
- CRGNSA Forest Zones
- Farm
- Open Space
- Natural Area
- Public Recreation
- Public
- Residential
- Rural Residential
- Rural Center
- Commercial
- Industrial
- Airport
- Perennial Stream
- Intermittent Stream
- Waterbody
- Urban Area
- Highway
- Dam



1:200,000



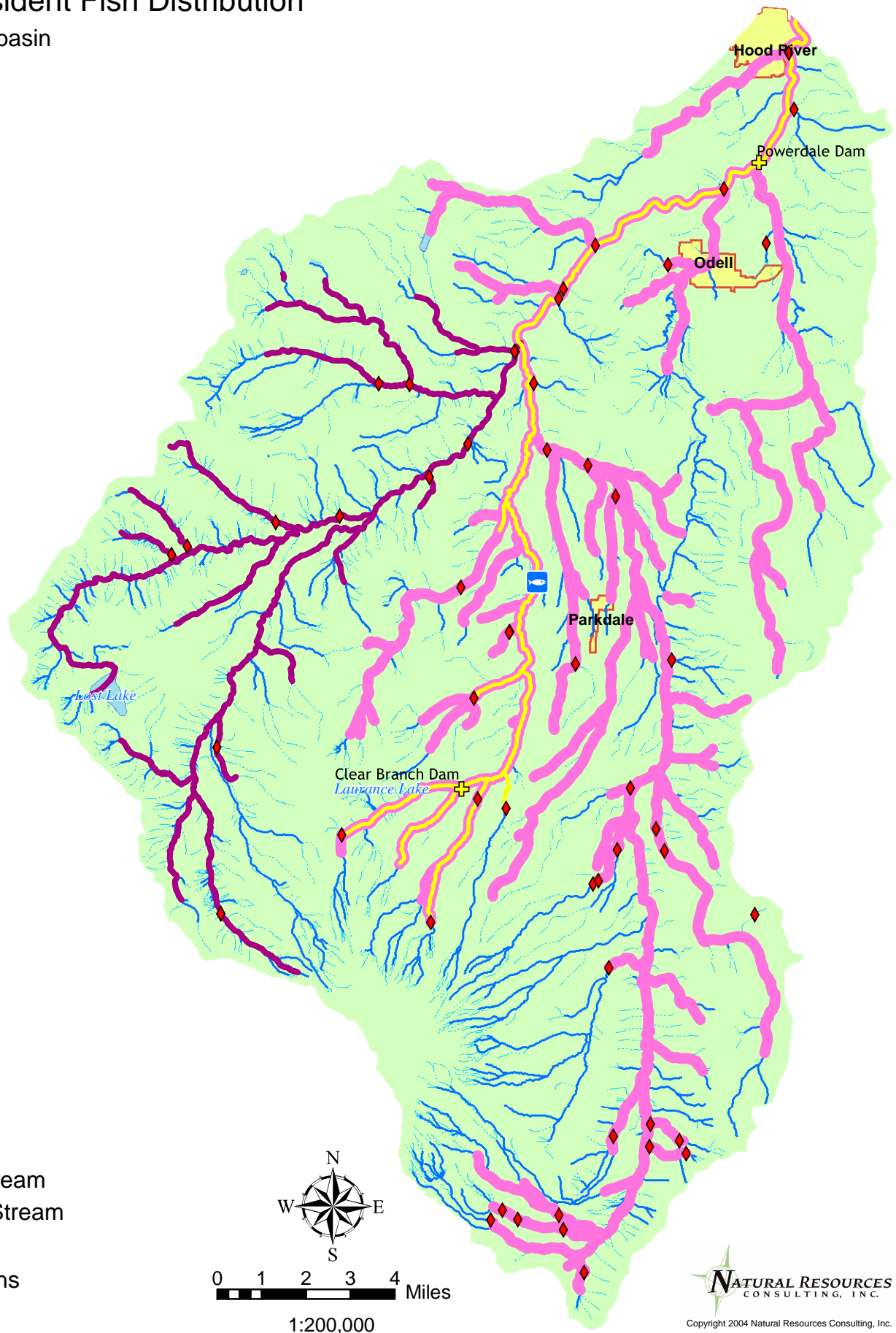
Copyright 2004 Natural Resources Consulting, Inc.

Data Source: Hood River County

Disclaimer: This map was compiled by Natural Resources Consulting, Inc. (Bend, OR) using a variety of data sources. Data is believed to be accurate; however, a degree of error is inherent in all maps. This map is distributed "AS-IS" without warranties of any kind, either expressed or implied, including but not limited to warranties of suitability to a particular purpose or use. This map is intended for use only at the published scale. Reproduction is prohibited.

Map 14. Resident Fish Distribution

Hood River Subbasin



- Yellow line: Bull Trout
- Purple line: Rainbow
- Pink line: Cutthroat
- Red diamond: Barrier
- Blue square with fish: Hatchery
- Blue wavy line: Perennial Stream
- Light blue wavy line: Intermittent Stream
- Blue shape: Waterbody
- Orange square: Cities & Towns
- Yellow square with cross: Dam



0 1 2 3 4 Miles
1:200,000

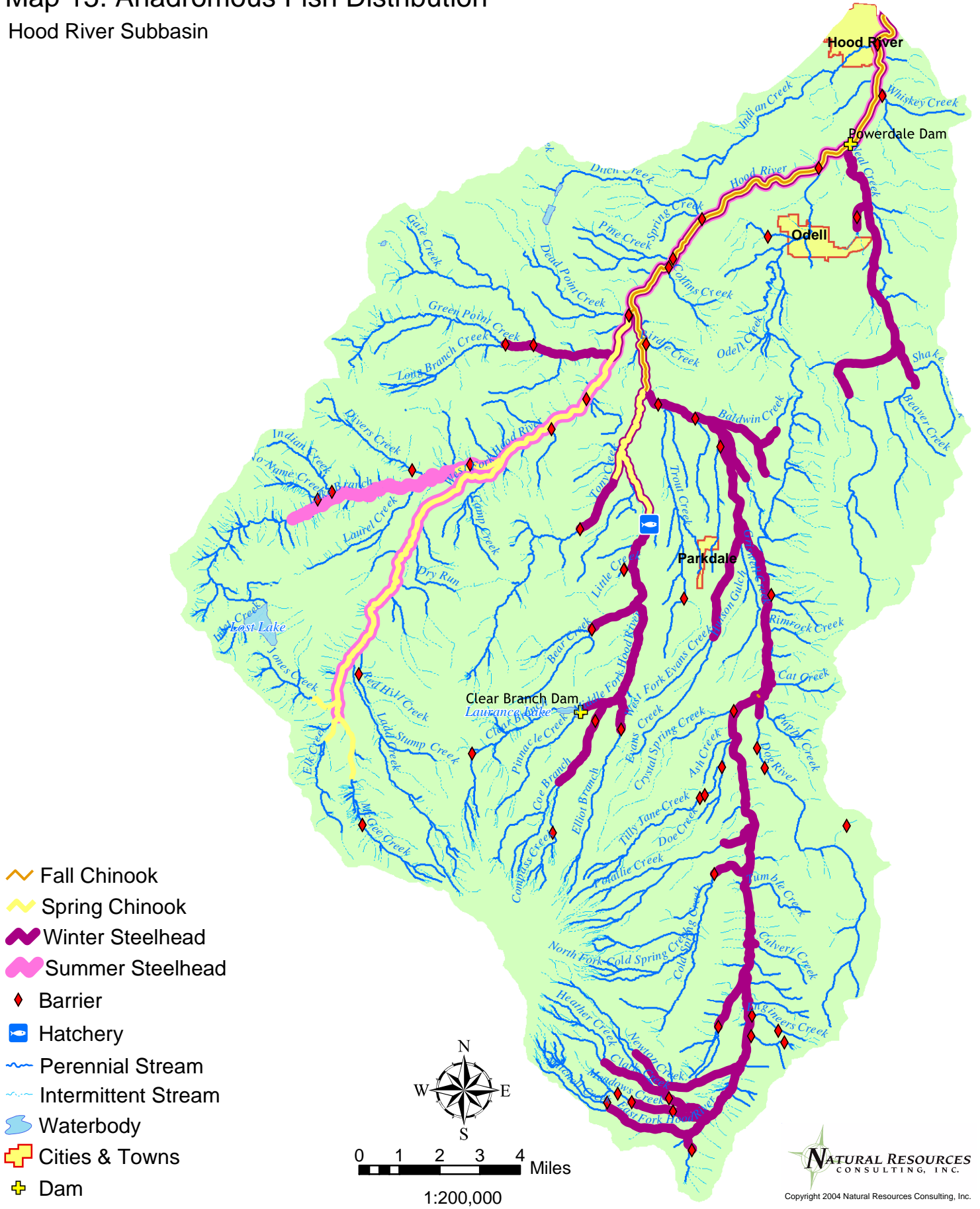
NATURAL RESOURCES
CONSULTING, INC.
Copyright 2004 Natural Resources Consulting, Inc.

Data Source: Oregon Department of Fish and Wildlife, Limited Oregon Trout Habitat Distribution Version 1, Oregon Bull Trout Habitat Distribution Version 12. Some updates based on local professional opinion.

Disclaimer: This map was compiled by Natural Resources Consulting, Inc. (Bend, OR) using a variety of data sources. Data is believed to be accurate; however, a degree of error is inherent in all maps. This map is distributed "AS-IS" without warranties of any kind, either expressed or implied, including but not limited to warranties of suitability to a particular purpose or use. This map is intended for use only at the published scale. Reproduction is prohibited.

Map 15. Anadromous Fish Distribution

Hood River Subbasin



Data Source: Oregon Department of Fish and Wildlife, Oregon Salmon and Steelhead Habitat Distribution Version 12. Some updates based on, local professional opinion.

Copyright 2004 Natural Resources Consulting, Inc.
 Disclaimer: This map was compiled by Natural Resources Consulting, Inc. (Bend, OR) using a variety of data sources. Data is believed to be accurate; however, a degree of error is inherent in all maps. This map is distributed "AS-IS" without warranties of any kind, either expressed or implied, including but not limited to warranties of suitability to a particular purpose or use. This map is intended for use only at the published scale. Reproduction is prohibited.

Map 16. Current Wildlife Habitat and Land Cover Type

Hood River Subbasin

Wildlife Habitats and Associated Focal Species

- Mesic Lowlands Conifer-Hardwood Forest -- NSO, AM
- Westside Oak and Dry Douglas-Fir -- WGS, LS
- Montane Mixed Conifer Forest -- NSO, AM
- Interior Mixed Conifer Forest -- NSO, AM
- Ponderosa Pine Dominant -- WGS, LS
- Subalpine Parkland -- CN
- Alpine Grassland and Shrublands -- CN
- Interior Grasslands -- LS
- Agriculture, Pasture and Mixed Environs
- Urban and Mixed Environs
- Open water - Lakes, Rivers, Streams
- Herbaceous Wetlands
- Montane Coniferous Wetlands

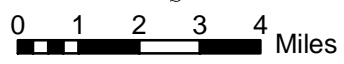
FOCAL SPECIES

- WGS = Western Grey Squirrel
- NSO = Northern Spotted Owl
- AM = American Marten
- CN = Clark's Nutcracker
- LS = Lark Sparrow

Not Mapped

- Harlequin Duck
- Black Tailed Deer
- Elk

- Perennial Stream
- Intermittent Stream
- Waterbody
- Urban Area
- Highway
- Dam



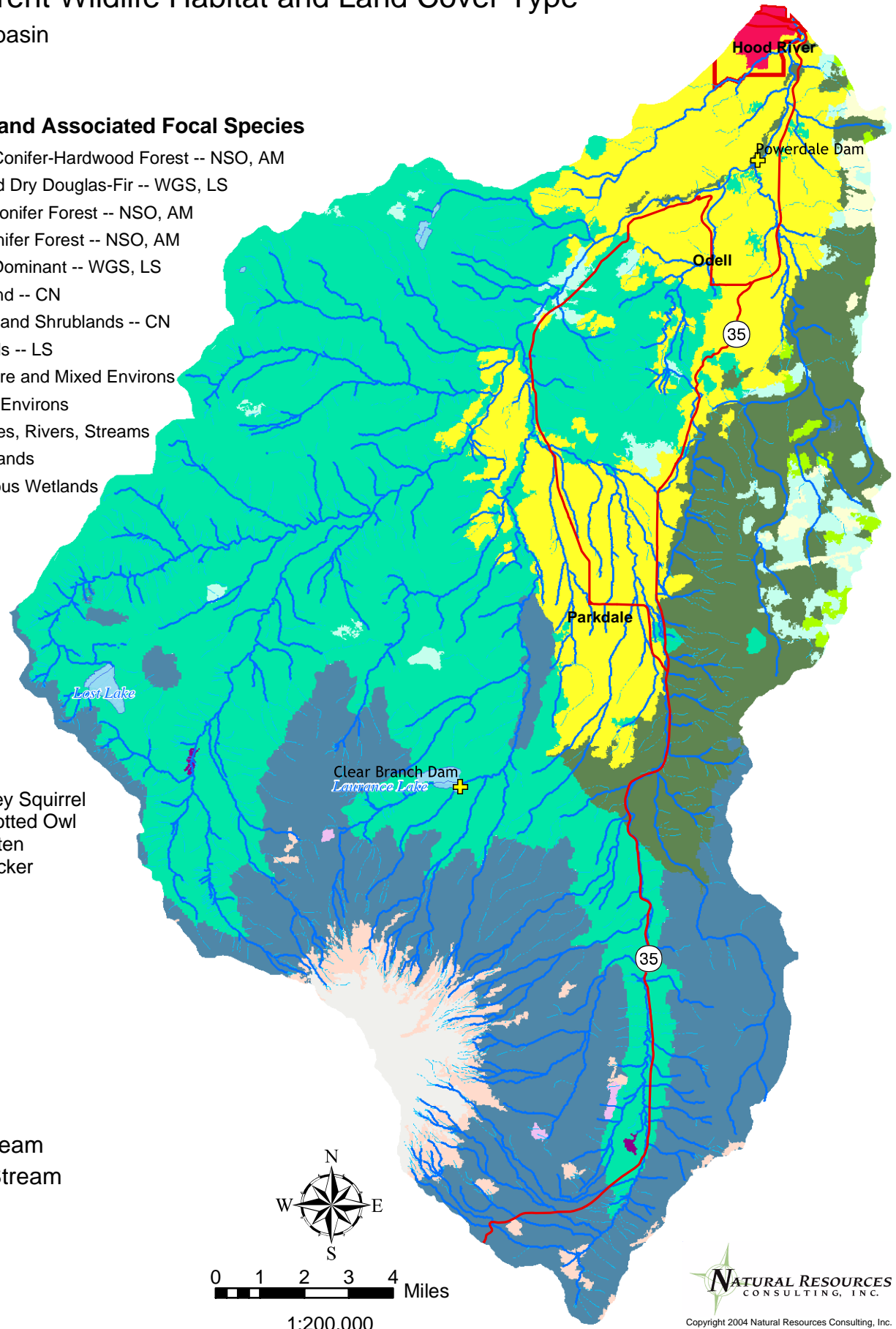
1:200,000



Copyright 2004 Natural Resources Consulting, Inc.

Data Source: IBIS. 2003. Interactive Biodiversity Information System (<http://ibis.nwhi.org>), Northwest Habitat Institute, Corvallis, OR. and Northwest Power and Conservation Council

Disclaimer: This map was compiled by Natural Resources Consulting, Inc. (Bend, OR) using a variety of data sources. Data is believed to be accurate; however, a degree of error is inherent in all maps. This map is distributed "AS-IS" without warranties of any kind, either expressed or implied, including but not limited to warranties of suitability to a particular purpose or use. This map is intended for use only at the published scale. Reproduction is prohibited.



Map 16 A. Historic Wildlife Habitat and Land Cover Type

Hood River Subbasin

Historic Wildlife Habitats and Associated Focal Species

-  Mesic Lowlands Conifer-Hardwood Forest -- NSO, AM
-  Montane Mixed Conifer Forest -- NSO, AM
-  Interior Mixed Conifer Forest -- NSO, AM
-  Lodgepole Pine Dominant
-  Ponderosa Pine Dominant -- WGS, LS
-  Alpine Grassland and Shrublands -- CN
-  Open water - Lakes, Rivers, Streams







FOCAL SPECIES

- WGS = Western Grey Squirrel
- NSO = Northern Spotted Owl
- AM = American Marten
- CN = Clark's Nutcracker
- LS = Lark Sparrow

Not Mapped

- Harlequin Duck
- Black Tailed Deer
- Elk

NOTE: This dataset was developed at a 1:1,000,000 scale with a 1 kilometer cell size. Local planners consider this dataset to be too coarse to fully represent actual historic conditions at the subbasin or watershed scale.

-  Perennial Stream
-  Intermittent Stream
-  Waterbody
-  Urban Area
-  Highway
-  Dam



0 1 2 3 4 Miles

1:200,000



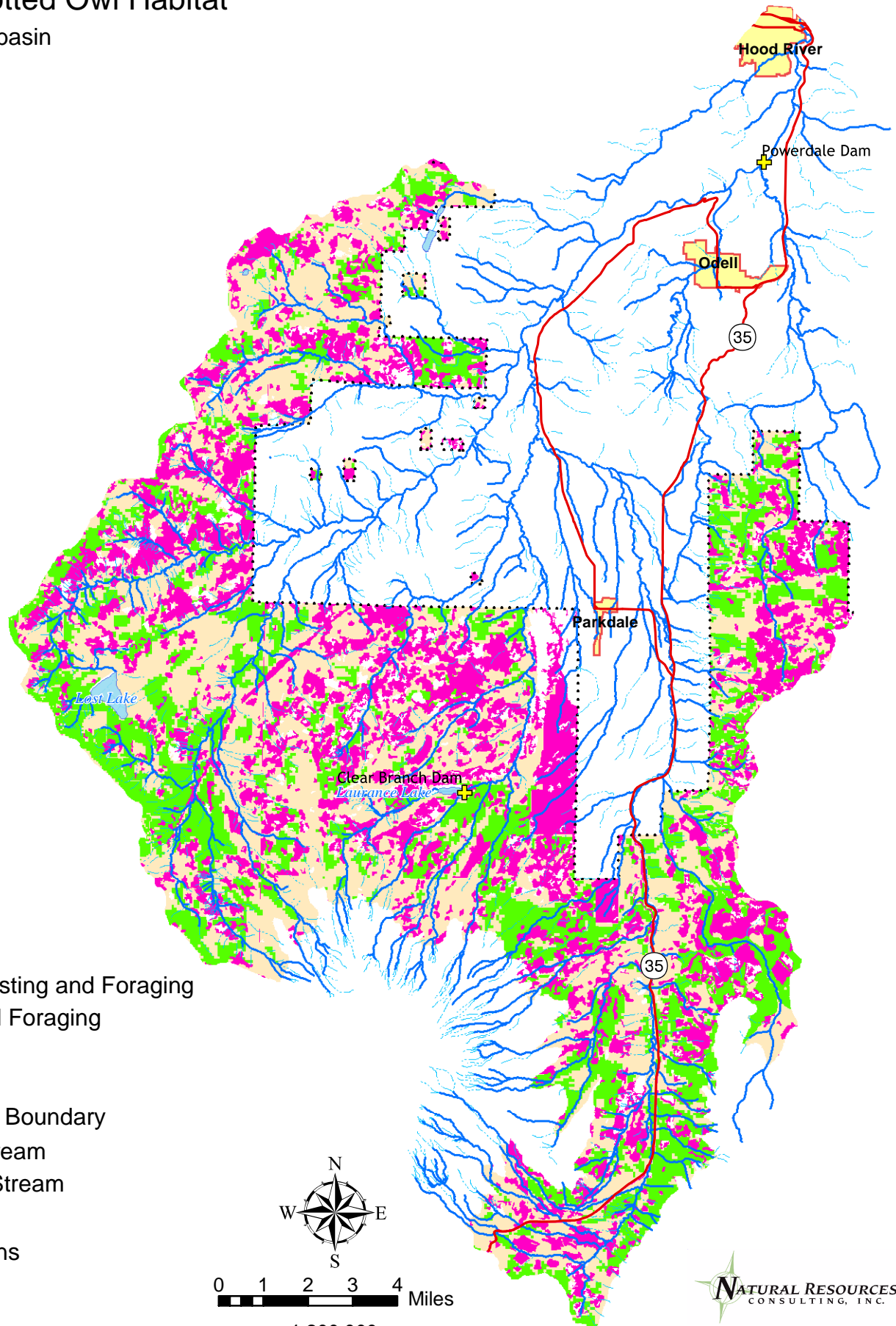
Copyright 2004 Natural Resources Consulting, Inc.

Data Source: IBIS. 2003. Interactive Biodiversity Information System (<http://ibis.nwhi.org>), Northwest Habitat Institute, Corvallis, OR. and Northwest Power and Conservation Council

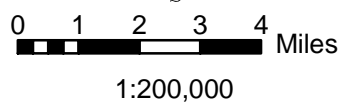
Disclaimer: This map was compiled by Natural Resources Consulting, Inc. (Bend, OR) using a variety of data sources. Data is believed to be accurate; however, a degree of error is inherent in all maps. This map is distributed "AS-IS" without warranties of any kind, either expressed or implied, including but not limited to warranties of suitability to a particular purpose or use. This map is intended for use only at the published scale. Reproduction is prohibited.

Map 17. Spotted Owl Habitat

Hood River Subbasin



- Nesting, Roosting and Foraging
- Roosting and Foraging
- Dispersal
- NO DATA
- Mt. Hood NF Boundary
- Perennial Stream
- Intermittent Stream
- Waterbody
- Cities & Towns
- Highway
- Dam



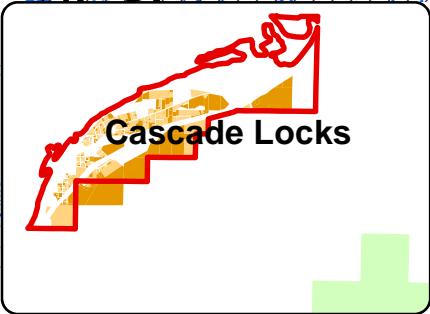
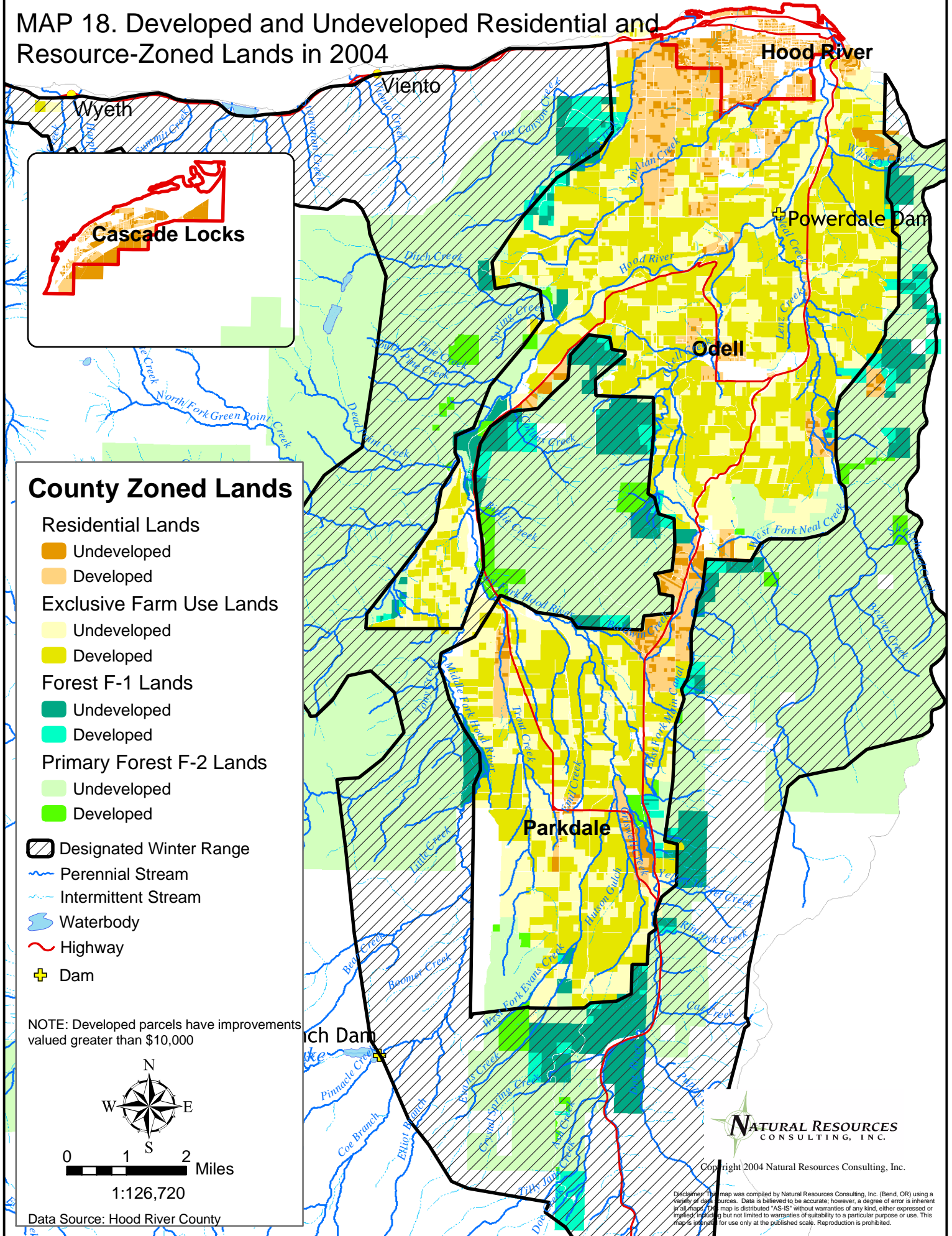
NATURAL RESOURCES
CONSULTING, INC.

Copyright 2004 Natural Resources Consulting, Inc.

Data Source: Mt. Hood National Forest

Disclaimer: This map was compiled by Natural Resources Consulting, Inc. (Bend, OR) using a variety of data sources. Data is believed to be accurate; however, a degree of error is inherent in all maps. This map is distributed "AS-IS" without warranties of any kind, either expressed or implied, including but not limited to warranties of suitability to a particular purpose or use. This map is intended for use only at the published scale. Reproduction is prohibited.

MAP 18. Developed and Undeveloped Residential and Resource-Zoned Lands in 2004



County Zoned Lands

- Residential Lands
 - Undeveloped
 - Developed
- Exclusive Farm Use Lands
 - Undeveloped
 - Developed
- Forest F-1 Lands
 - Undeveloped
 - Developed
- Primary Forest F-2 Lands
 - Undeveloped
 - Developed
- Designated Winter Range
- Perennial Stream
- Intermittent Stream
- Waterbody
- Highway
- Dam

NOTE: Developed parcels have improvements valued greater than \$10,000



0 1 2 Miles

1:126,720

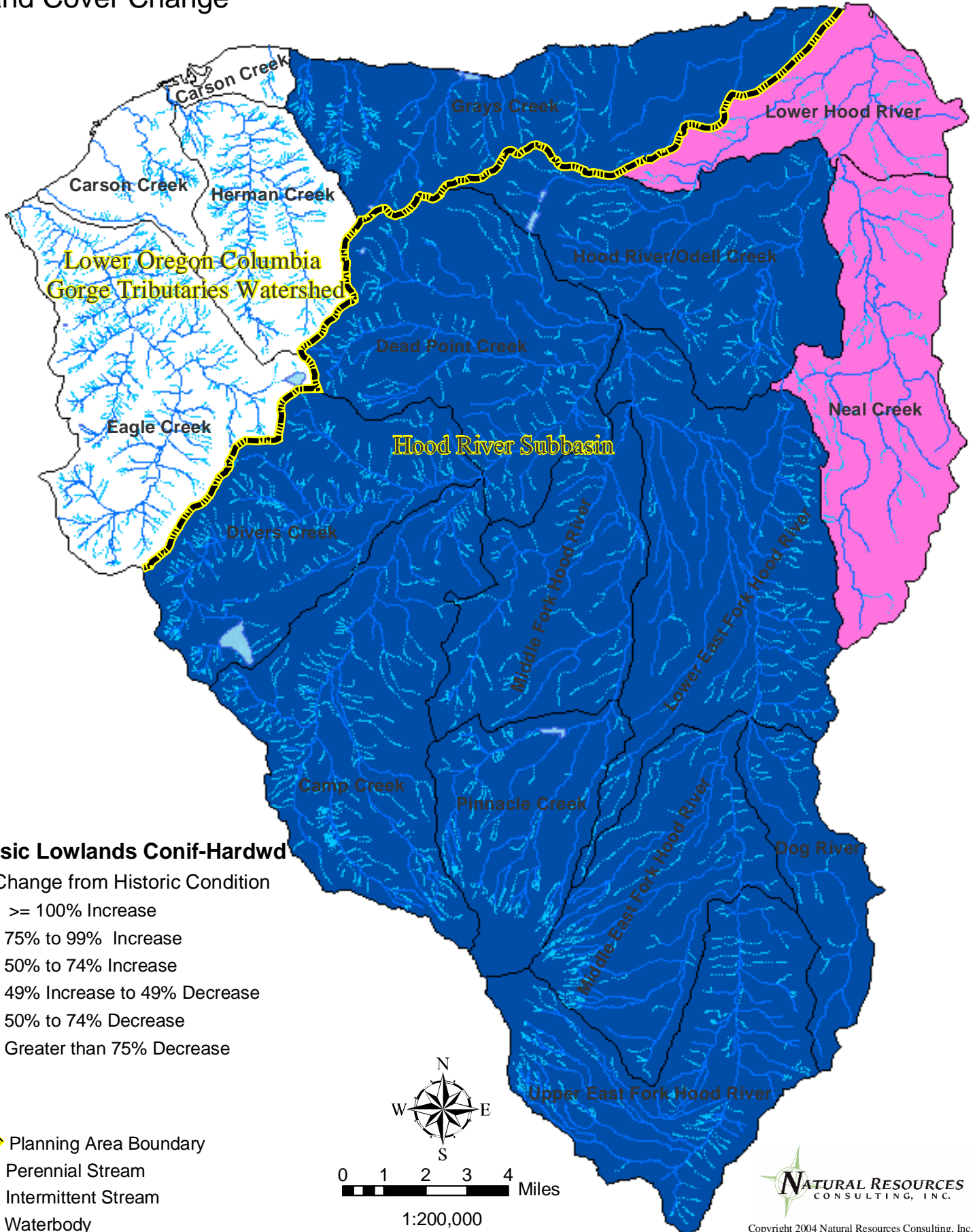
Data Source: Hood River County

NATURAL RESOURCES CONSULTING, INC.

Copyright 2004 Natural Resources Consulting, Inc.

Disclaimer: This map was compiled by Natural Resources Consulting, Inc. (Bend, OR) using a variety of data sources. Data is believed to be accurate; however, a degree of error is inherent in all maps. This map is distributed "AS-IS" without warranties of any kind, either expressed or implied, including but not limited to warranties of suitability to a particular purpose or use. This map is prepared for use only at the published scale. Reproduction is prohibited.

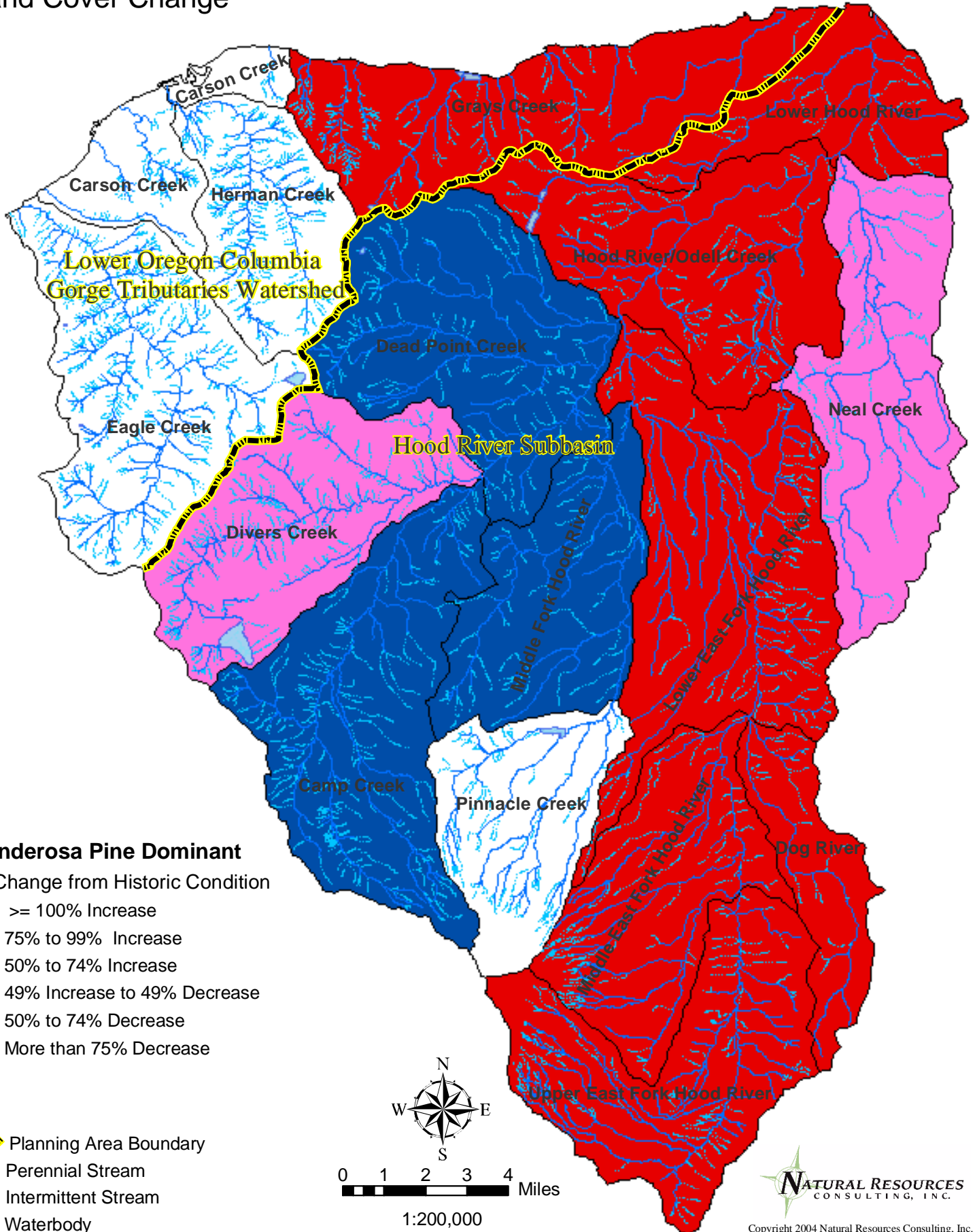
Land Cover Change



Data Source: IBIS. 2003. Interactive Biodiversity Information System (<http://ibis.nwhi.org>), Northwest Habitat Institute, Corvallis, OR. and Northwest Power and Conservation Council

Disclaimer: This map was compiled by Natural Resources Consulting, Inc. (Bend, OR) using a variety of data sources. Data is believed to be accurate; however, a degree of error is inherent in all maps. This map is distributed "AS-IS" without warranties of any kind, either expressed or implied, including but not limited to warranties of suitability to a particular purpose or use. This map is intended for use only at the published scale. Reproduction is prohibited.

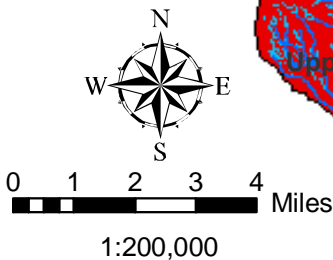
Land Cover Change



Ponderosa Pine Dominant
 % Change from Historic Condition

- >= 100% Increase
- 75% to 99% Increase
- 50% to 74% Increase
- 49% Increase to 49% Decrease
- 50% to 74% Decrease
- More than 75% Decrease

- Planning Area Boundary
- Perennial Stream
- Intermittent Stream
- Waterbody

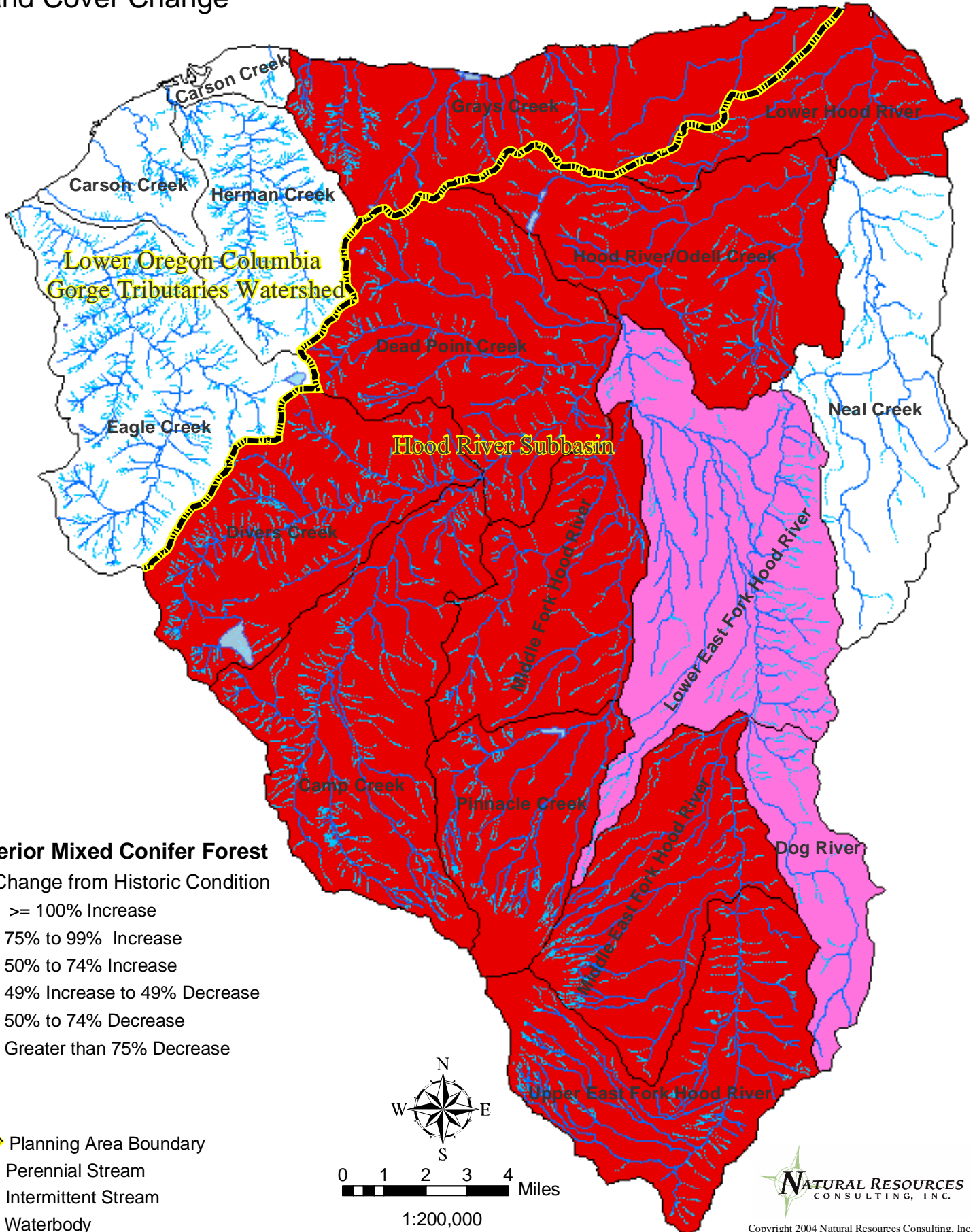



NATURAL RESOURCES
 CONSULTING, INC.
 Copyright 2004 Natural Resources Consulting, Inc.

Data Source: IBIS. 2003. Interactive Biodiversity Information System (<http://ibis.nwhi.org>), Northwest Habitat Institute, Corvallis, OR. and Northwest Power and Conservation Council

Disclaimer: This map was compiled by Natural Resources Consulting, Inc. (Bend, OR) using a variety of data sources. Data is believed to be accurate; however, a degree of error is inherent in all maps. This map is distributed "AS-IS" without warranties of any kind, either expressed or implied, including but not limited to warranties of suitability to a particular purpose or use. This map is intended for use only at the published scale. Reproduction is prohibited.

Land Cover Change



Interior Mixed Conifer Forest

% Change from Historic Condition

- >= 100% Increase
- 75% to 99% Increase
- 50% to 74% Increase
- 49% Increase to 49% Decrease
- 50% to 74% Decrease
- Greater than 75% Decrease

Planning Area Boundary

Perennial Stream

Intermittent Stream

Waterbody



0 1 2 3 4 Miles

1:200,000

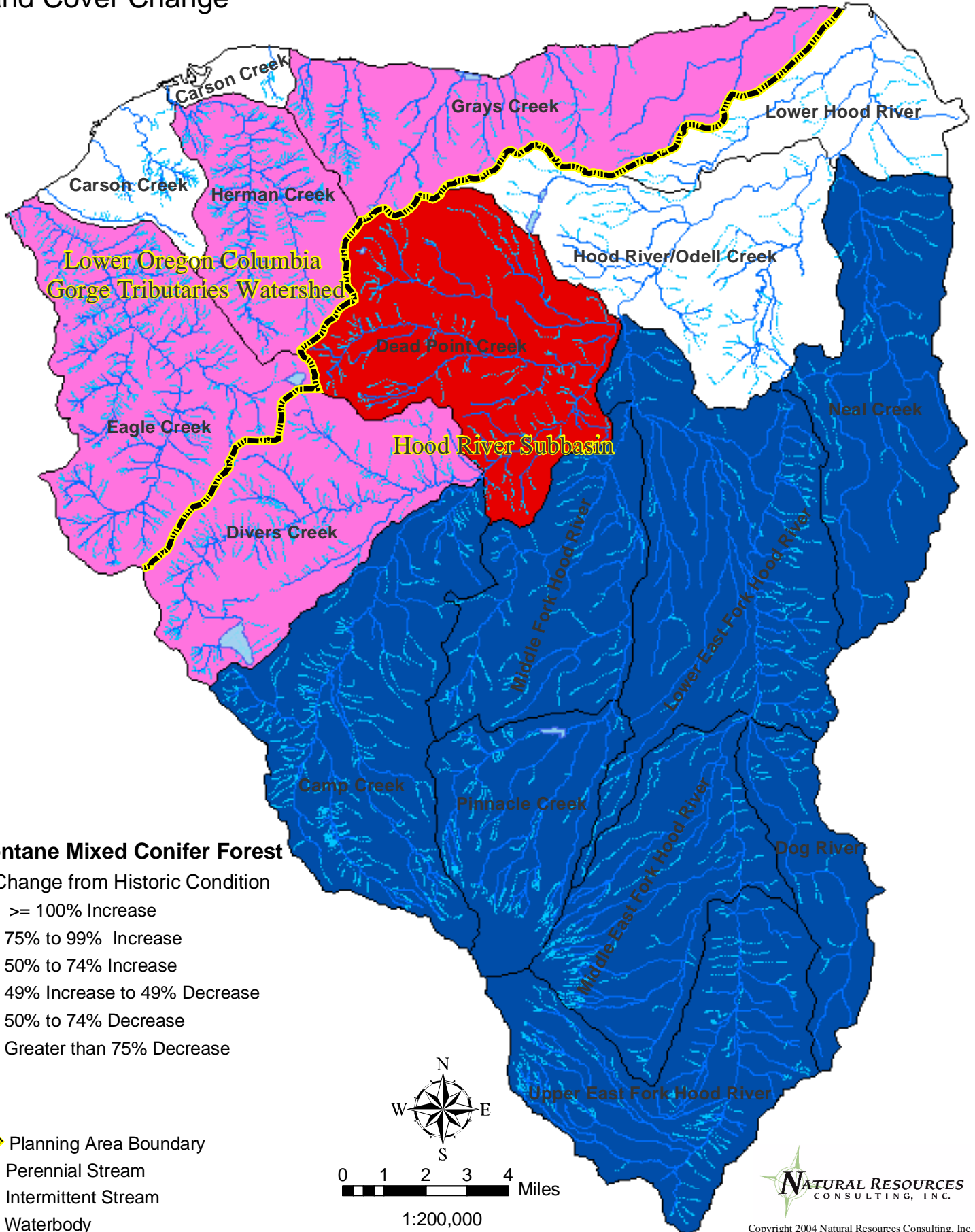


Copyright 2004 Natural Resources Consulting, Inc.

Data Source: IBIS. 2003. Interactive Biodiversity Information System (<http://ibis.nwhi.org>), Northwest Habitat Institute, Corvallis, OR. and Northwest Power and Conservation Council

Disclaimer: This map was compiled by Natural Resources Consulting, Inc. (Bend, OR) using a variety of data sources. Data is believed to be accurate; however, a degree of error is inherent in all maps. This map is distributed "AS-IS" without warranties of any kind, either expressed or implied, including but not limited to warranties of suitability to a particular purpose or use. This map is intended for use only at the published scale. Reproduction is prohibited.

Land Cover Change



Montane Mixed Conifer Forest

% Change from Historic Condition

- \geq 100% Increase
- 75% to 99% Increase
- 50% to 74% Increase
- 49% Increase to 49% Decrease
- 50% to 74% Decrease
- Greater than 75% Decrease

Planning Area Boundary

Perennial Stream

Intermittent Stream

Waterbody



0 1 2 3 4 Miles

1:200,000



Copyright 2004 Natural Resources Consulting, Inc.

Data Source: IBIS. 2003. Interactive Biodiversity Information System (<http://ibis.nwhi.org>), Northwest Habitat Institute, Corvallis, OR. and Northwest Power and Conservation Council

Disclaimer: This map was compiled by Natural Resources Consulting, Inc. (Bend, OR) using a variety of data sources. Data is believed to be accurate; however, a degree of error is inherent in all maps. This map is distributed "AS-IS" without warranties of any kind, either expressed or implied, including but not limited to warranties of suitability to a particular purpose or use. This map is intended for use only at the published scale. Reproduction is prohibited.