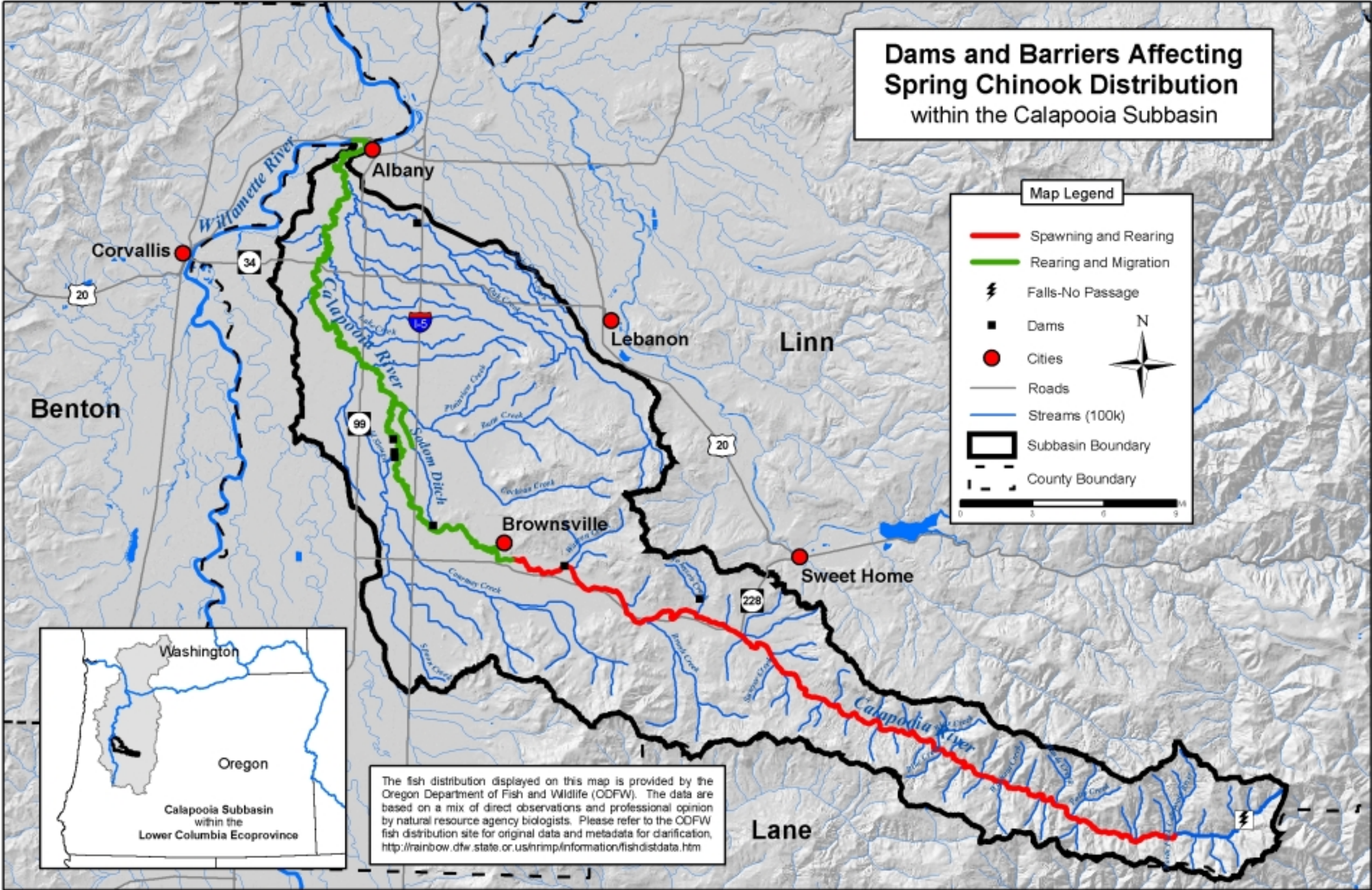


# Salmon Barriers

# Dams and Barriers Affecting Spring Chinook Distribution within the Calapooia Subbasin



### Map Legend

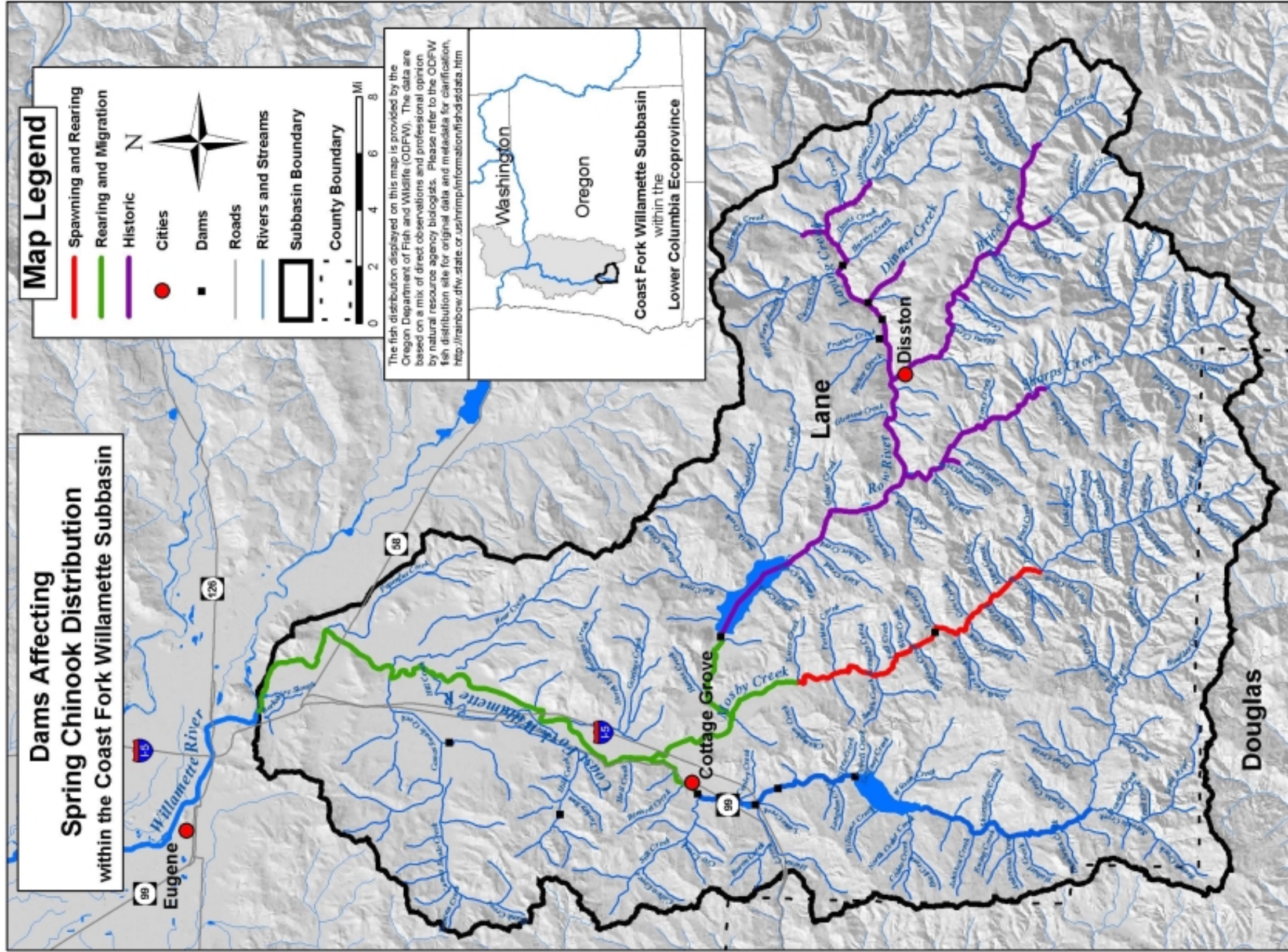
- Spawning and Rearing
- Rearing and Migration
- Falls-No Passage
- Dams
- Cities
- Roads
- Streams (100k)
- Subbasin Boundary
- County Boundary



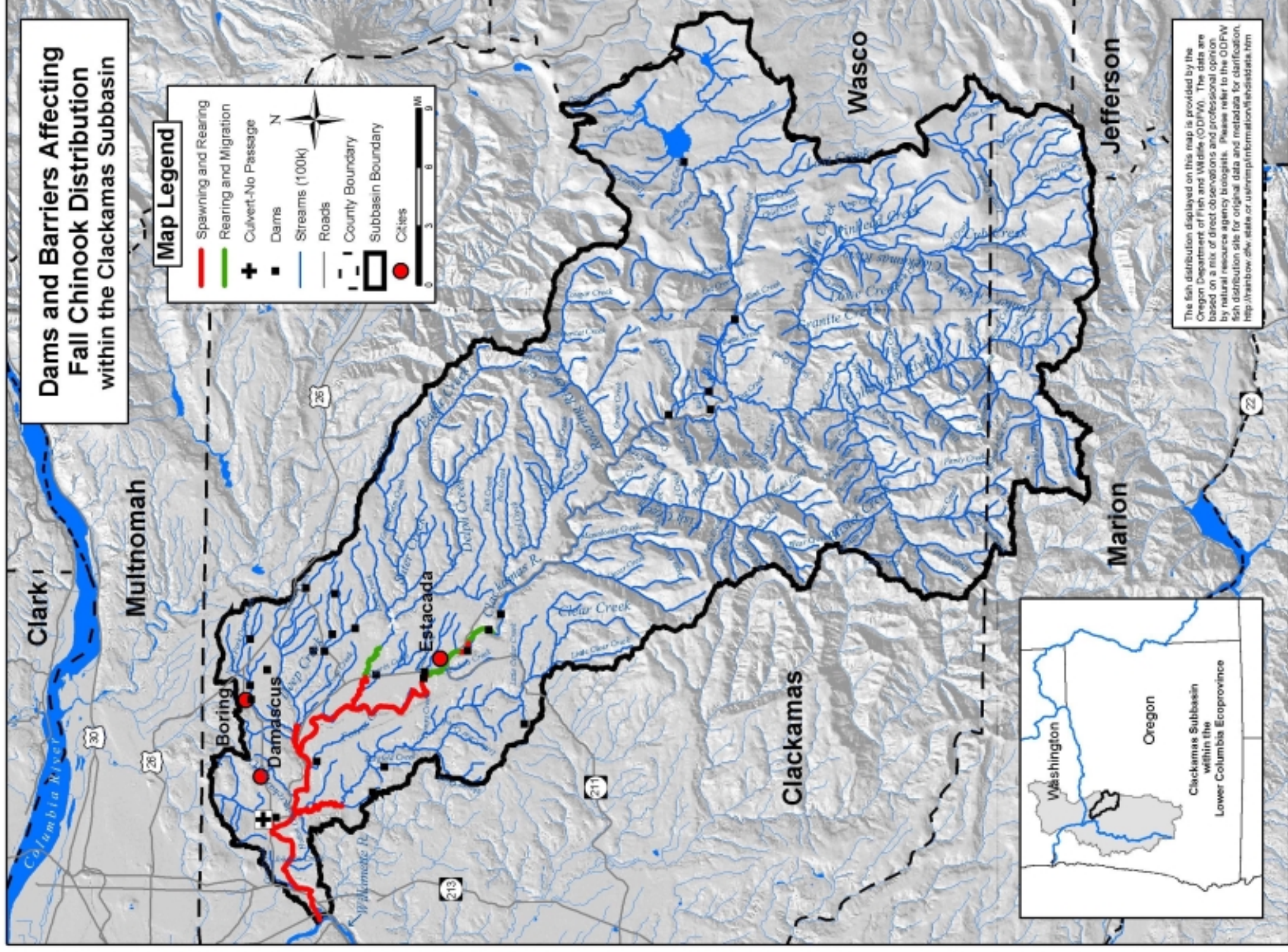
The fish distribution displayed on this map is provided by the Oregon Department of Fish and Wildlife (ODFW). The data are based on a mix of direct observations and professional opinion by natural resource agency biologists. Please refer to the ODFW fish distribution site for original data and metadata for clarification, <http://rainbow.dfw.state.or.us/nrmp/information/fishdistdata.htm>

Lane









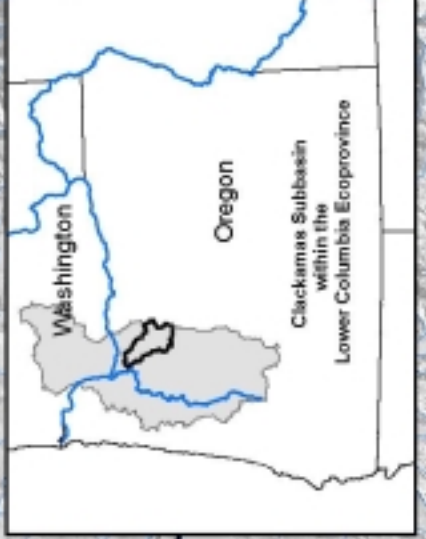
**Dams and Barriers Affecting Fall Chinook Distribution within the Clackamas Subbasin**

**Map Legend**

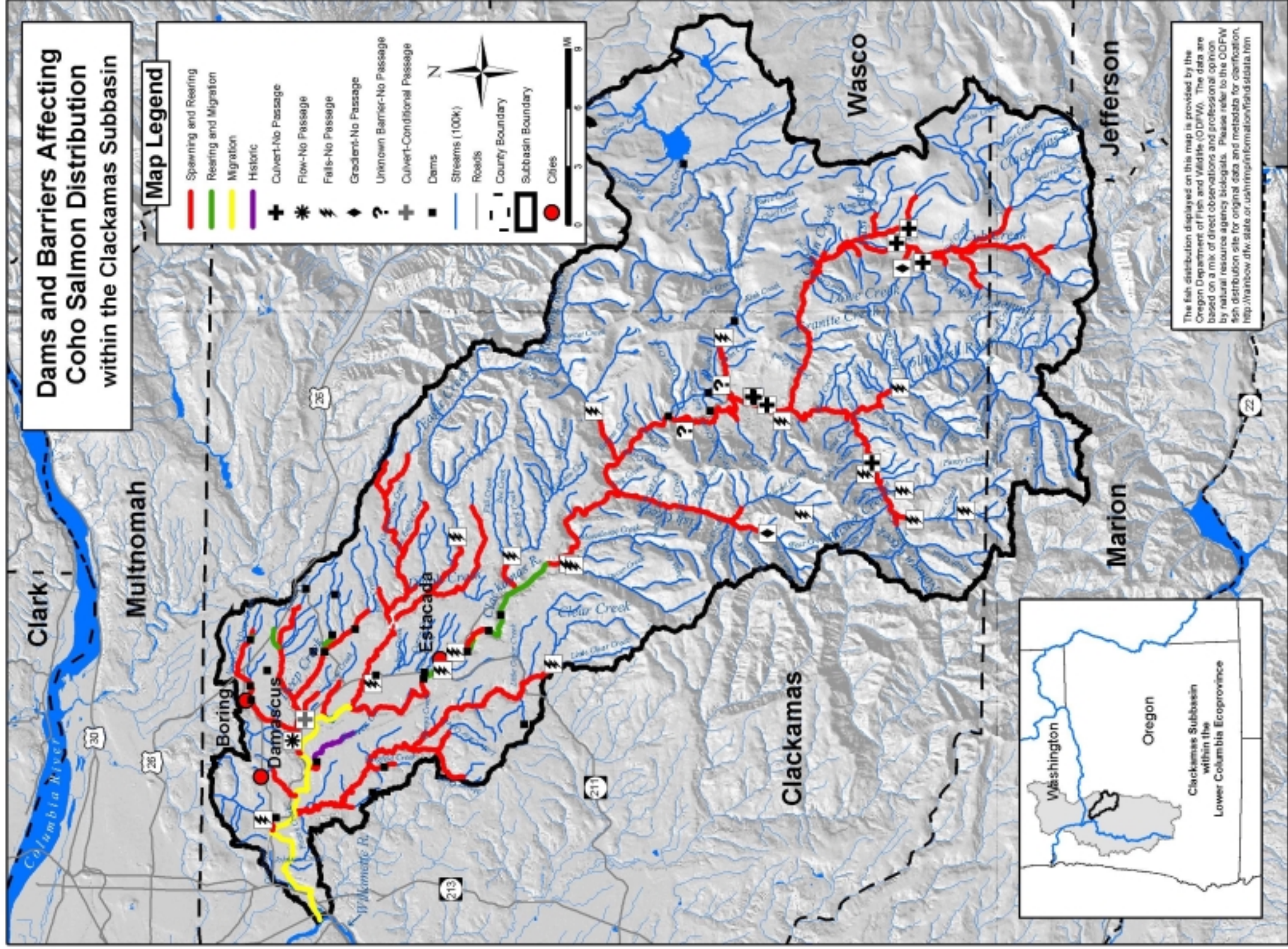
- Spawning and Rearing
- Rearing and Migration
- + Culvert-No Passage
- Dams
- Streams (100k)
- Roads
- County Boundary
- Subbasin Boundary
- Cities

Scale: 0 3 6 9 Miles

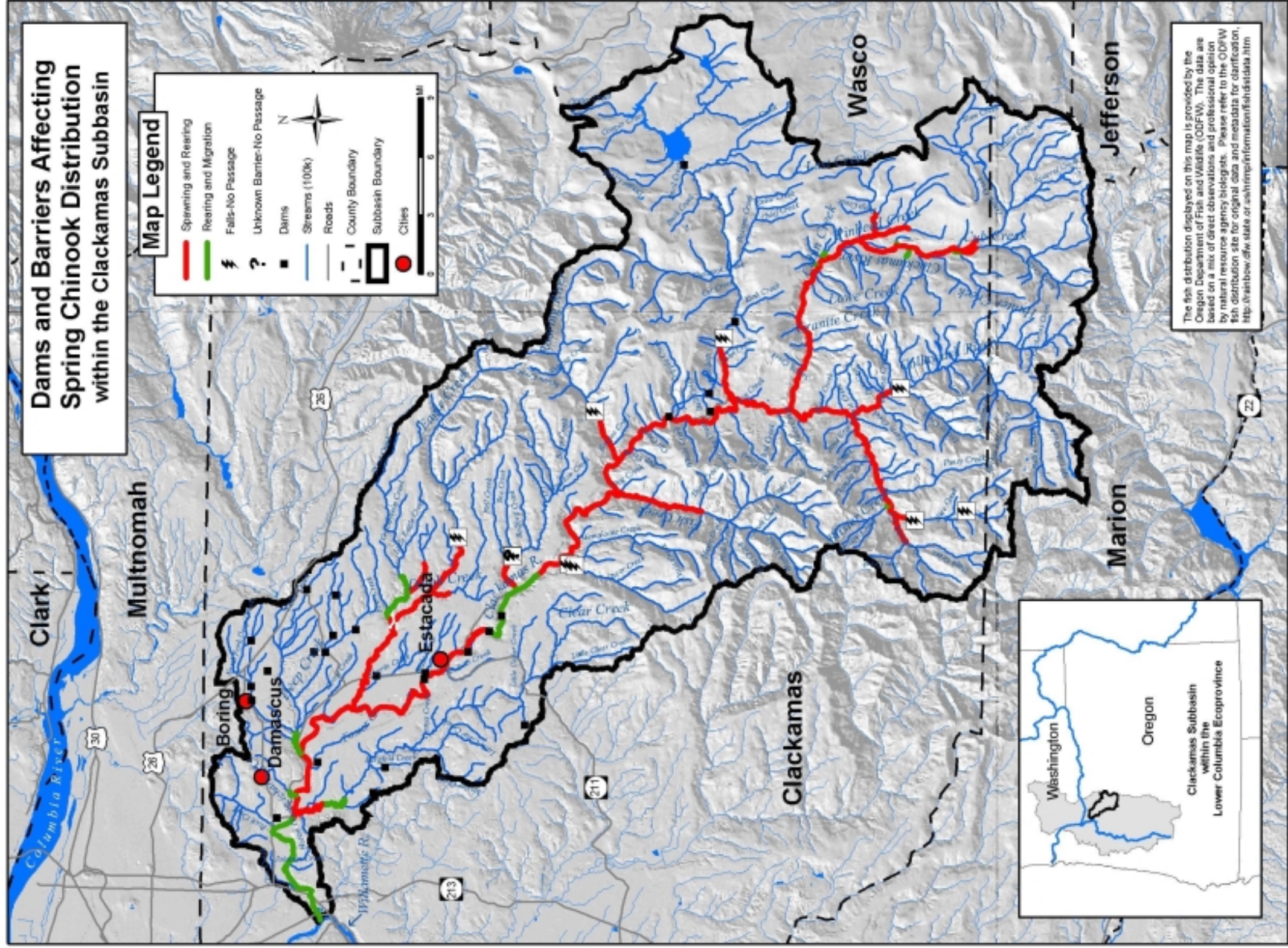
The fish distribution displayed on this map is provided by the Oregon Department of Fish and Wildlife (ODFW). The data are based on a mix of direct observations and professional opinion by natural resource agency biologists. Please refer to the ODFW fish distribution site for original data and metadata for clarification. <http://rainbow.ohw.state.or.us/information/fishdist.htm>





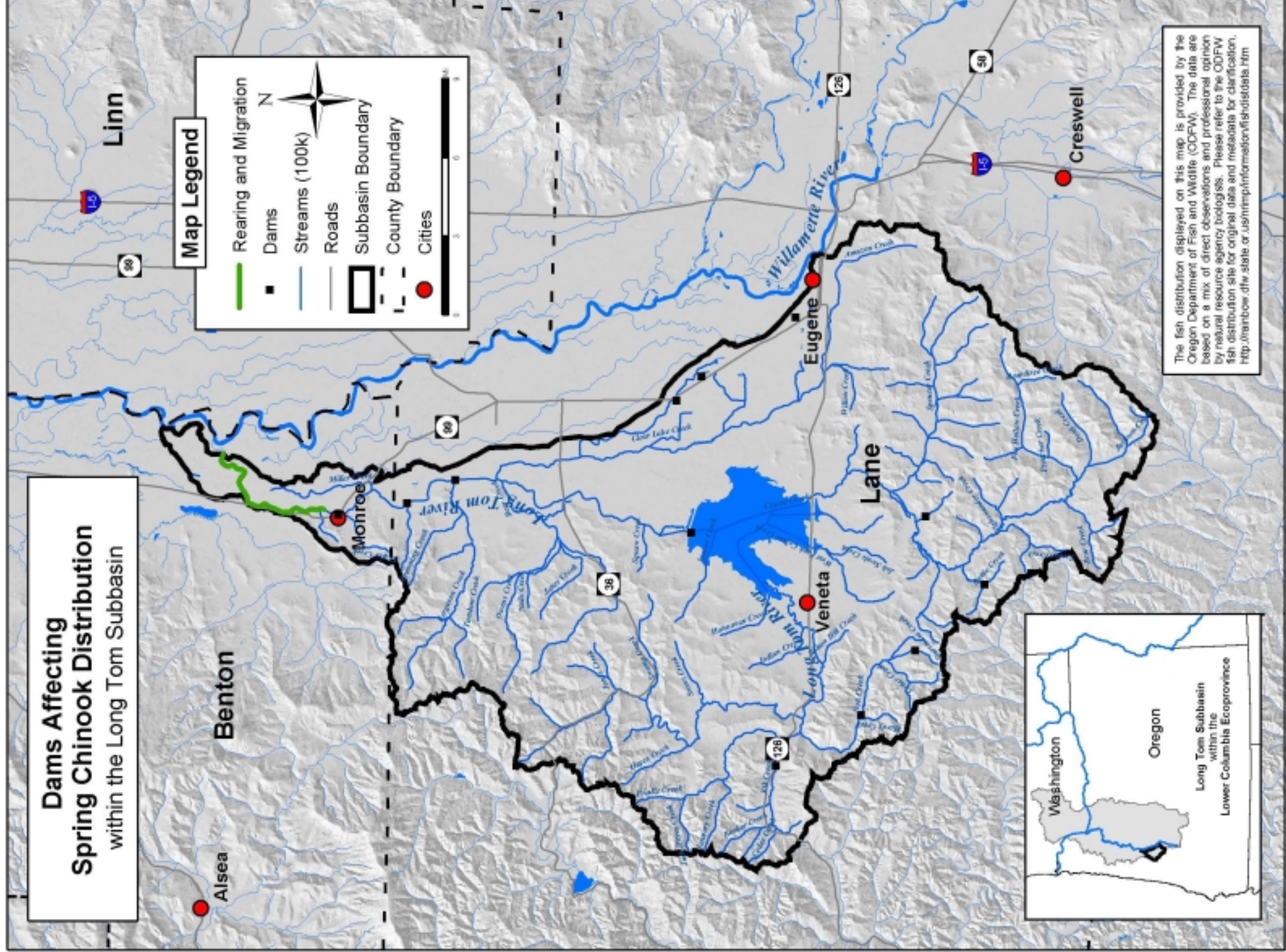






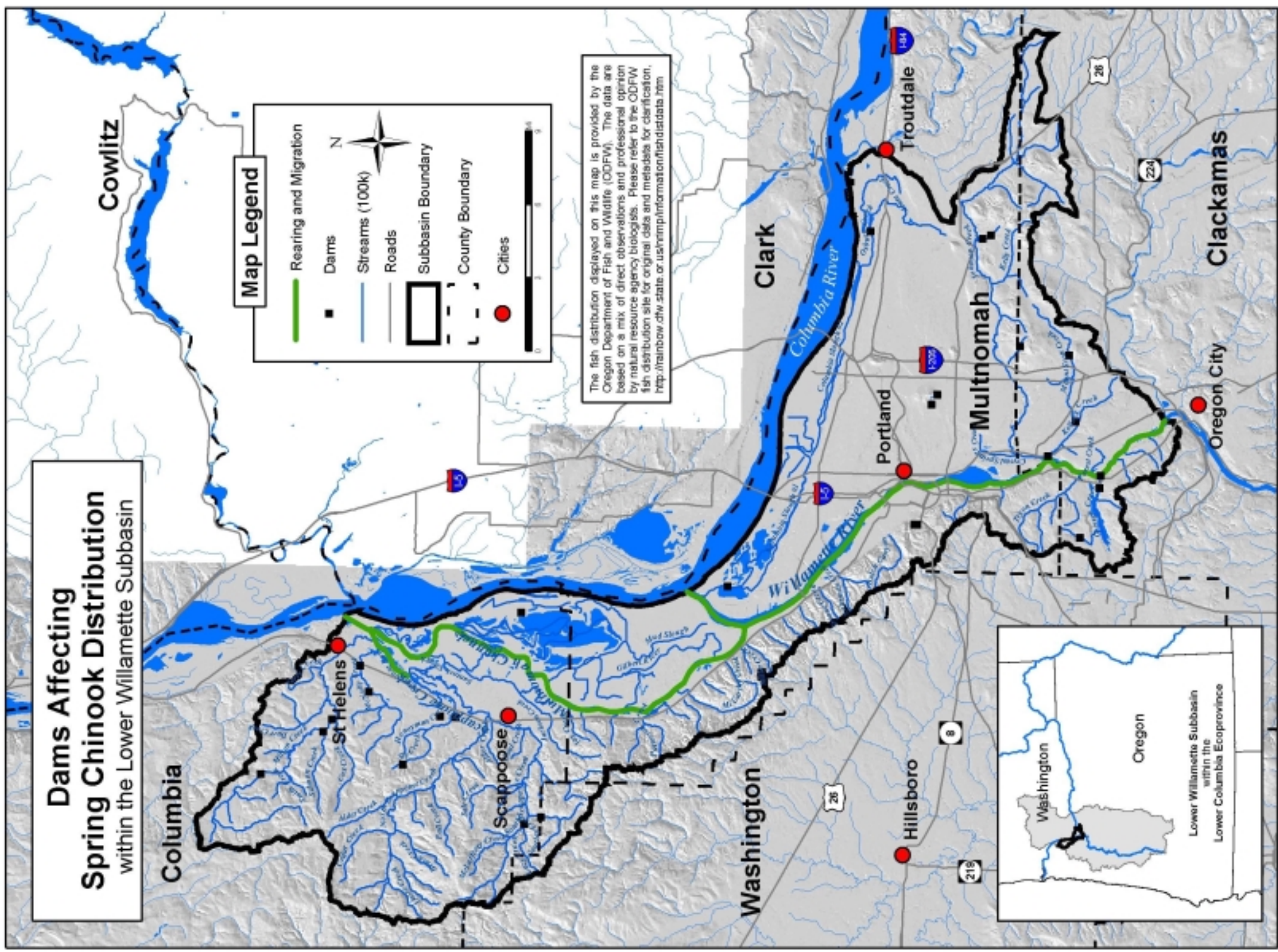


**Dams Affecting  
Spring Chinook Distribution**  
within the Long Tom Subbasin



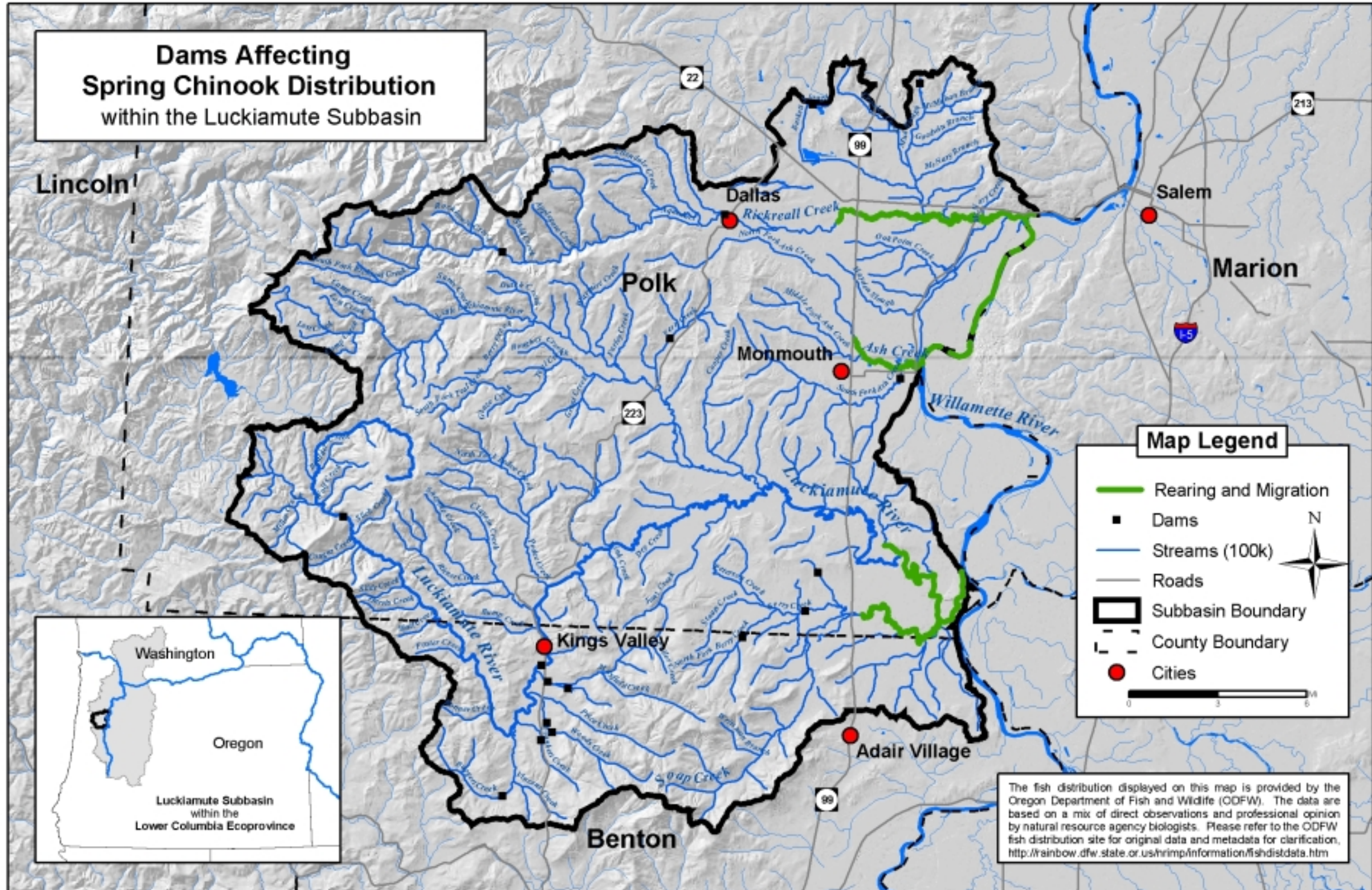
The fish distribution displayed on this map is provided by the Oregon Department of Fish and Wildlife (ODFW). The data are based on a mix of direct observations and professional opinion by natural resource agency biologists. Please refer to the ODFW fish distribution site for original data and metadata for clarification. <http://nrm.bow.dfw.state.or.us/nrm/information/fish/distats.htm>







**Dams Affecting  
Spring Chinook Distribution  
within the Luckiamute Subbasin**

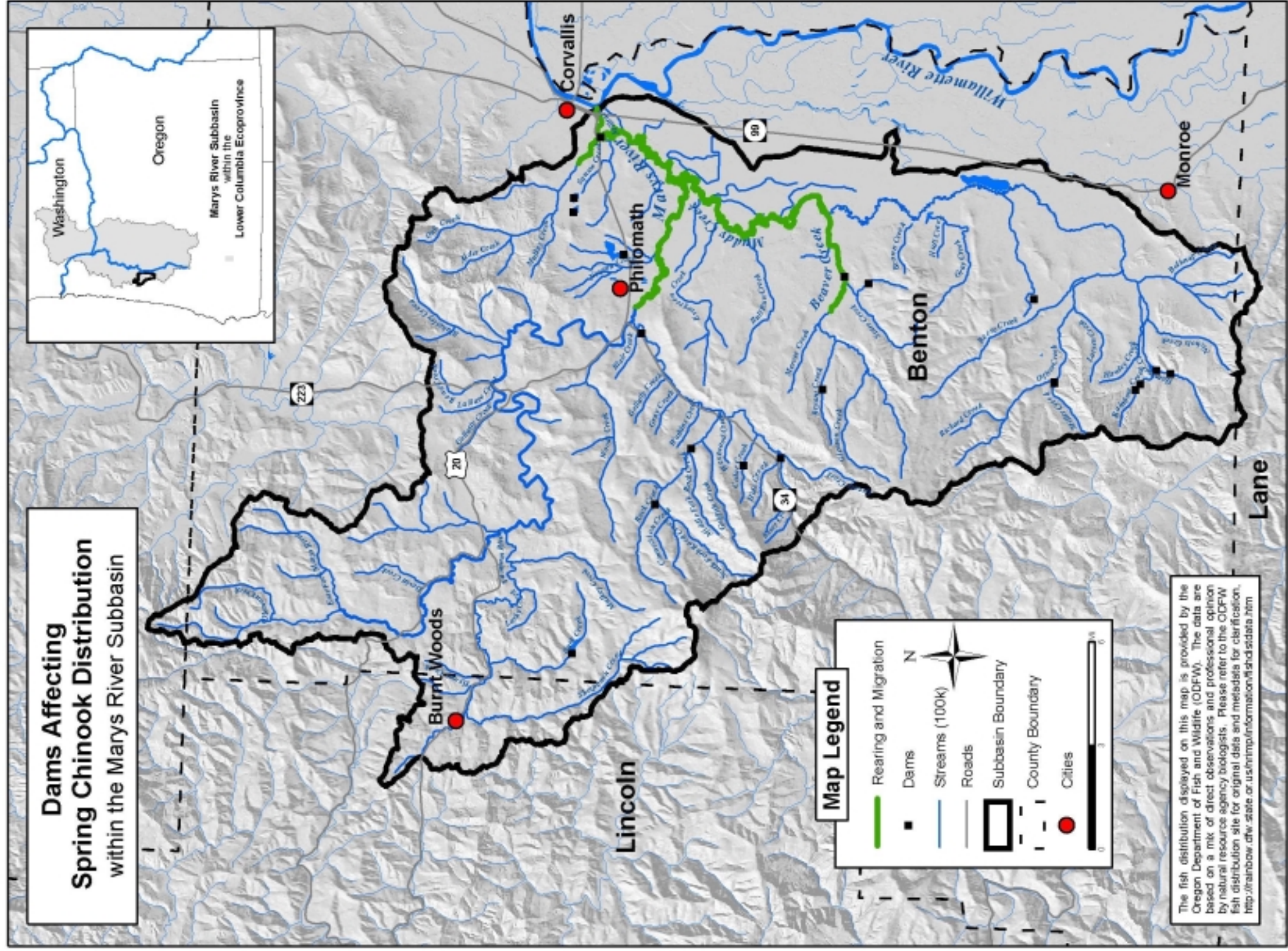


**Map Legend**

- Rearing and Migration
- Dams
- (thick blue) Streams (100k)
- (grey) Roads
- ▭ (black outline) Subbasin Boundary
- - - (dashed) County Boundary
- (red) Cities

The fish distribution displayed on this map is provided by the Oregon Department of Fish and Wildlife (ODFW). The data are based on a mix of direct observations and professional opinion by natural resource agency biologists. Please refer to the ODFW fish distribution site for original data and metadata for clarification, <http://rainbow.dfw.state.or.us/rimp/information/fishdistdata.htm>







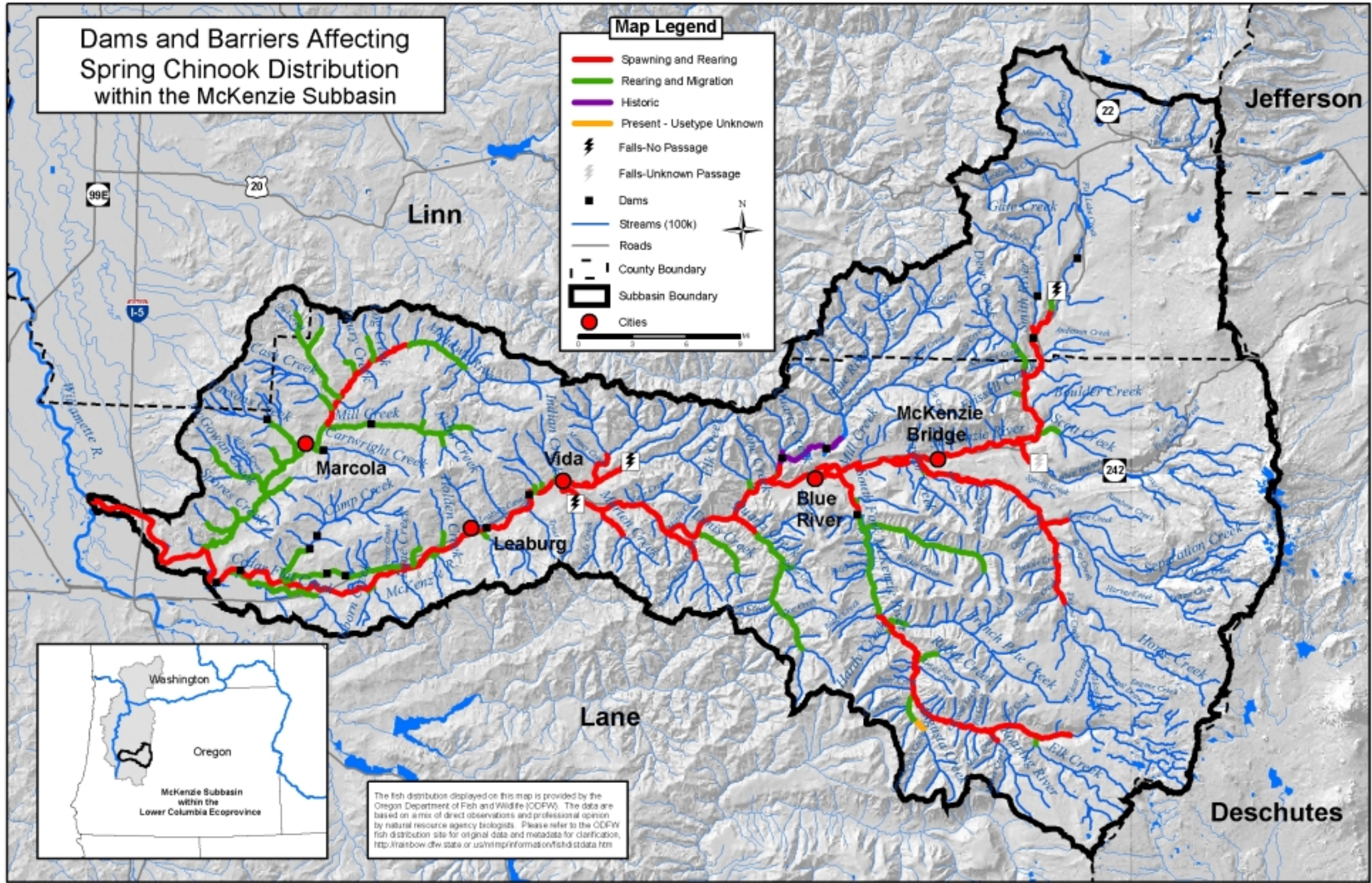
# Dams and Barriers Affecting Spring Chinook Distribution within the McKenzie Subbasin

**Map Legend**

- Spawning and Rearing
- Rearing and Migration
- Historic
- Present - Usetype Unknown
- Falls-No Passage
- Falls-Unknown Passage
- Dams
- Streams (100k)
- Roads
- County Boundary
- Subbasin Boundary
- Cities

Scale: 0 3 6 9 Miles

North Arrow



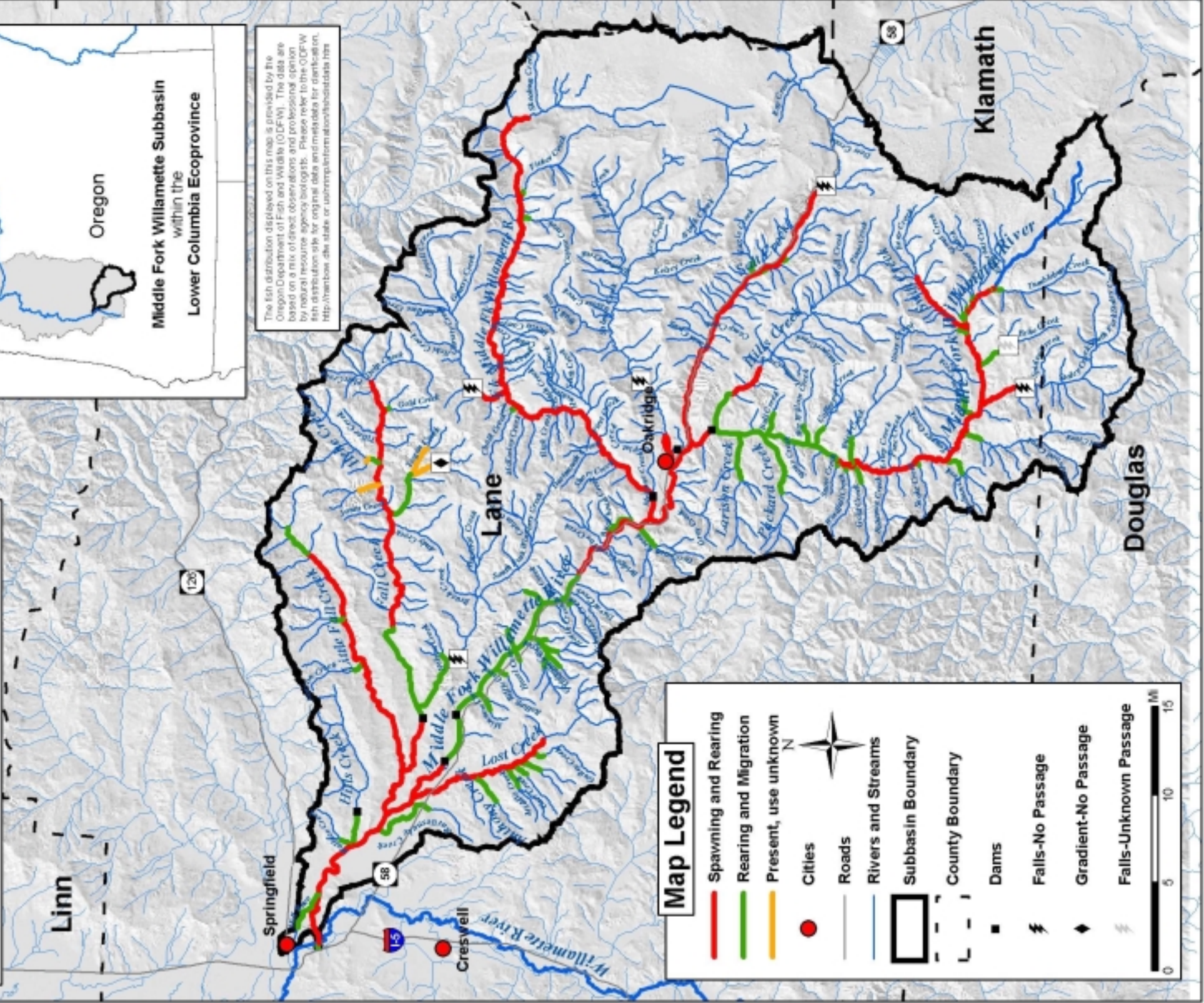
The fish distribution displayed on this map is provided by the Oregon Department of Fish and Wildlife (ODFW). The data are based on a mix of direct observations and professional opinion by natural resource agency biologists. Please refer to the ODFW fish distribution site for original data and metadata for clarification, <http://rainbow.dfw.state.or.us/nr/mpr/informations/fishd/stdata.htm>



**Dams and Barriers Affecting Spring Chinook Distribution within the Middle Fork Willamette Subbasin**



The fish distribution displayed on this map is provided by the Oregon Department of Fish and Wildlife (ODFW). The data are based on a mix of direct observations and professional opinion by natural resource agency biologists. Please refer to the ODFW fish distribution site for original data and metadata for clarification. <http://nwrbow.dfw.state.or.us/nwrp/inform/also/also.html>

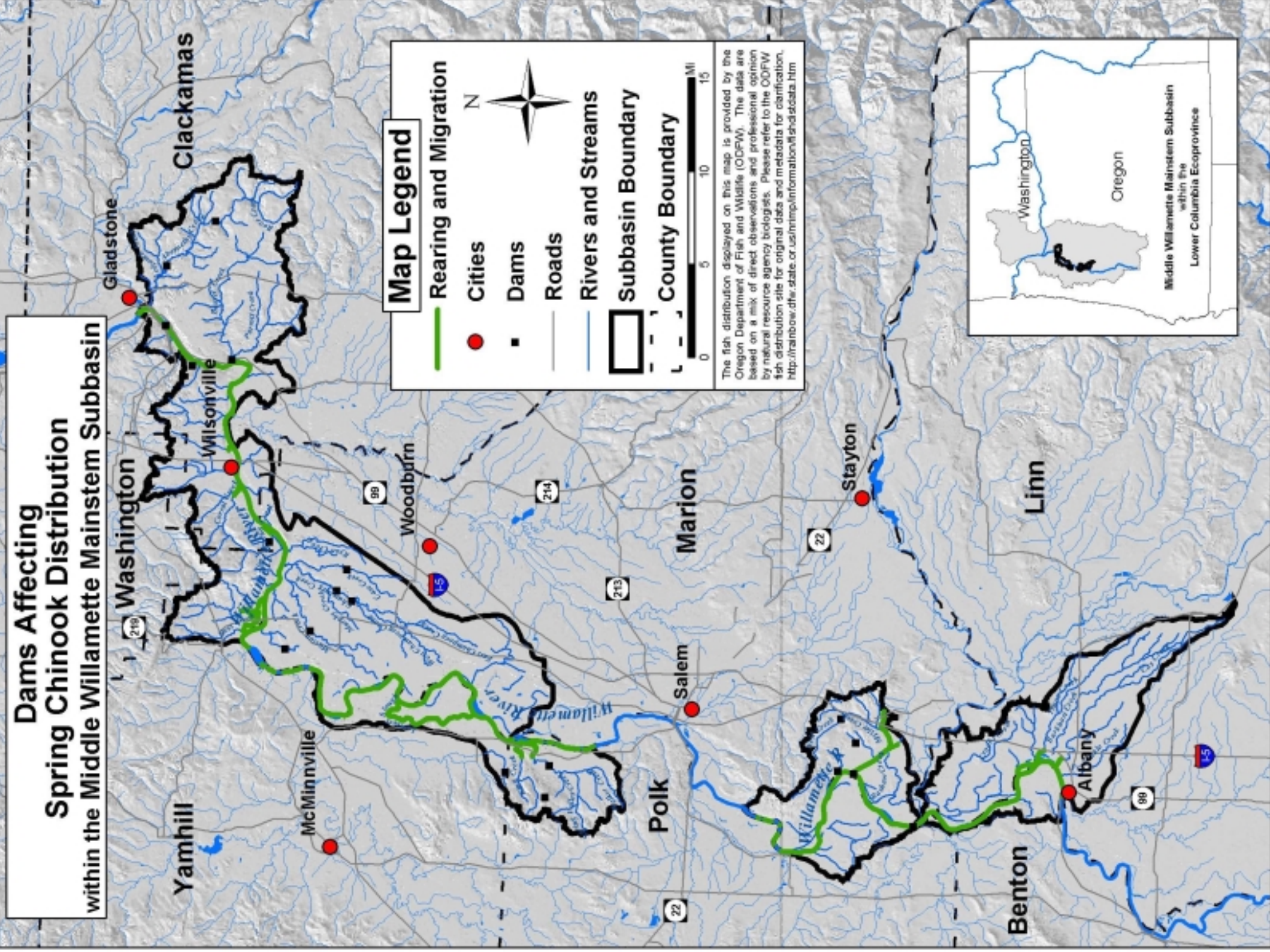


**Map Legend**

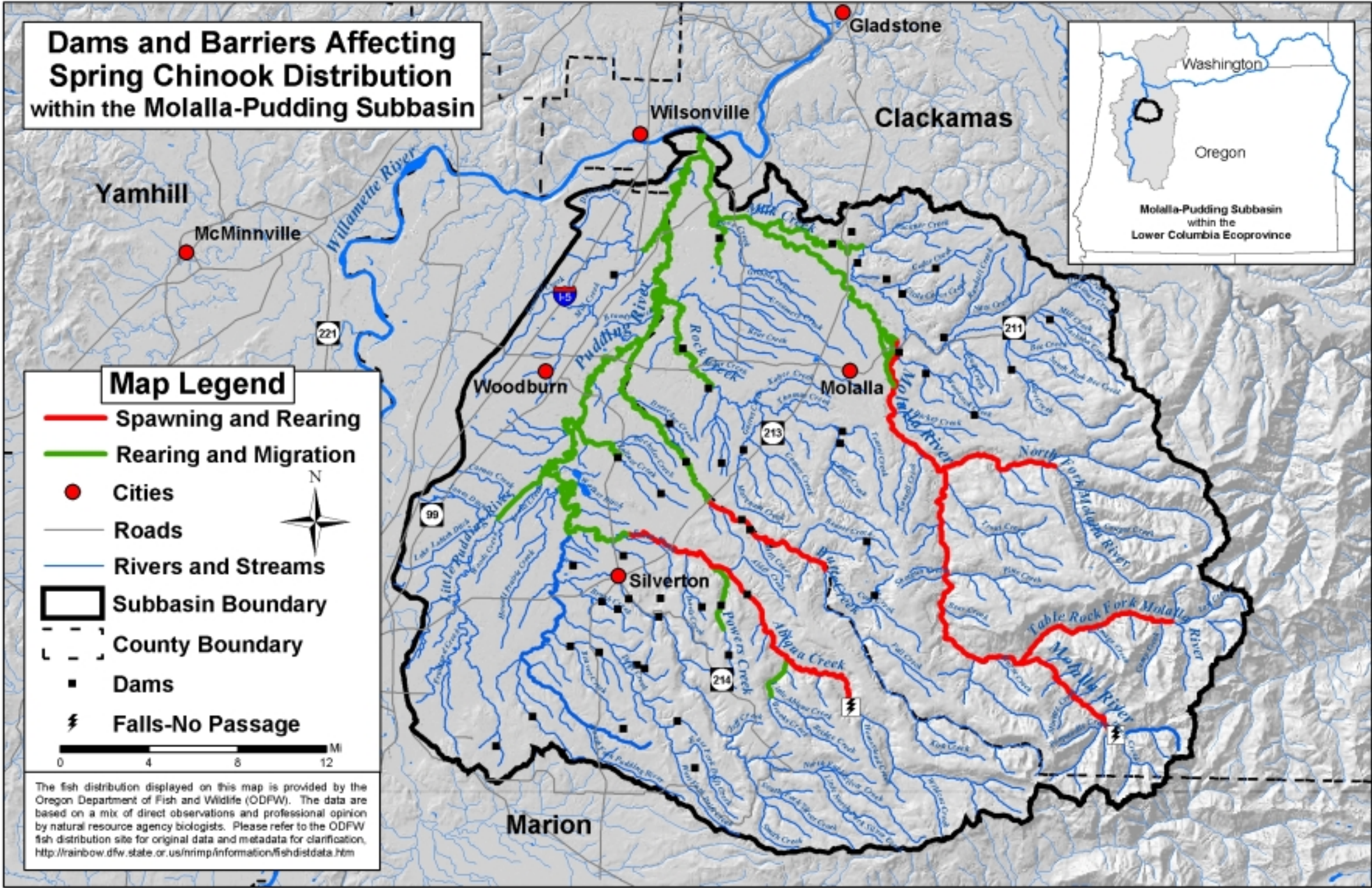
- Spawning and Rearing
- Rearing and Migration
- Present, use unknown
- Cities
- Roads
- Rivers and Streams
- ▭ Subbasin Boundary
- - - County Boundary
- Dams
- ⚡ Falls-No Passage
- ⬇ Gradient-No Passage
- ⚡ Falls-Unknown Passage

0 5 10 15 Miles









**Dams and Barriers Affecting Spring Chinook Distribution within the Molalla-Pudding Subbasin**

**Map Legend**

- Spawning and Rearing
- Rearing and Migration
- Cities
- Roads
- Rivers and Streams
- Subbasin Boundary
- - - County Boundary
- Dams
- ⚡ Falls-No Passage

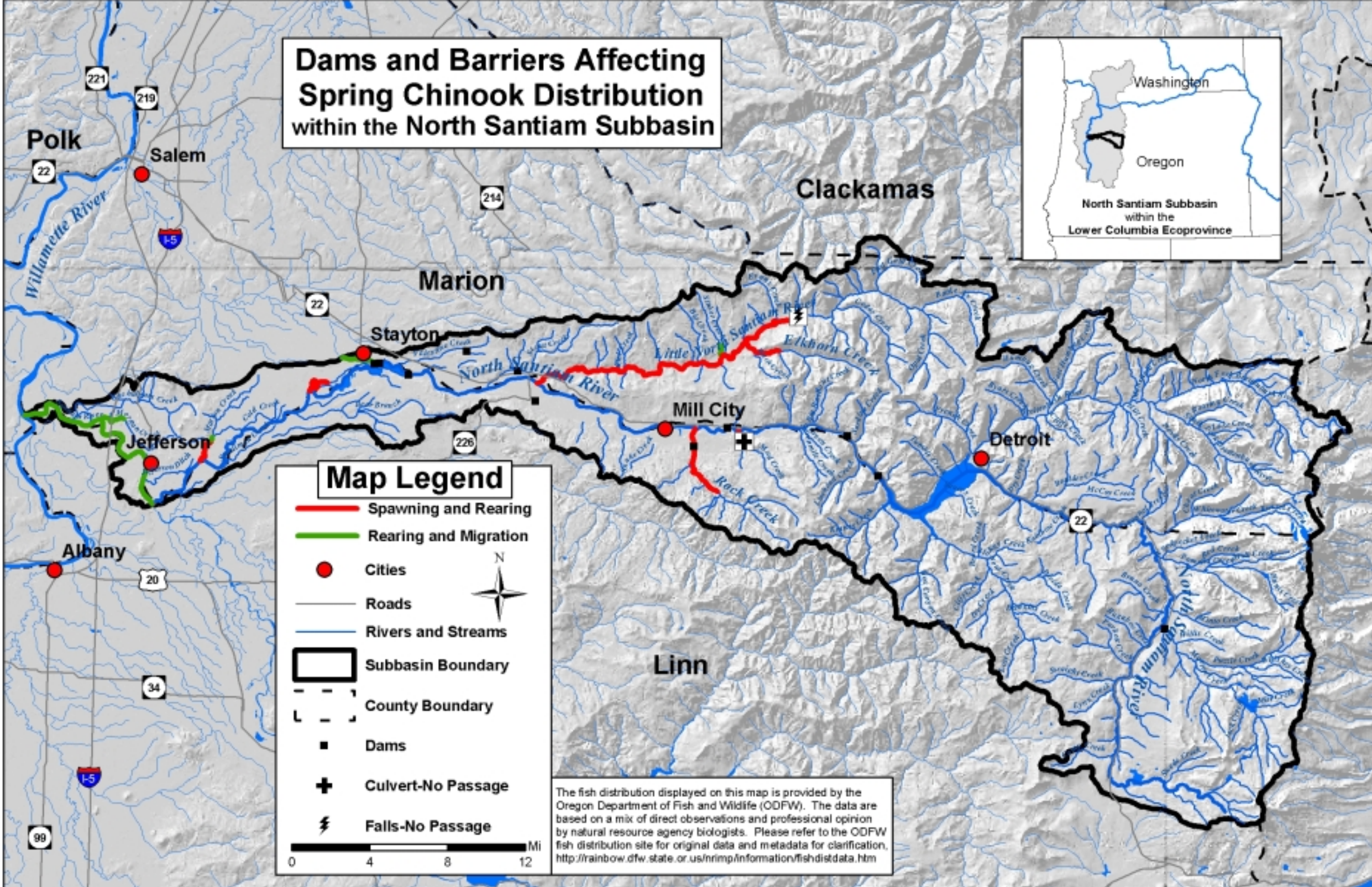
0 4 8 12 MI

The fish distribution displayed on this map is provided by the Oregon Department of Fish and Wildlife (ODFW). The data are based on a mix of direct observations and professional opinion by natural resource agency biologists. Please refer to the ODFW fish distribution site for original data and metadata for clarification, <http://rainbow.dfw.state.or.us/nrimp/information/fishdistdata.htm>





# Dams and Barriers Affecting Spring Chinook Distribution within the North Santiam Subbasin



### Map Legend

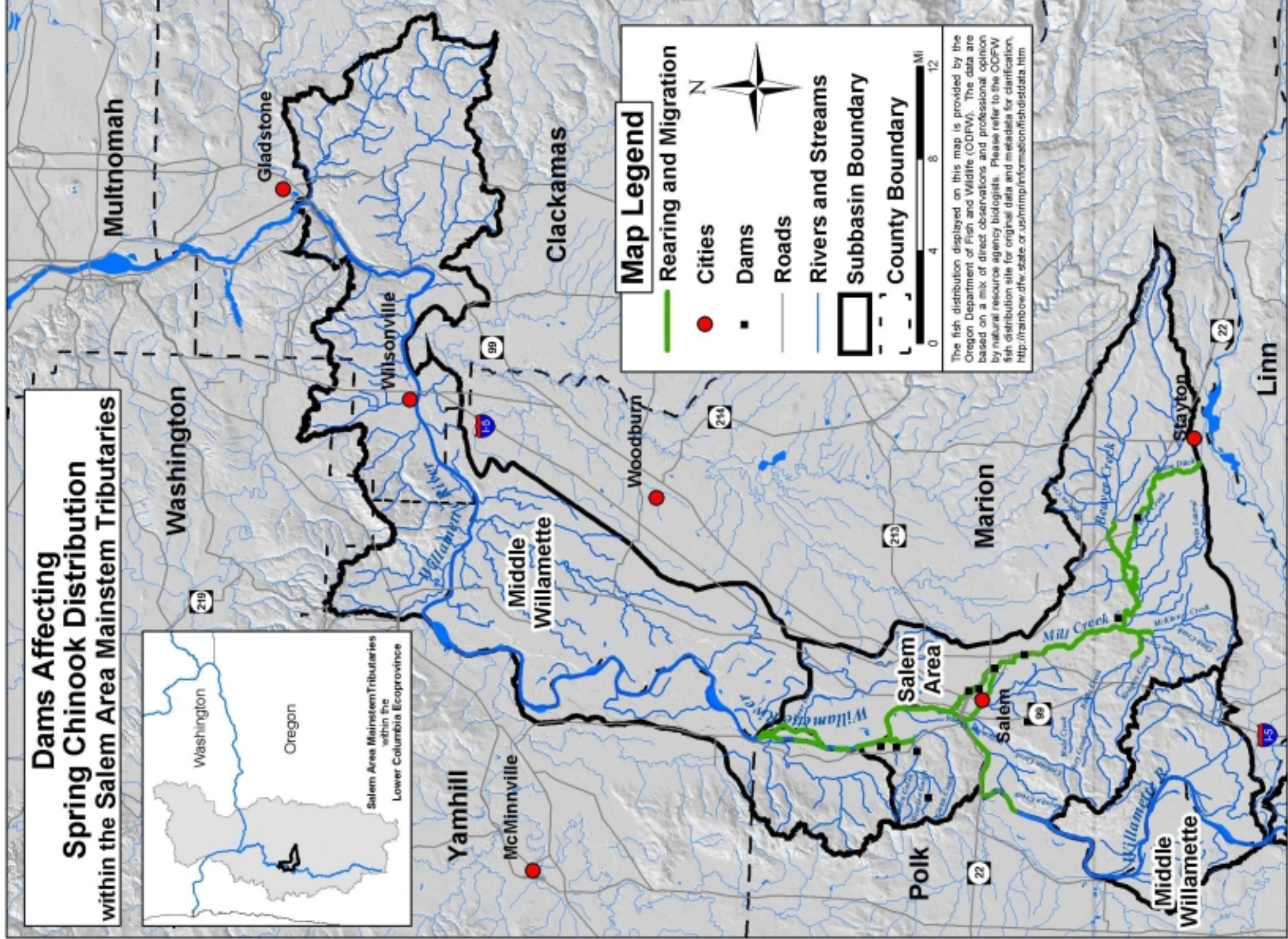
- Spawning and Rearing
- Rearing and Migration
- Cities
- Roads
- Rivers and Streams
- ▭ Subbasin Boundary
- - - County Boundary
- Dams
- ⊕ Culvert-No Passage
- ⚡ Falls-No Passage

N

0 4 8 12 Mi

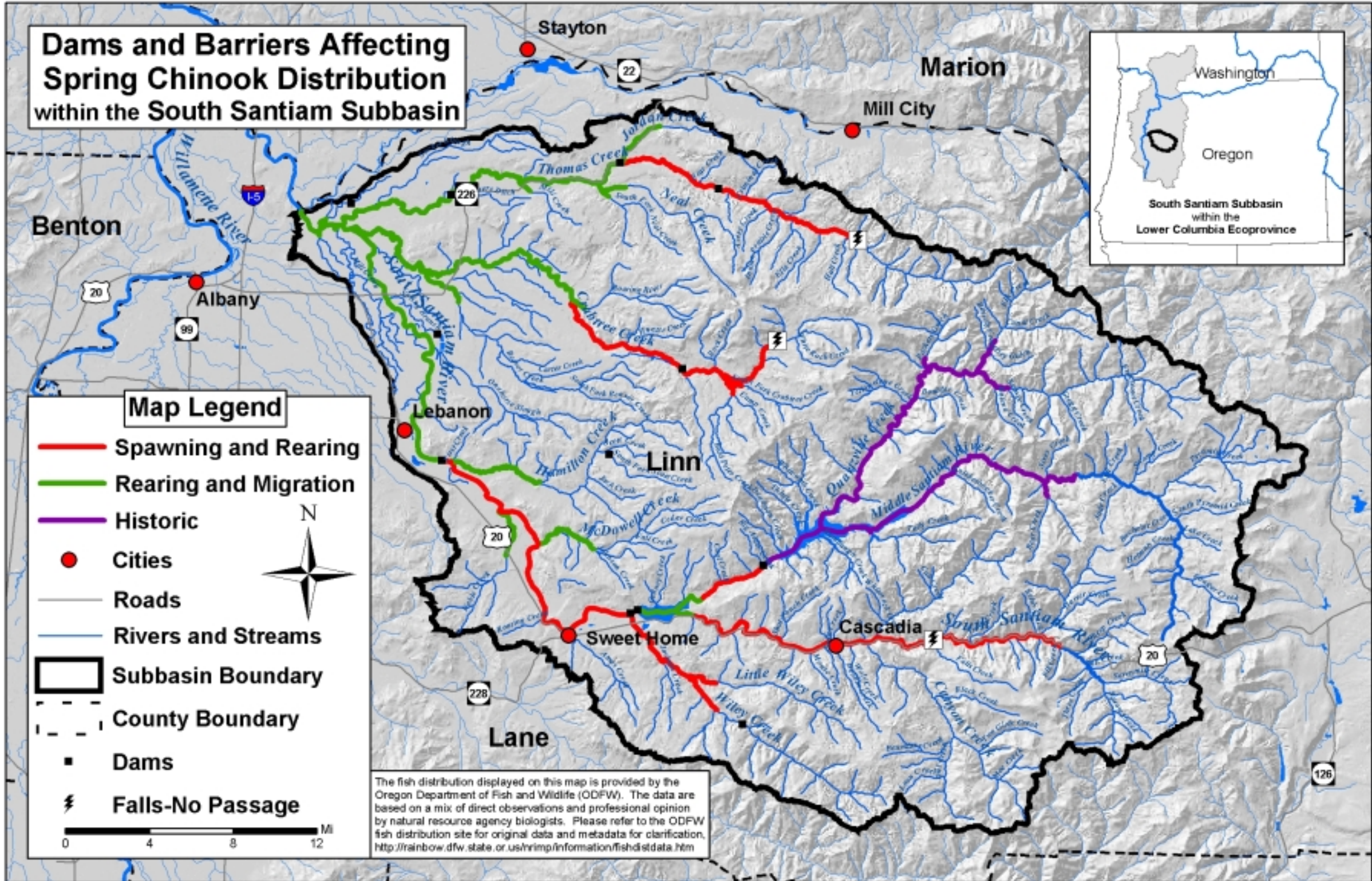
The fish distribution displayed on this map is provided by the Oregon Department of Fish and Wildlife (ODFW). The data are based on a mix of direct observations and professional opinion by natural resource agency biologists. Please refer to the ODFW fish distribution site for original data and metadata for clarification, <http://rainbow.dfw.state.or.us/nrmp/information/fishdistdata.htm>





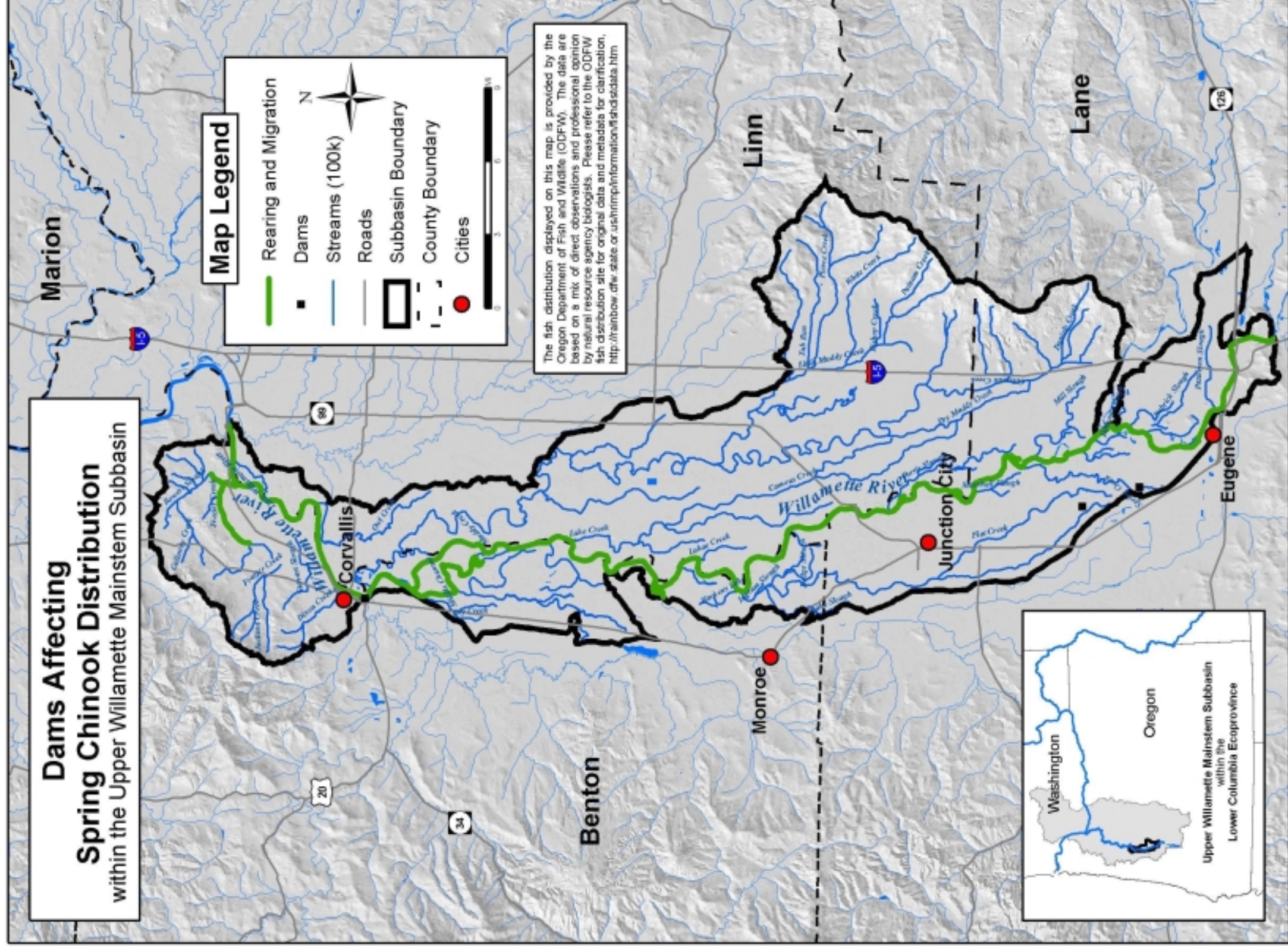


# Dams and Barriers Affecting Spring Chinook Distribution within the South Santiam Subbasin





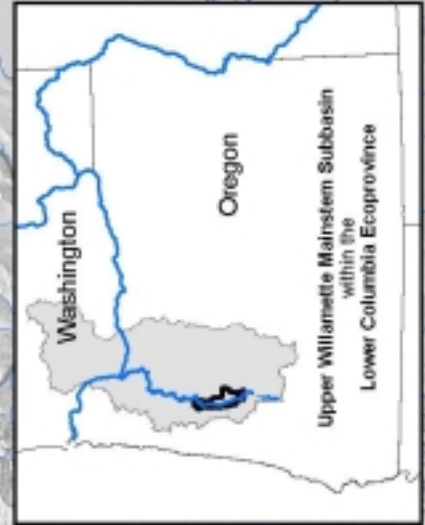
# Dams Affecting Spring Chinook Distribution within the Upper Willamette Mainstem Subbasin



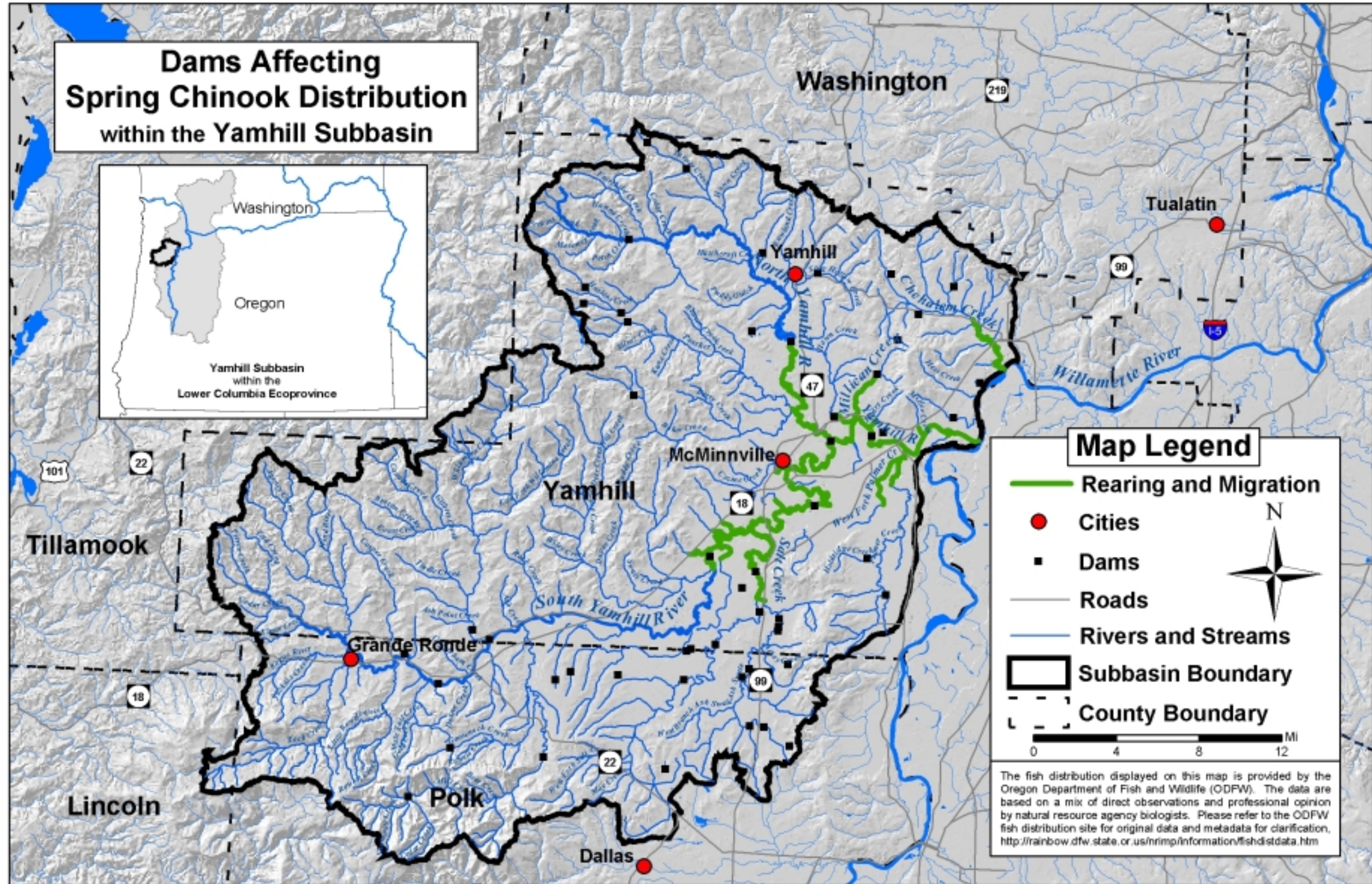
## Map Legend

- Rearing and Migration
- Dams
- Streams (100k)
- Roads
- Subbasin Boundary
- County Boundary
- Cities

The fish distribution displayed on this map is provided by the Oregon Department of Fish and Wildlife (ODFW). The data are based on a mix of direct observations and professional opinion by natural resource agency biologists. Please refer to the ODFW fish distribution site for original data and metadata for clarification, <http://rainbow.oregon.gov/state/information/fish/distdata.htm>







**Dams Affecting Spring Chinook Distribution within the Yamhill Subbasin**



**Map Legend**

- Rearing and Migration
- Cities
- Dams
- Roads
- Rivers and Streams
- Subbasin Boundary
- County Boundary

N

0 4 8 12 Mi

The fish distribution displayed on this map is provided by the Oregon Department of Fish and Wildlife (ODFW). The data are based on a mix of direct observations and professional opinion by natural resource agency biologists. Please refer to the ODFW fish distribution site for original data and metadata for clarification, <http://rainbow.dfw.state.or.us/nrmp/information/fishdistdata.htm>