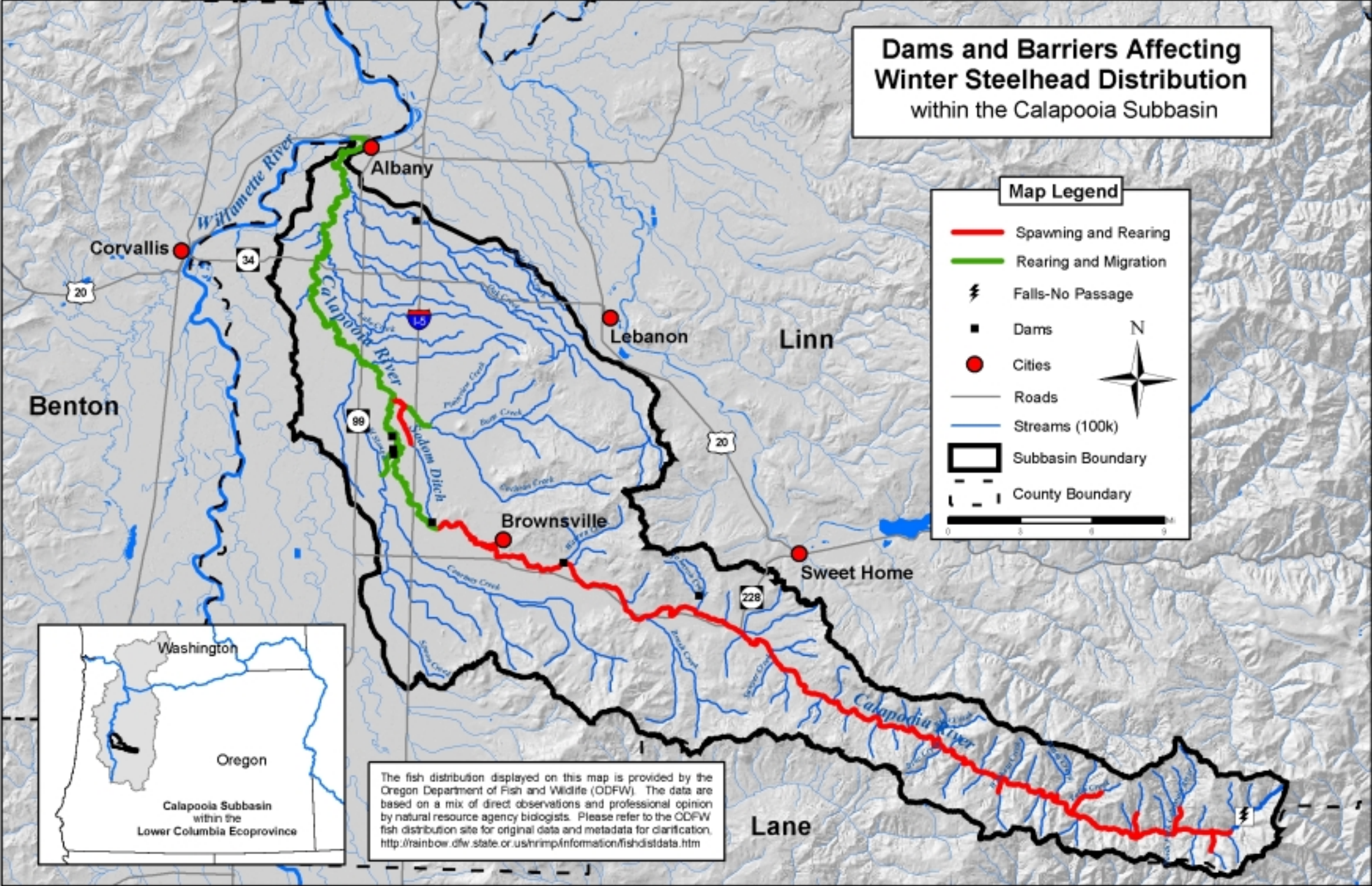


Steelhead Barriers

Dams and Barriers Affecting Winter Steelhead Distribution within the Calapooia Subbasin

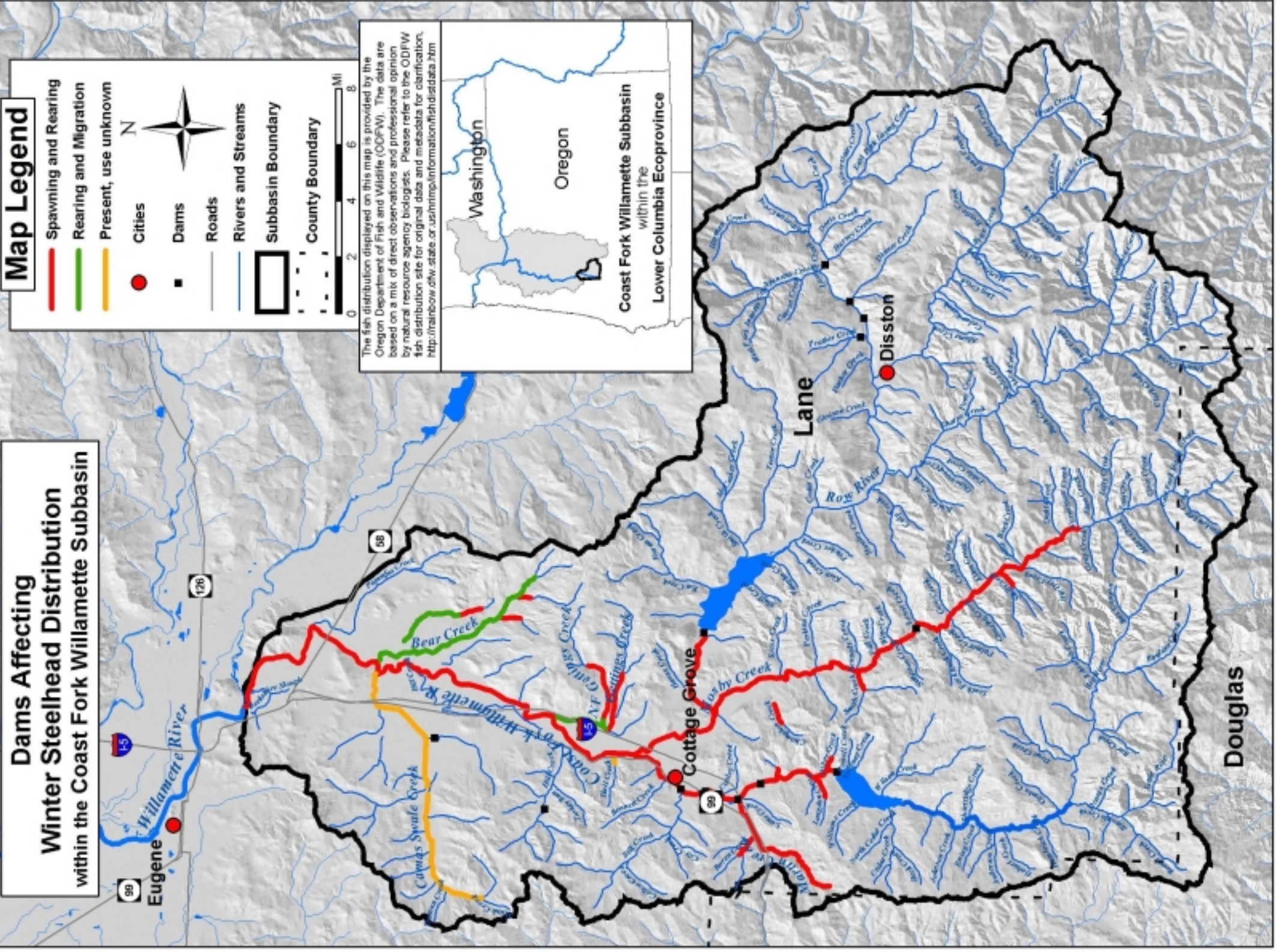


Map Legend

- Spawning and Rearing
- Rearing and Migration
- ⚡ Falls-No Passage
- Dams
- Cities
- Roads
- Streams (100k)
- ▭ Subbasin Boundary
- - - County Boundary

The fish distribution displayed on this map is provided by the Oregon Department of Fish and Wildlife (ODFW). The data are based on a mix of direct observations and professional opinion by natural resource agency biologists. Please refer to the ODFW fish distribution site for original data and metadata for clarification. <http://rainbow.odfw.state.or.us/nrmp/information/fishdistdata.htm>

Washington
Oregon
Calapooia Subbasin
within the
Lower Columbia Ecoprovince



Map Legend

- Spawning and Rearing
- Rearing and Migration
- Present, use unknown
- Cities
- Dams
- Roads
- Rivers and Streams
- Subbasin Boundary
- County Boundary

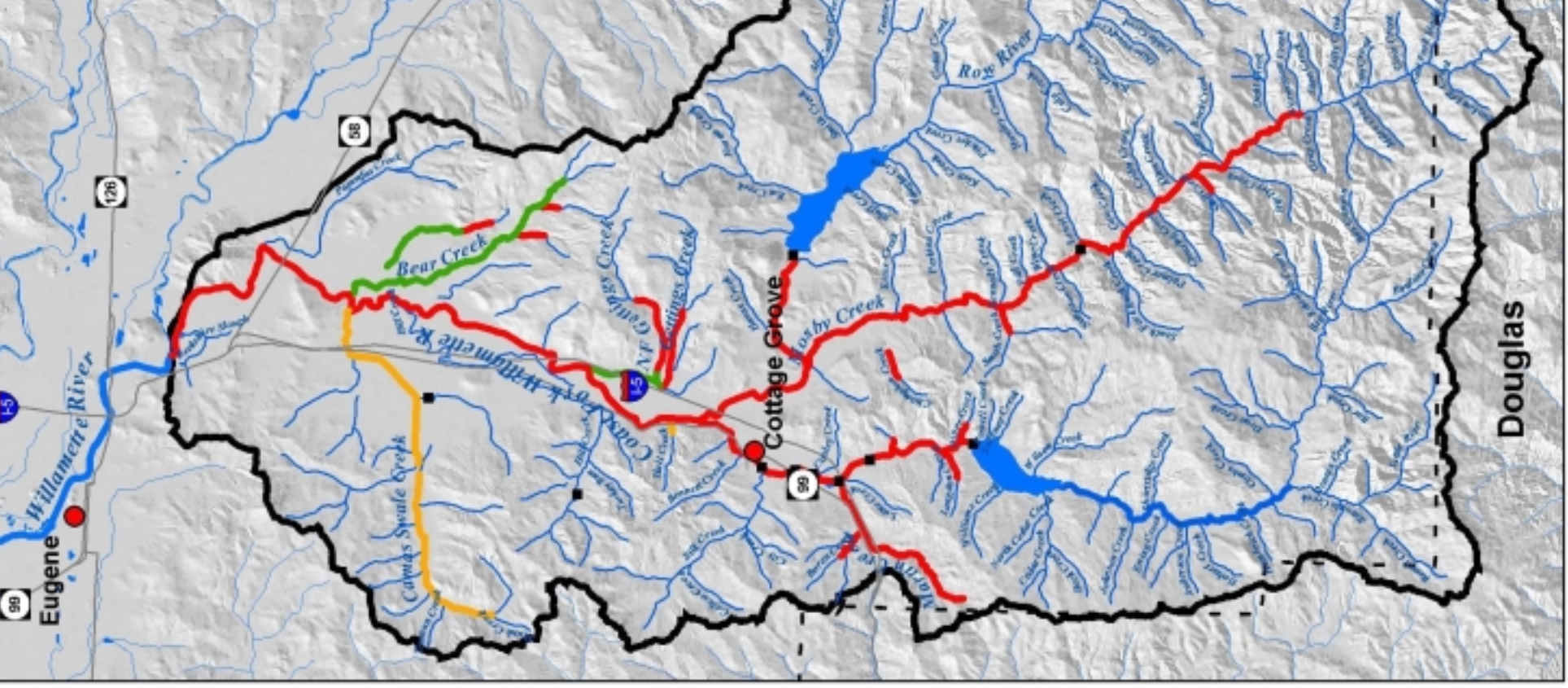


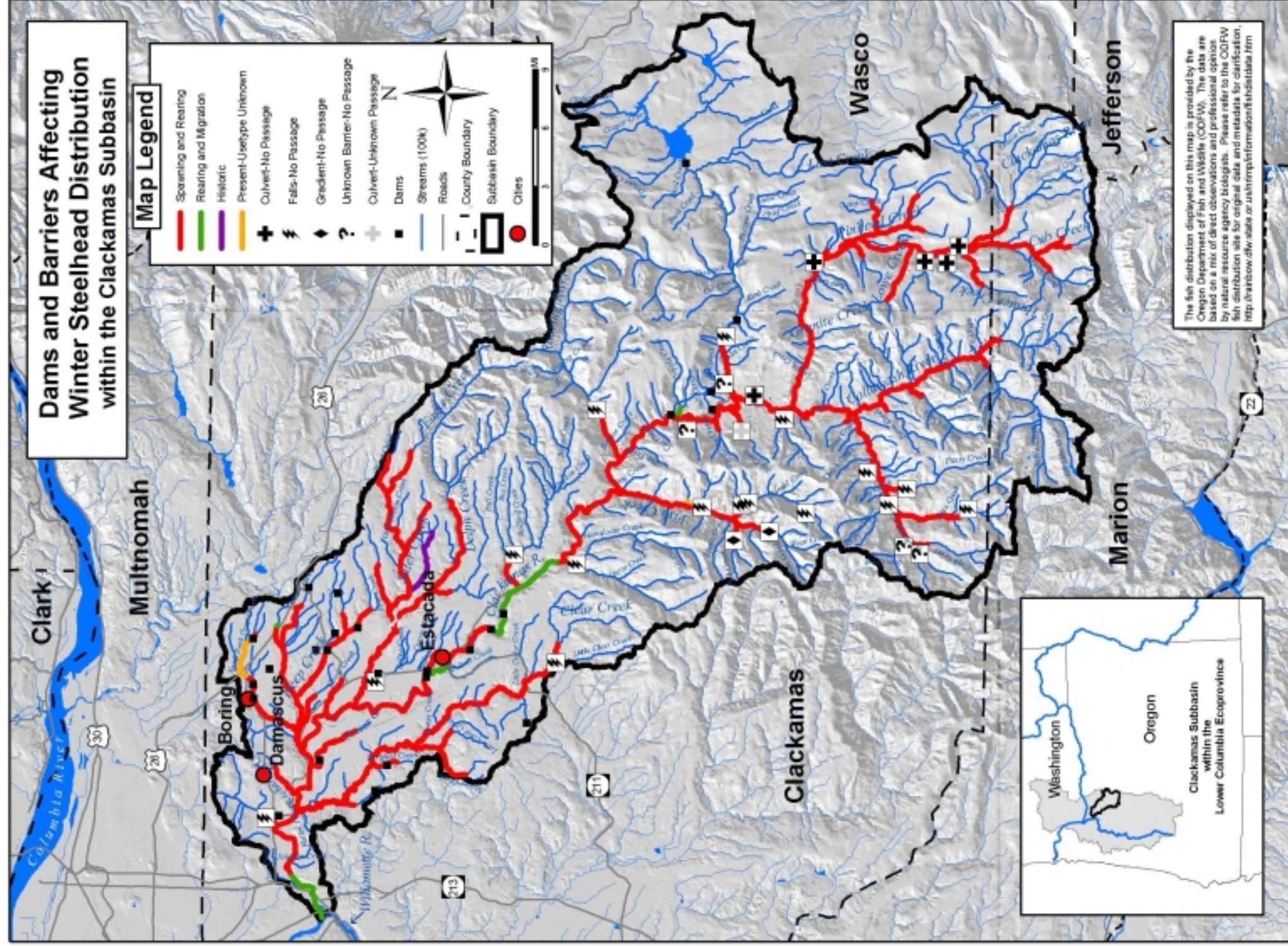
0 2 4 6 8
MI

The fish distribution displayed on this map is provided by the Oregon Department of Fish and Wildlife (ODFW). The data are based on a mix of direct observations and professional opinion by natural resource agency biologists. Please refer to the ODFW fish distribution site for original data and metadata for clarification. <http://rainbow.odfw.state.or.us/html/information/fish/data.htm>

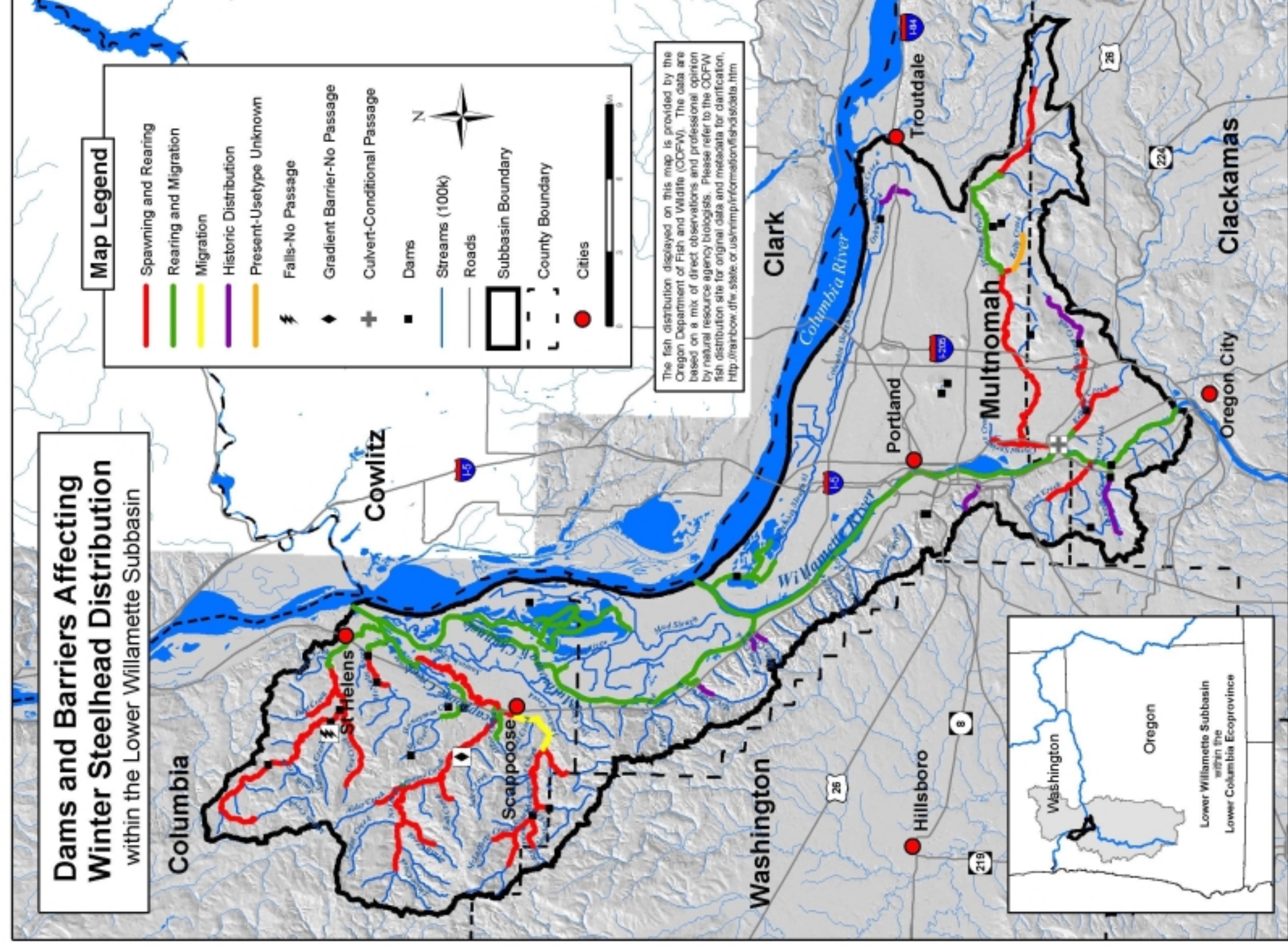


Dams Affecting Winter Steelhead Distribution within the Coast Fork Willamette Subbasin





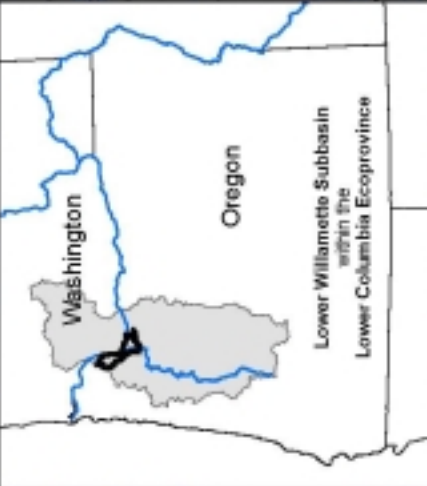
Dams and Barriers Affecting Winter Steelhead Distribution within the Lower Willamette Subbasin



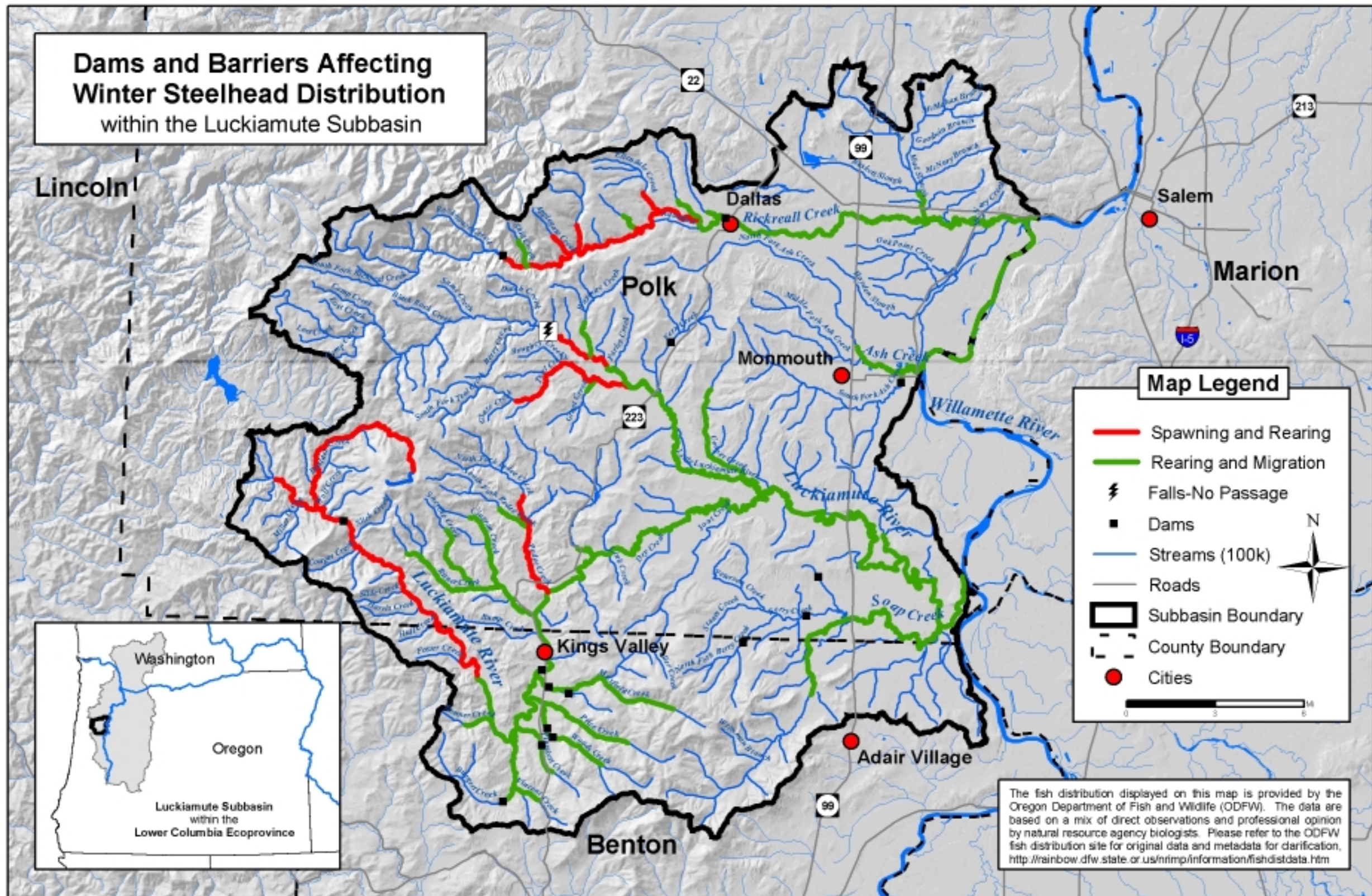
Map Legend

- Spawning and Rearing
- Rearing and Migration
- Migration
- Historic Distribution
- Present-Use type Unknown
- Falls-No Passage
- Gradient Barrier-No Passage
- Culvert-Conditional Passage
- Dams
- Streams (100k)
- Roads
- Subbasin Boundary
- County Boundary
- Cities

The fish distribution displayed on this map is provided by the Oregon Department of Fish and Wildlife (ODFW). The data are based on a mix of direct observations and professional opinion by natural resource agency biologists. Please refer to the ODFW fish distribution site for original data and metadata for clarification. <http://rainbow.dfw.state.or.us/nrmp/information/fishdist/steata.htm>



Dams and Barriers Affecting Winter Steelhead Distribution within the Luckiamute Subbasin

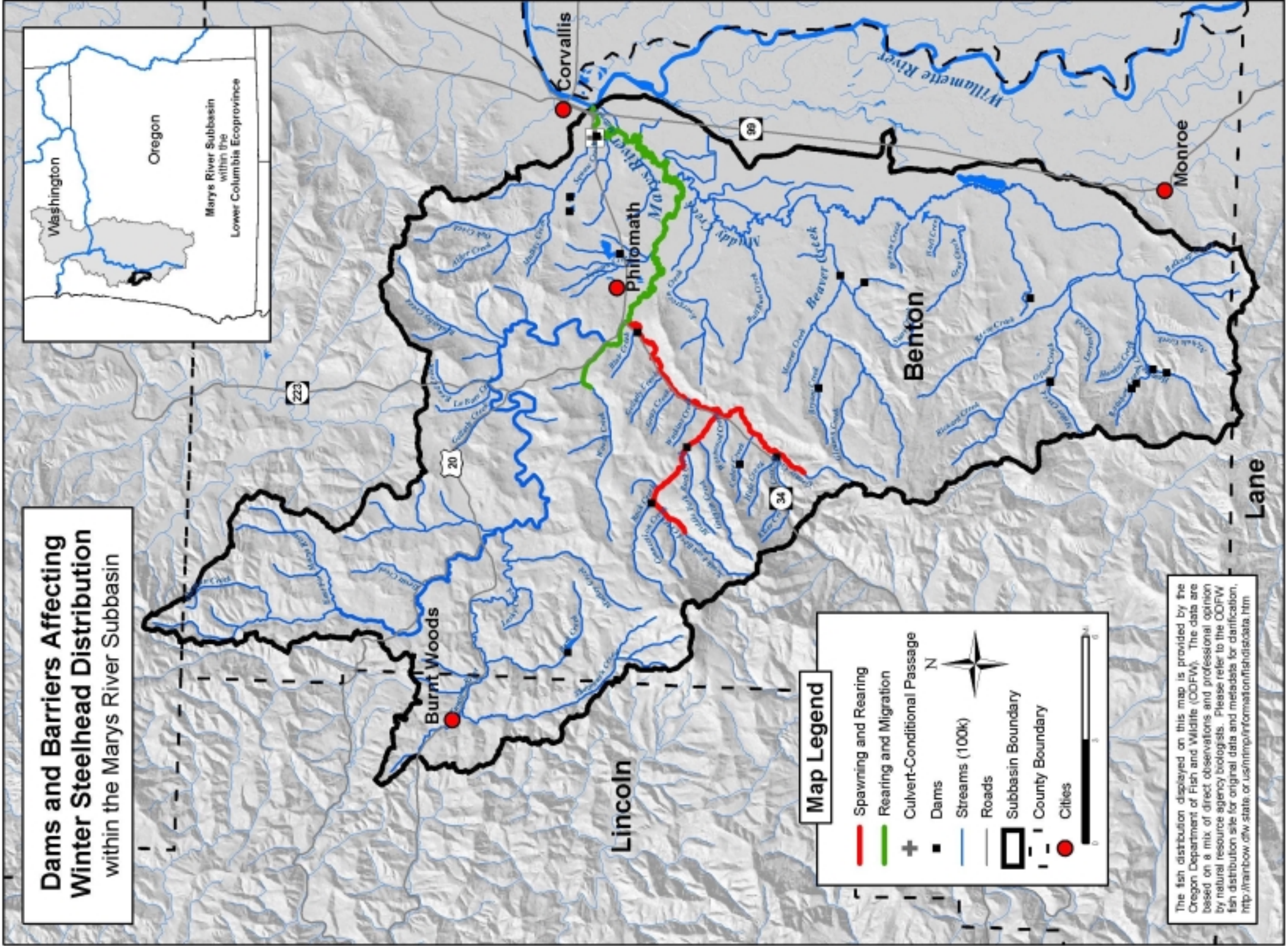


Map Legend

- Spawning and Rearing
- Rearing and Migration
- ⚡ Falls-No Passage
- Dams
- Streams (100k)
- Roads
- ▭ Subbasin Boundary
- - - County Boundary
- Cities

The fish distribution displayed on this map is provided by the Oregon Department of Fish and Wildlife (ODFW). The data are based on a mix of direct observations and professional opinion by natural resource agency biologists. Please refer to the ODFW fish distribution site for original data and metadata for clarification. <http://rainbow.dfw.state.or.us/nrmp/information/fishdistdata.htm>

Dams and Barriers Affecting Winter Steelhead Distribution within the Marys River Subbasin



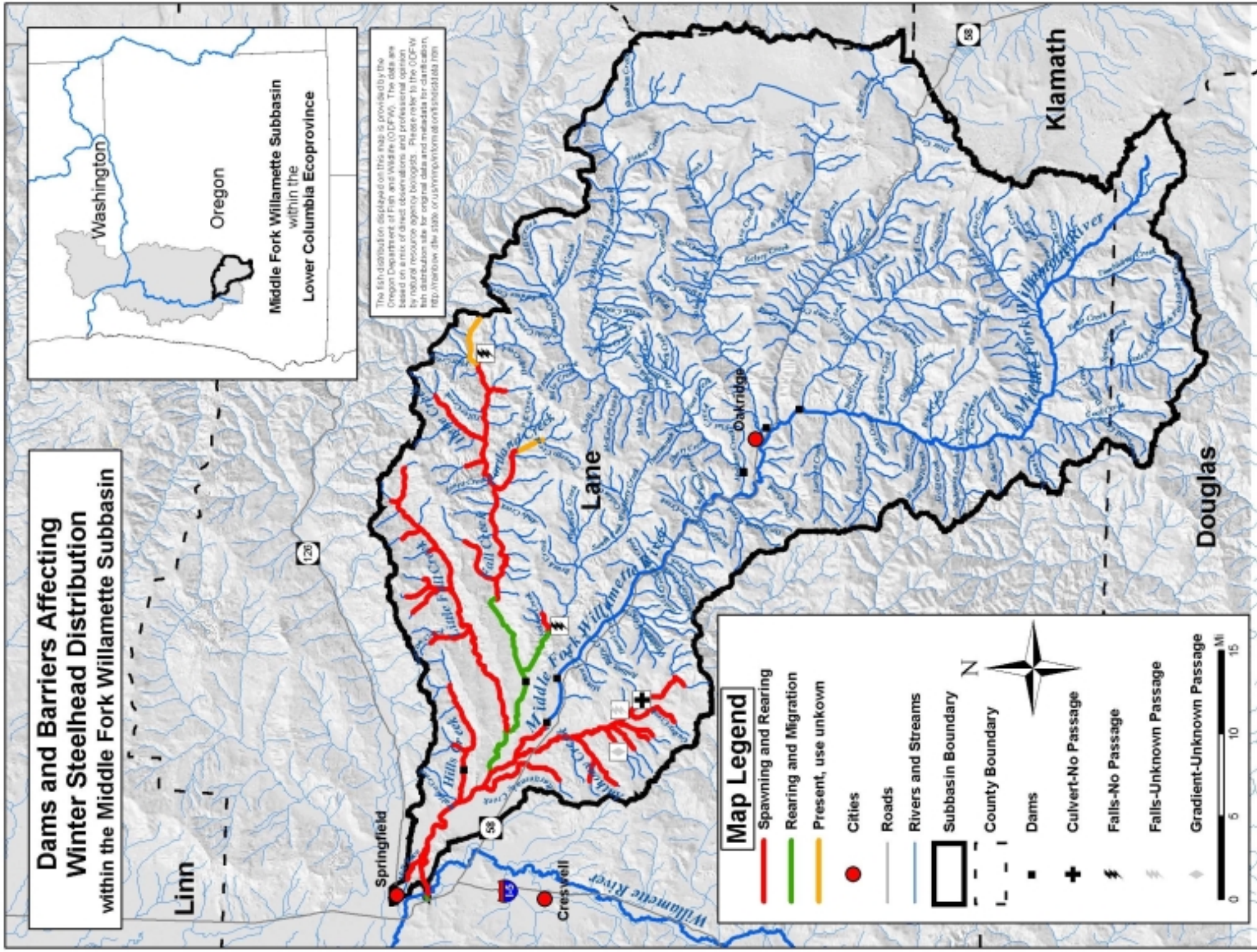
Map Legend

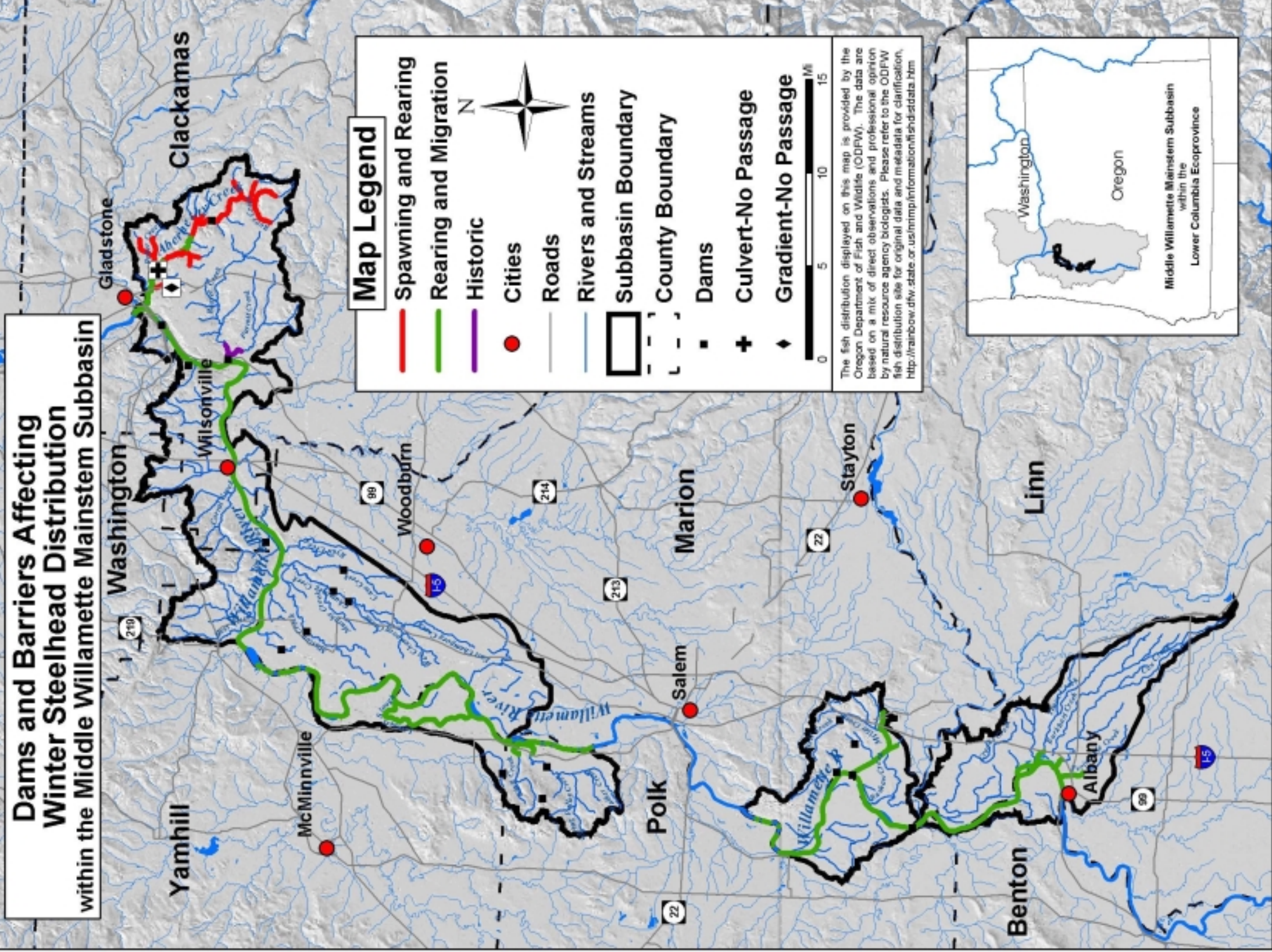
- Spawning and Rearing
- Rearing and Migration
- ⊕ Culvert-Conditional Passage
- Dams
- Streams (100k)
- Roads
- ▭ Subbasin Boundary
- - - County Boundary
- Cities

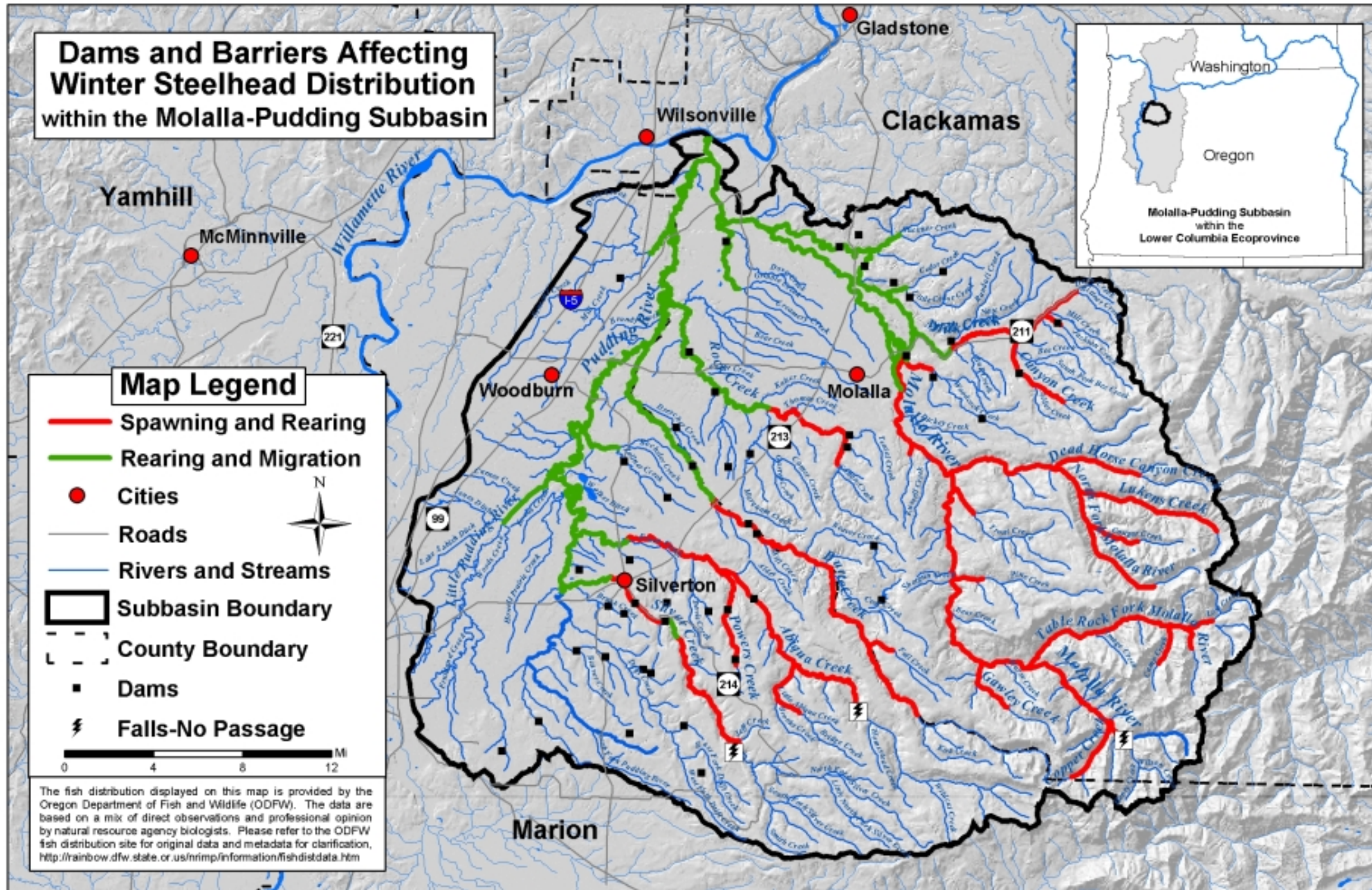
Scale: 0 to 6 miles

North Arrow

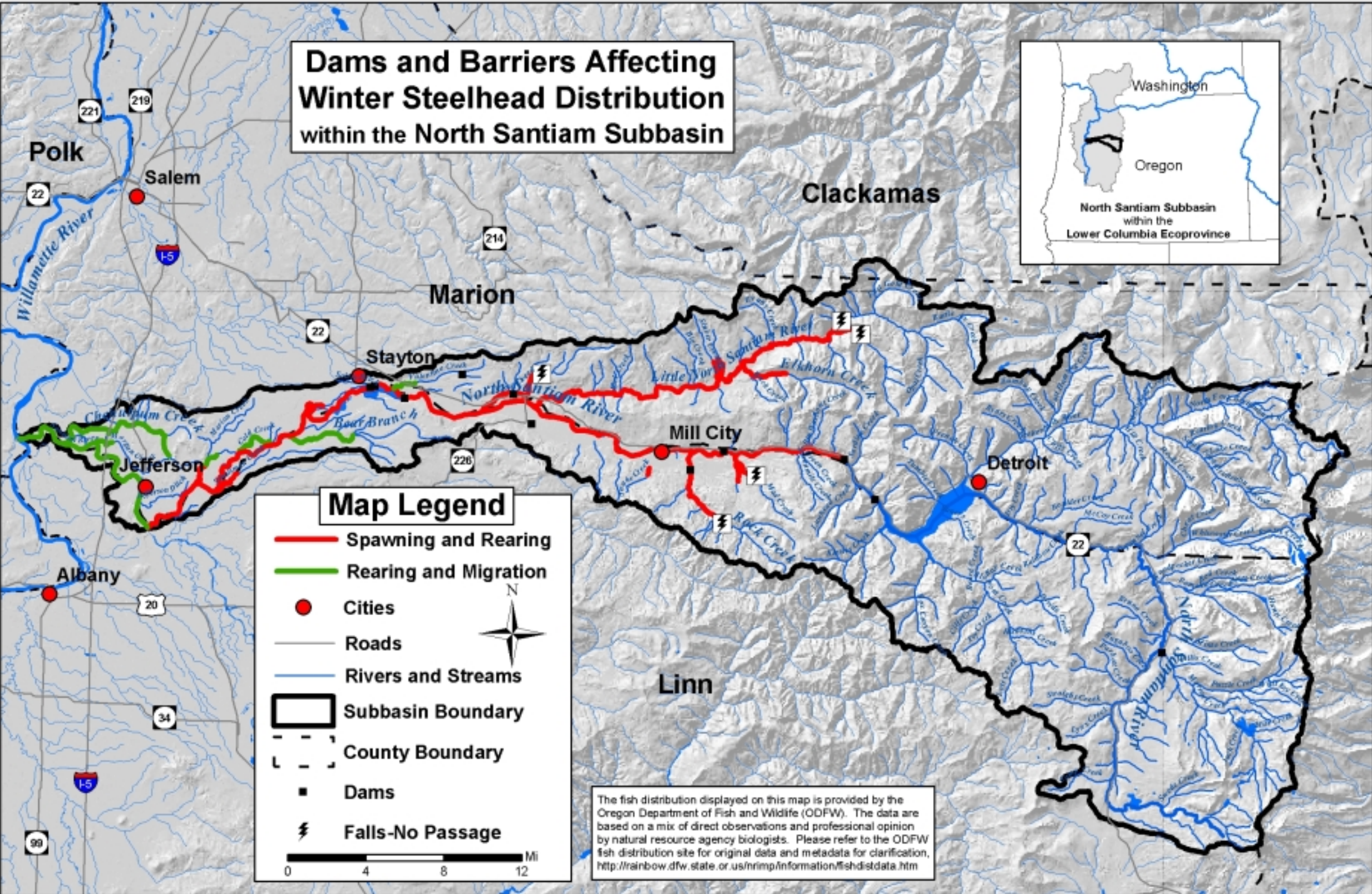
The fish distribution displayed on this map is provided by the Oregon Department of Fish and Wildlife (ODFW). The data are based on a mix of direct observations and professional opinion by natural resource agency biologists. Please refer to the ODFW fish distribution site for original data and metadata for clarification. <http://rainbow.odfw.state.or.us/mtrmp/information/fishdata.htm>







Dams and Barriers Affecting Winter Steelhead Distribution within the North Santiam Subbasin



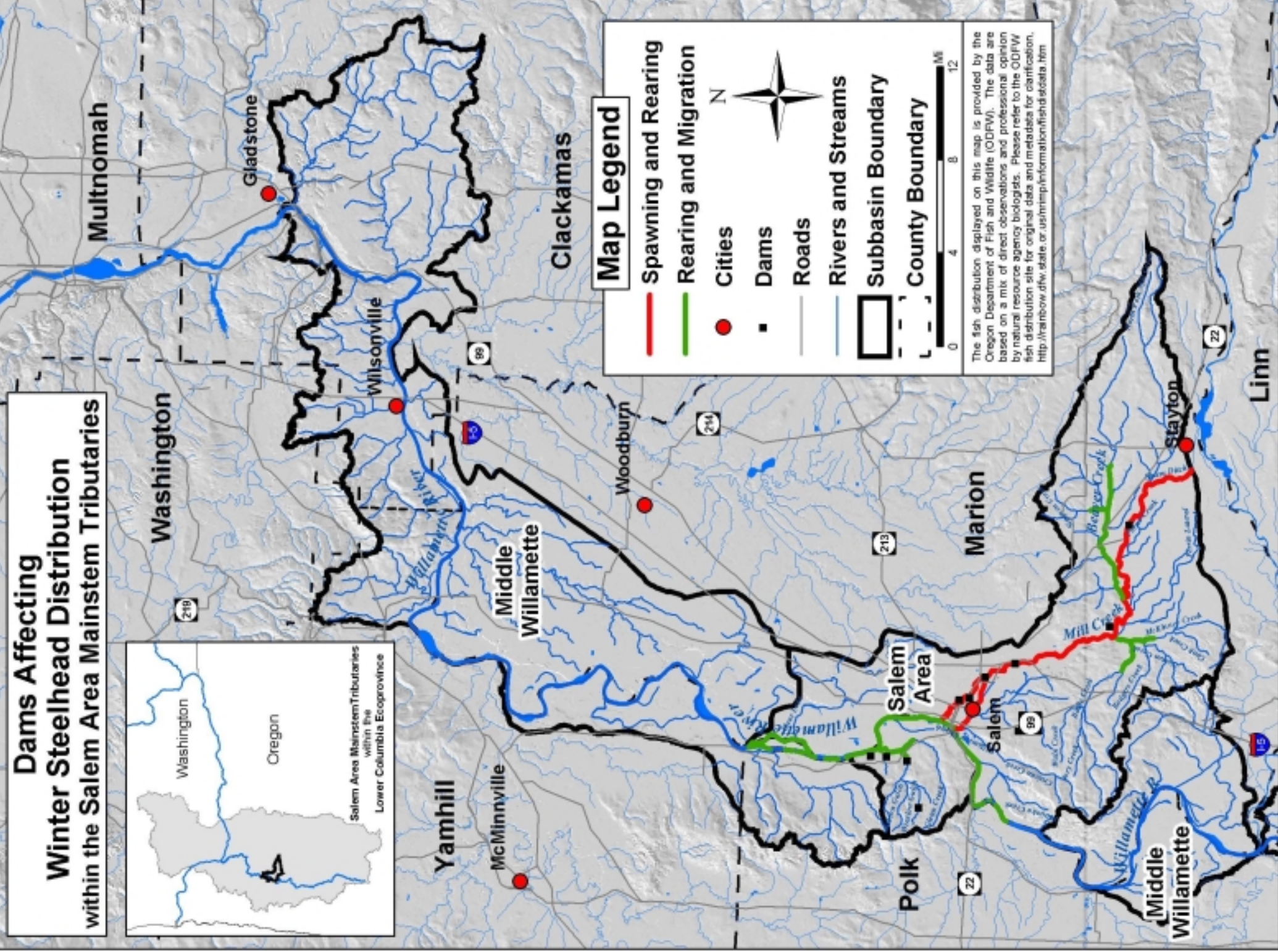
Map Legend

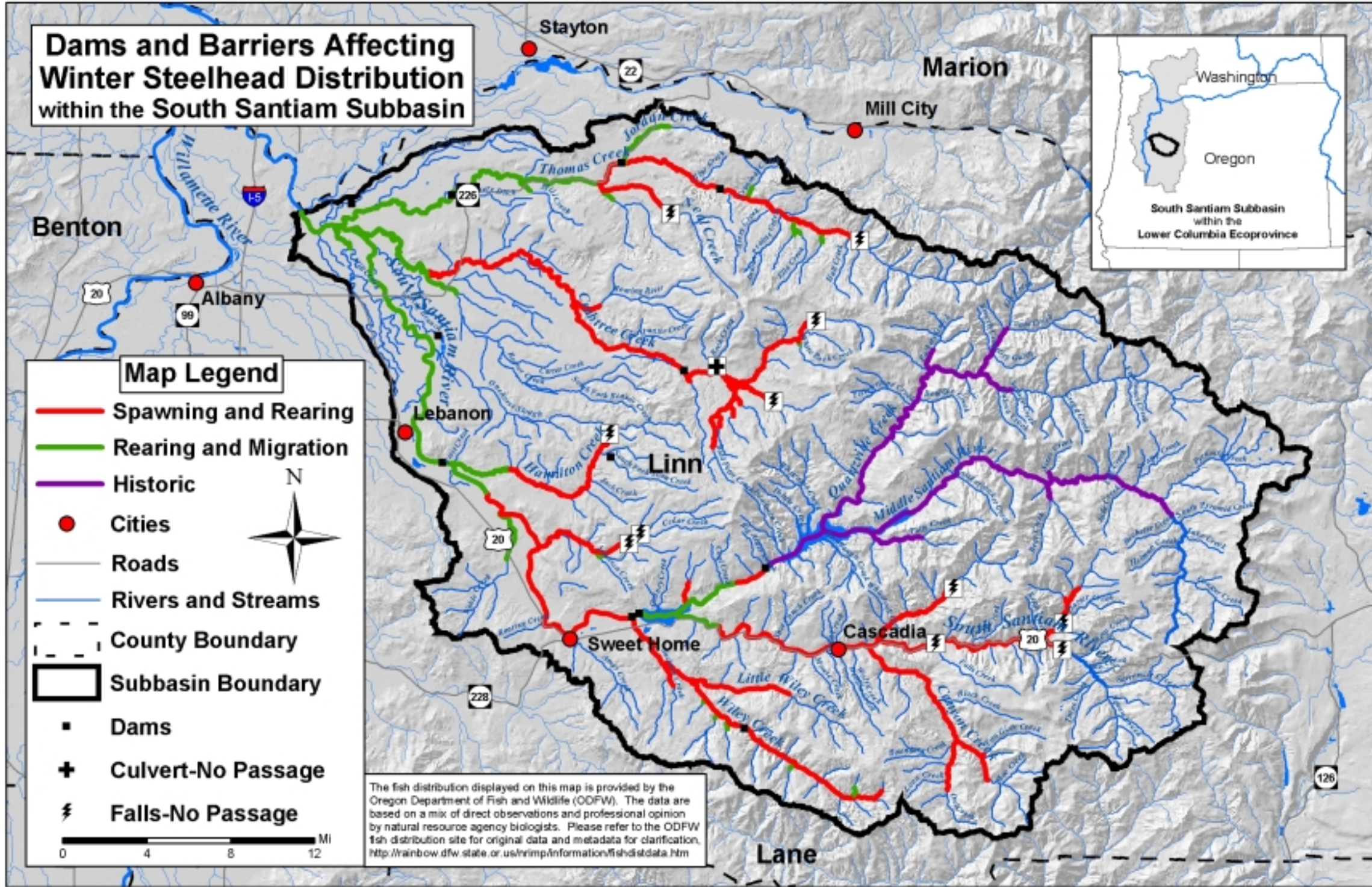
- Spawning and Rearing
- Rearing and Migration
- Cities
- Roads
- Rivers and Streams
- ▭ Subbasin Boundary
- - - County Boundary
- Dams
- ⚡ Falls-No Passage

N

0 4 8 12 Mi

The fish distribution displayed on this map is provided by the Oregon Department of Fish and Wildlife (ODFW). The data are based on a mix of direct observations and professional opinion by natural resource agency biologists. Please refer to the ODFW fish distribution site for original data and metadata for clarification, <http://rainbow.dfw.state.or.us/rimp/information/fishdistdata.htm>





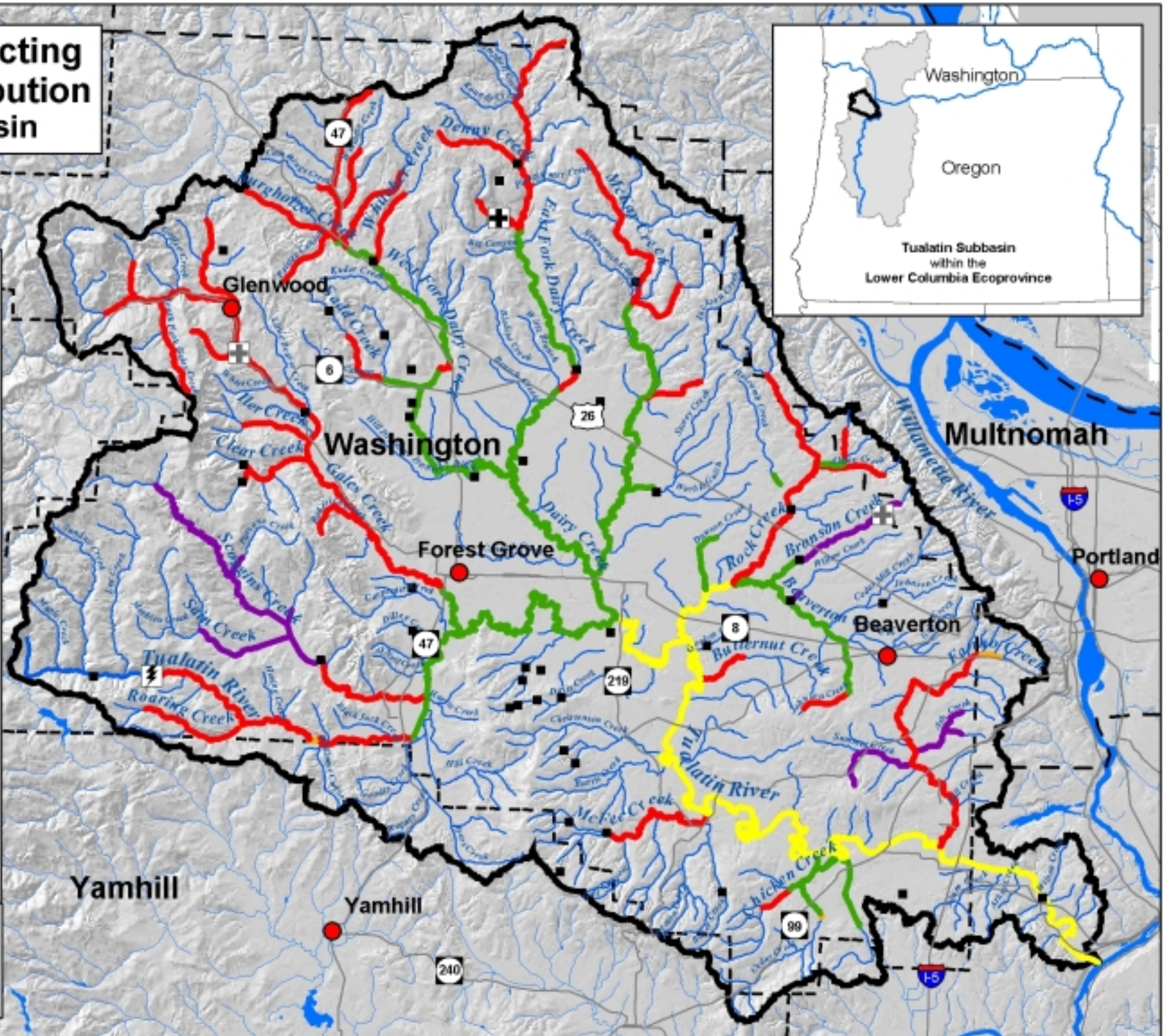
Dams and Barriers Affecting Winter Steelhead Distribution within the Tualatin Subbasin

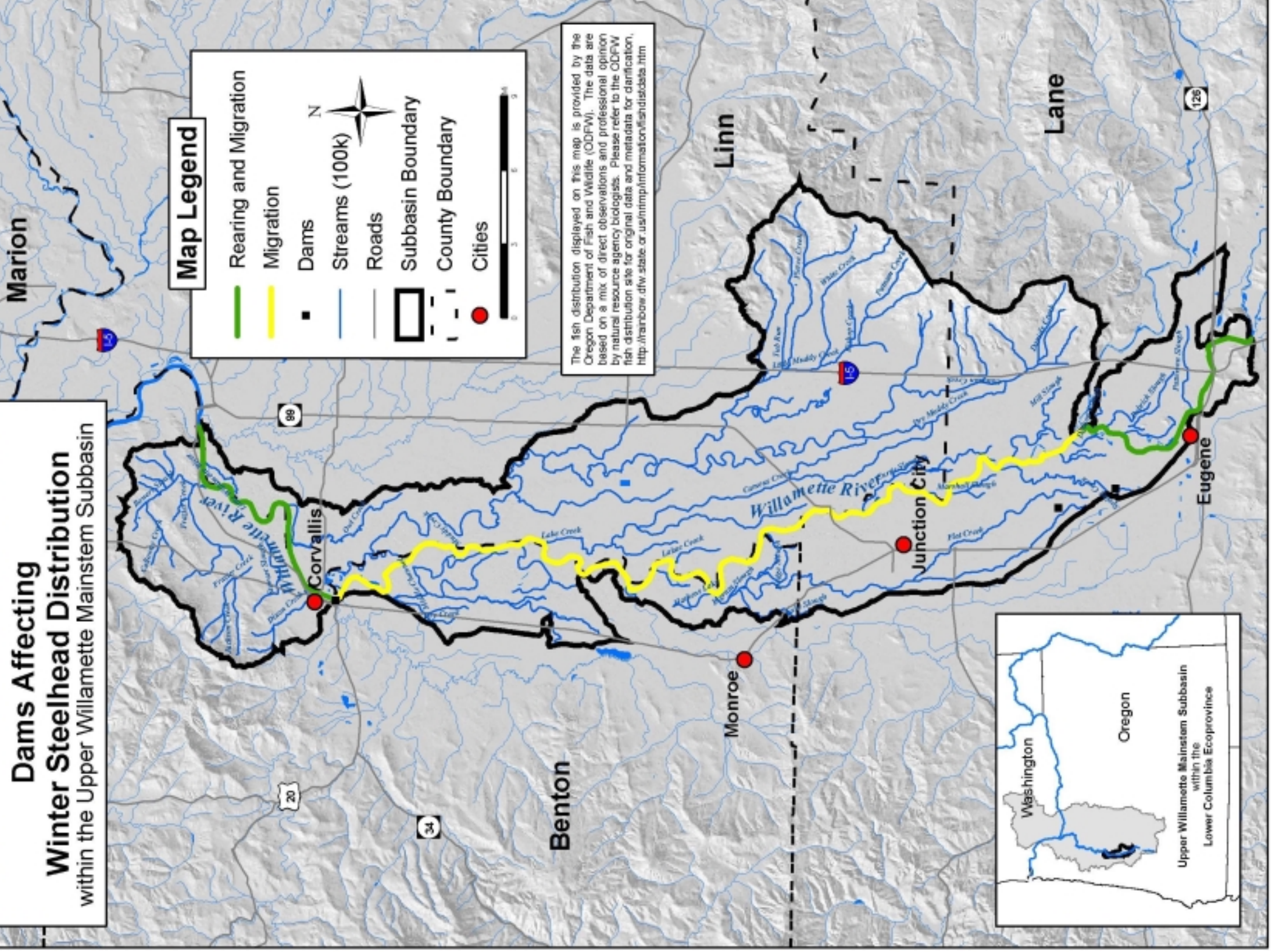
Map Legend

- Spawning and Rearing
- Rearing and Migration
- Migration only
- Historic
- Present, use unknown
- Cities
- Roads
- Rivers and Streams
- Subbasin Boundary
- County Boundary
- Dams
- + Culvert-No Passage
- ⚡ Falls-No Passage
- + Culvert-Conditional Passage

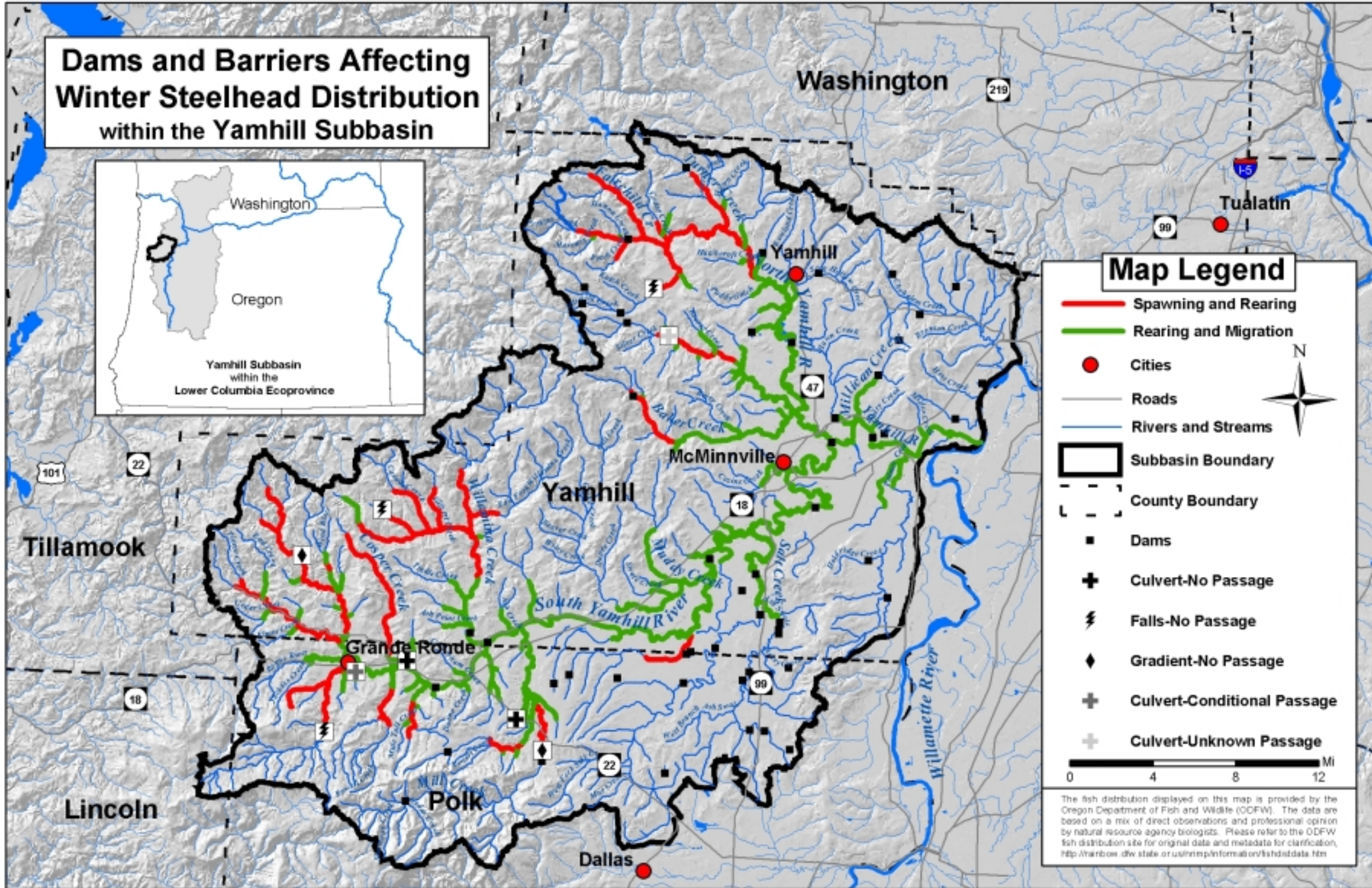
0 4 8 12 Mi

The fish distribution displayed on this map is provided by the Oregon Department of Fish and Wildlife (ODFW). The data are based on a mix of direct observations and professional opinion by natural resource agency biologists. Please refer to the ODFW fish distribution site for original data and metadata for clarification. <http://rainbow.dfw.state.or.us/nrimp/information/fishdistdata.htm>





Dams and Barriers Affecting Winter Steelhead Distribution within the Yamhill Subbasin



Map Legend

- Spawning and Rearing
 - Rearing and Migration
 - Cities
 - Roads
 - Rivers and Streams
 - ▭ Subbasin Boundary
 - - - County Boundary
 - Dams
 - ⊕ Culvert-No Passage
 - ⚡ Falls-No Passage
 - ◆ Gradient-No Passage
 - ⊕ Culvert-Conditional Passage
 - ⊕ Culvert-Unknown Passage
- 0 4 8 12 Mi



The fish distribution displayed on this map is provided by the Oregon Department of Fish and Wildlife (ODFW). The data are based on a mix of direct observations and professional opinion by natural resource agency biologists. Please refer to the ODFW fish distribution site for original data and metadata for clarification, <http://rainbow.dfw.state.or.us/nrmp/information/fishdistdata.htm>