




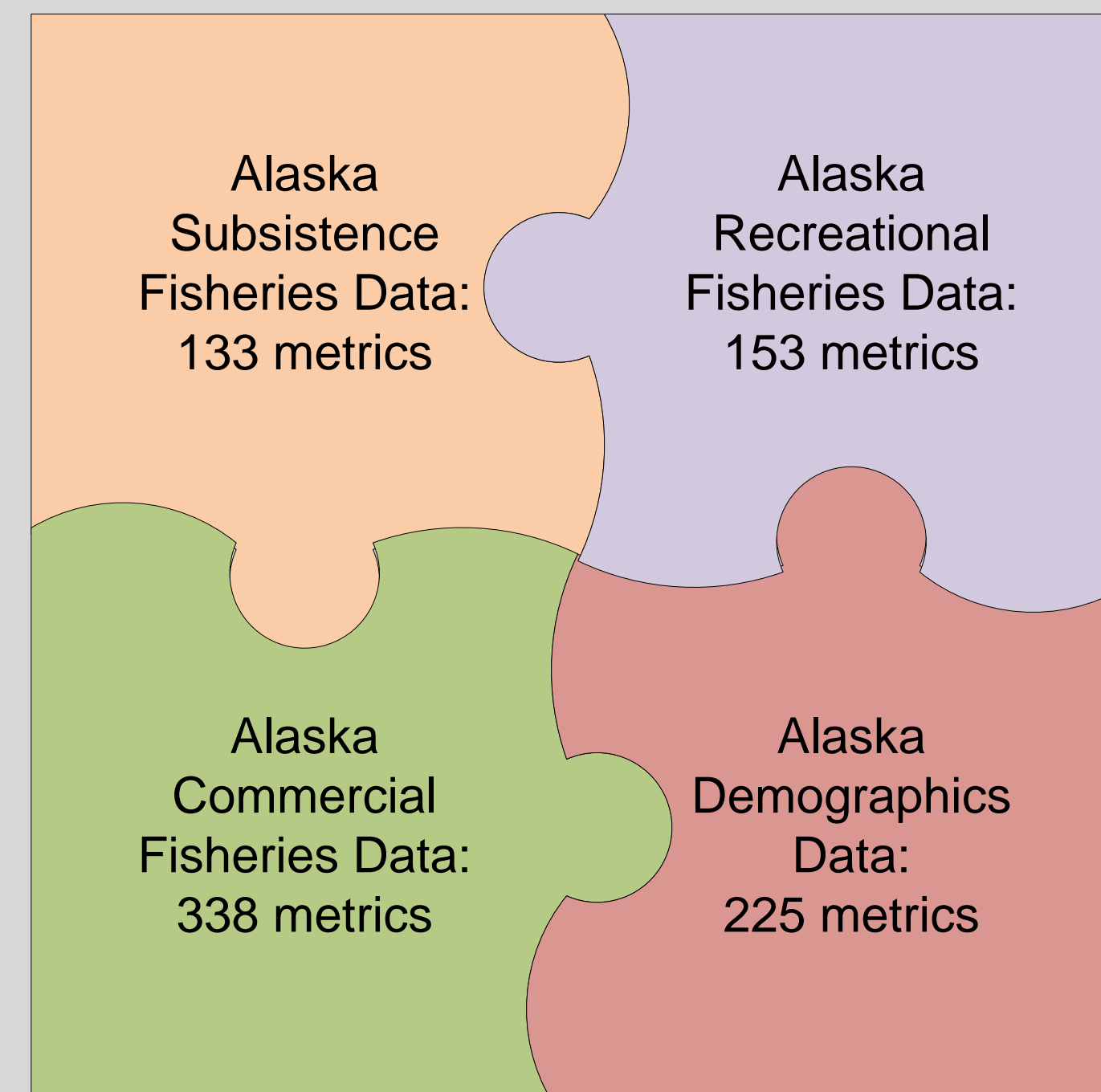
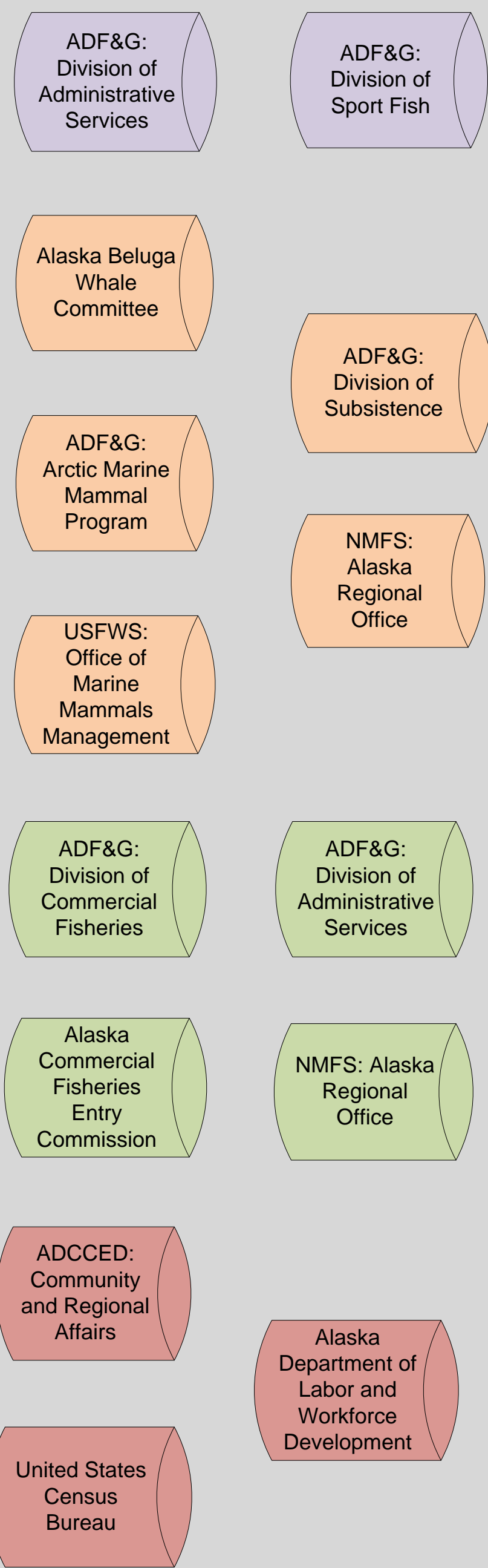
Alaska Community Profiles: Delivering Critical Information About Alaskan Communities

Poster Author: Robert Ames (AKFIN-PSMFC)



Abstract

Developing effective policies and regulations that consider the importance of fishery resources to fishing communities is challenging because comprehensive and consolidated sources of community-based data have not been available for most regions. To fill this need, Alaska Fisheries Information Network (AKFIN), in collaboration with the Alaska Fisheries Science Center (AFSC), acquired and processed Alaska commercial, recreational, and subsistence fisheries data along with census demographics data into a comprehensive collection of over 800 pre-calculated annual statistics for each of the 350 selected Alaskan communities from 1991 to 2011. These metrics are available to authorized users through an online Oracle Business Intelligence reporting tool, which will allow AFSC social scientists to publish an expanded and updated technical memorandum entitled *Community Profiles for North Pacific Fisheries – Alaska* (QR barcode ). These published community profiles, along with AKFIN's comprehensive collection of community metrics, will assist state and federal agencies to shape government policy and to evaluate the social and economic impact of existing regulations on these Alaskan communities.



Dashboards available to AKFIN users

- AKFIN's Oracle BI Dashboards
- Extended Jurisdiction
- AKFIN
- Economic and Social Sciences
- Economic Data Reports
- Fisheries Information System One Stop Shop
- Metrics
- My Data Exports
- North Pacific Fishery Management
- PacFIN
- Stock Assessment
- Usage Tracking

List of interactive reports in the Economic and Social Sciences dashboard

- Community Profiling - Summarized Reports
Summarized data reports developed specifically for exporting and inserting into the Community Profiles. Available 2000 - 2010.
- Community Profiling - Detailed Reports
Detailed reports with all indicators by year and community, including those from the census, commercial, recreational, and subsistence sources. Available for 1991 to the latest reporting year.
- Community Profiling - Full Data Download
Full data download, which includes all census, commercial, recreational and subsistence statistics by year and community. These data can be exported as a comma-separated file (.csv) for all years and communities. Available for 1991 to the latest reporting year.
- Community Profiling - American Communities Survey
Statistics from the American Communities Survey. A selection of these are also available on the main Community Profiling Consolidate Report page.
- Community Profiling - Alaska Sport Fish Survey
Sum of total catch and retained harvest by species, year, and reporting region from the Alaska Sport Fish Survey data. Available for 1991 to the latest reporting year.
- Community Profiling - Community Development Quota (CDQ)
Report on initial allocations, quota transfers, and catch posted from the CDQ program accounts. Available for 1998 to the latest reporting year.

About Alaska Fisheries Information Network

Under the direction of the Pacific States Marine Fisheries Commission (PSMFC), AKFIN was established in 1997 in response to the pressing demand for a comprehensive information management center that would be able to process, store, and distribute the growing volume of data being accumulated by the Alaska fisheries. AKFIN functions as an intermediary network that supports the collection and processing of fisheries' statistics gathered in Alaska. Moreover, AKFIN consolidates this information within a single comprehensive database, provides value-added analysis and interpretation, and then disseminates this information to fishery analysts, managers, and policymakers. AKFIN operates in accordance with the objectives of the PSMFC, which is to support and promote policies that contribute to the conservation, development, and management of our fishery resources in Alaska and on the west coast of the United States.

