

# West Coast Groundfish Trawl IFQ Program

Alia W. Al-Humaidhi ■ Pacific States Marine Fisheries Commission ■ Phone: 503-595-3100



## Overview

In January 2011, NOAA implemented the Pacific Trawl Rationalization Program, or the West Coast Groundfish Individual Fishing Quota (IFQ) Fishery.

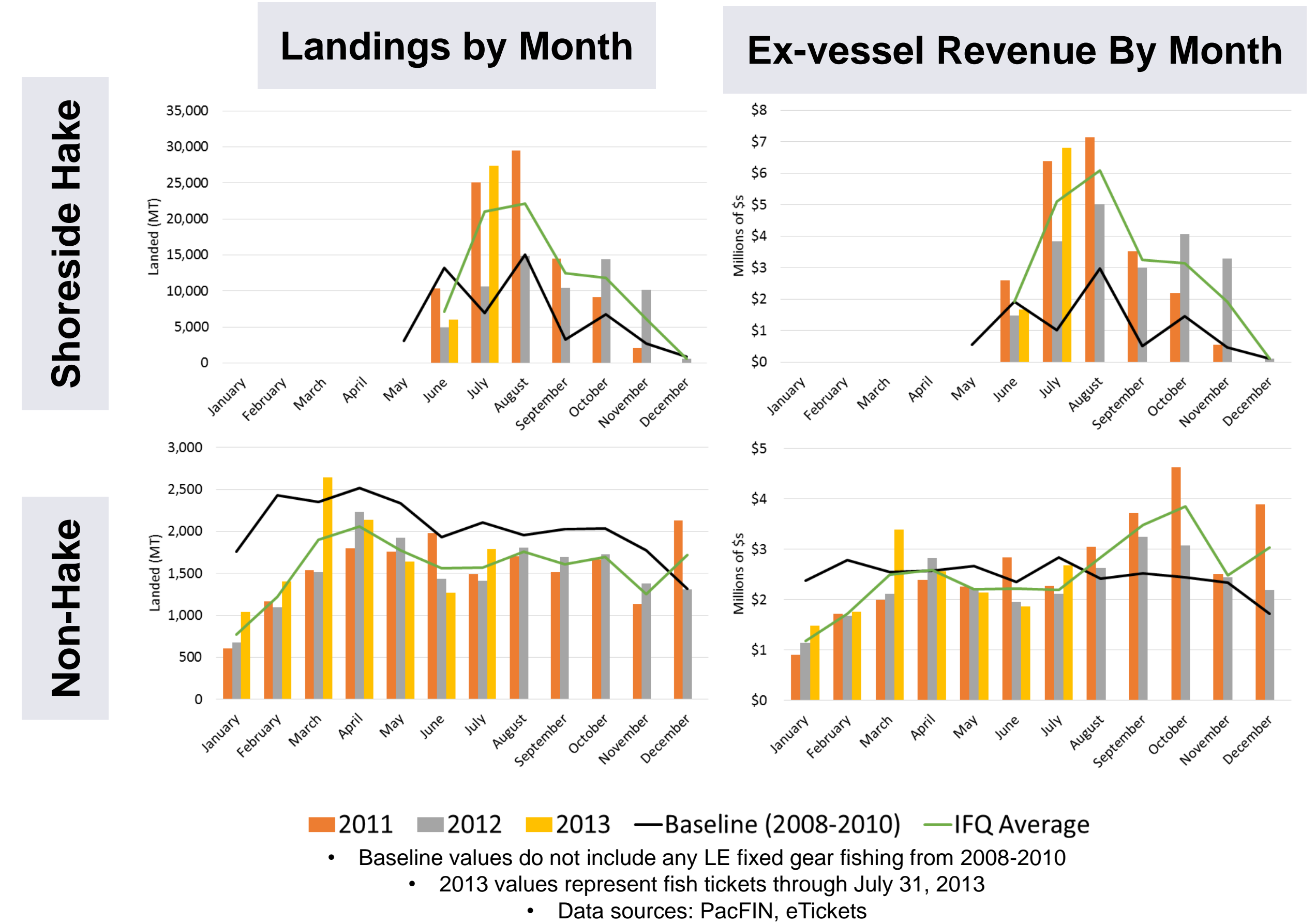
Quota for each species or species grouping is divided by NOAA-NWR among quota share holders allowing fishermen to fish quota when market, weather, and fishing conditions are most favorable.

The fishery consists of roughly four sectors:

At-sea hake, Shoreside hake, Shoreside Fixed gear, Shoreside Bottom trawl

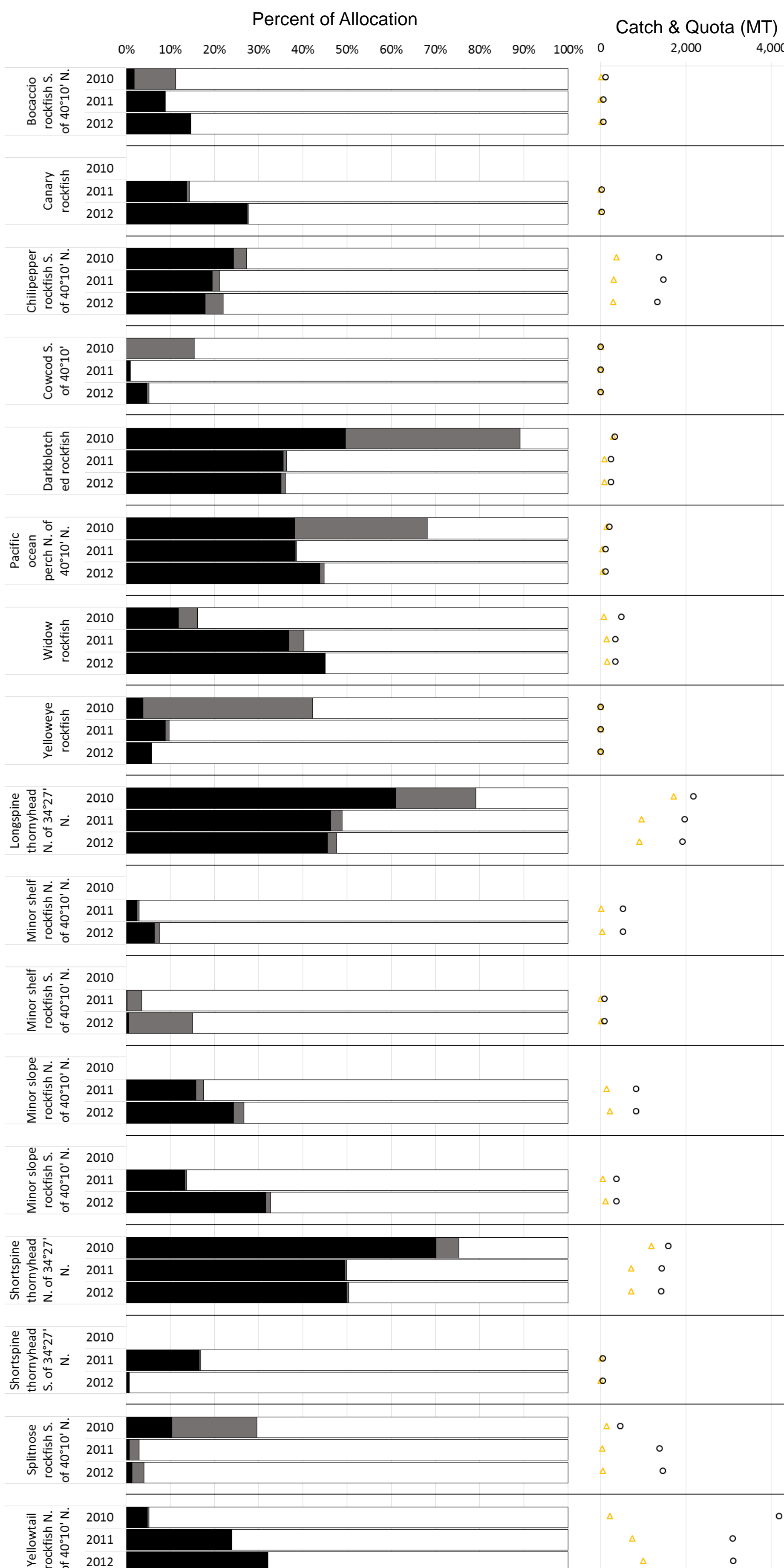
All values presented on this poster represent the shoreside sectors of the IFQ fishery

## Trends – Comparing Pre- and Post- IFQ

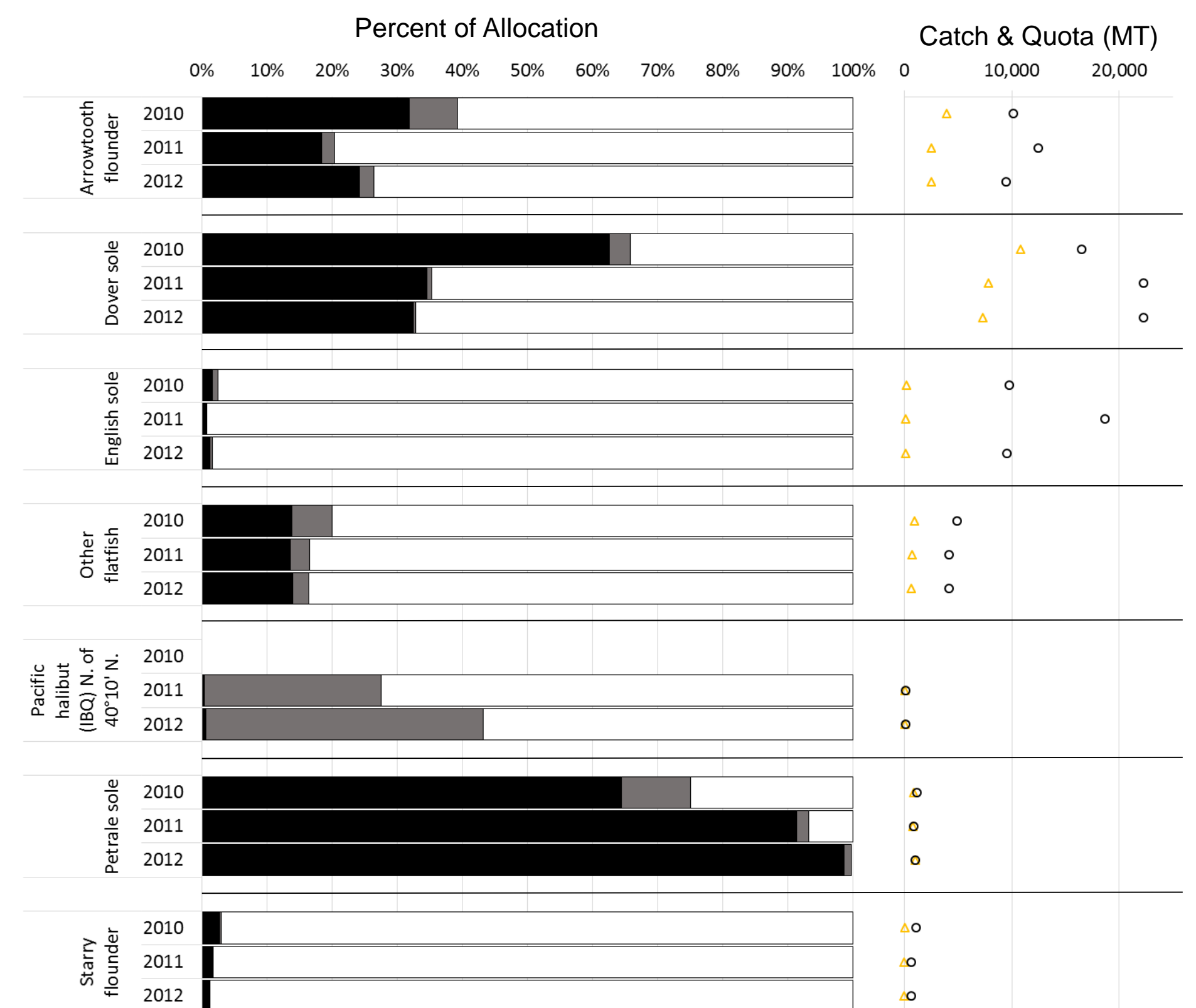


## How much of the allocation for each IFQ grouping was caught (2010 - 2012)?

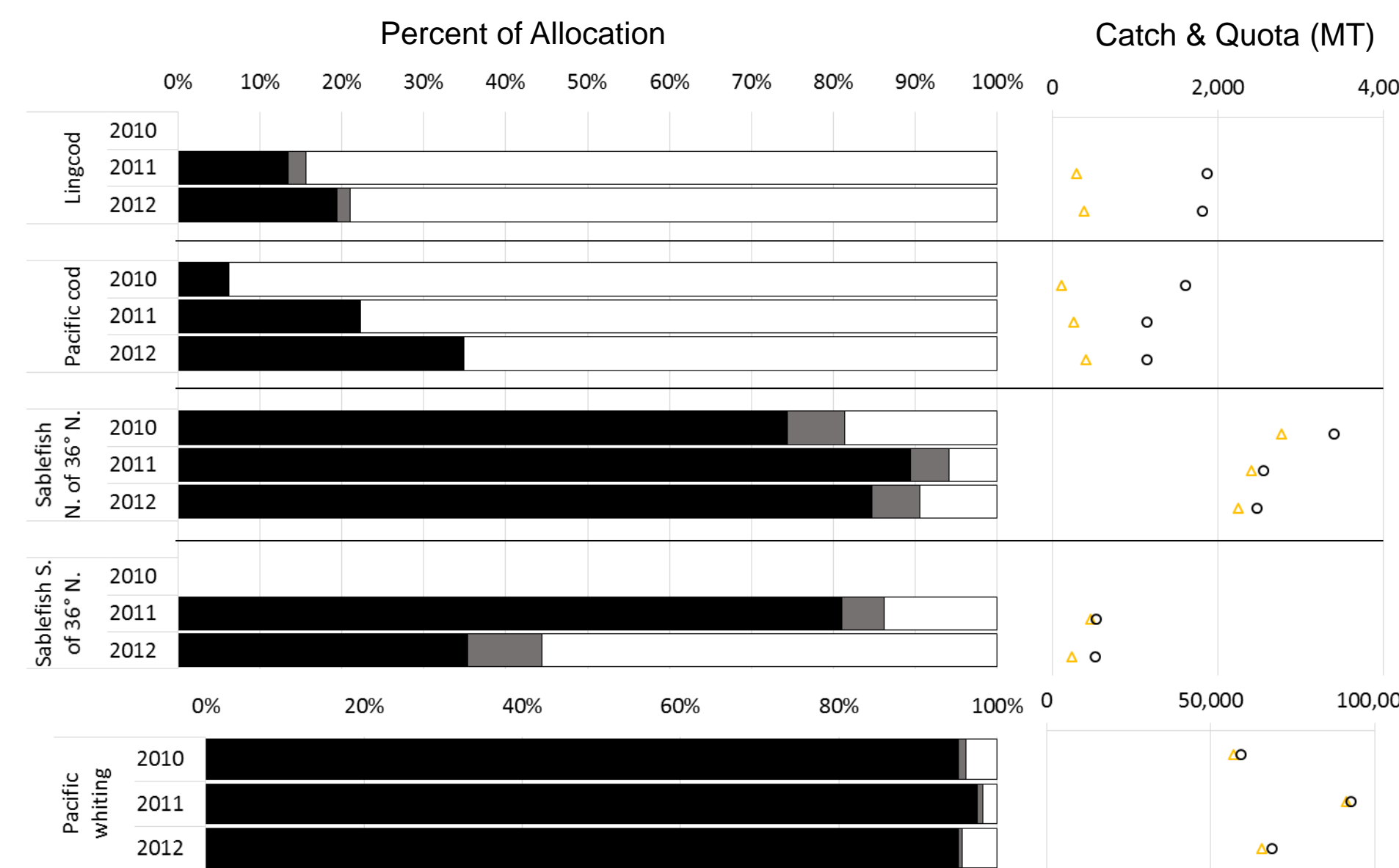
### Rockfish



### Flatfish



### Roundfish

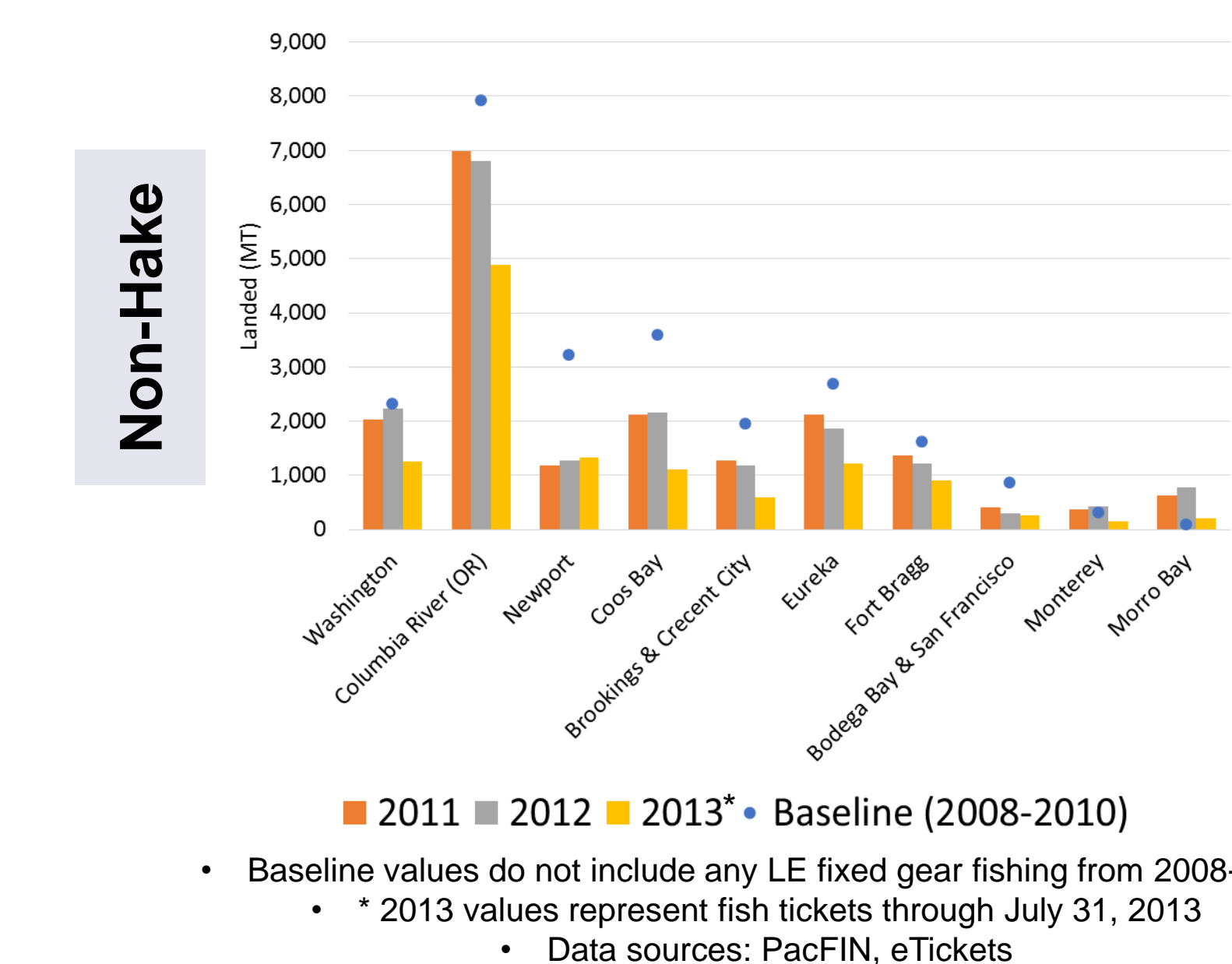


■ Retained ■ Discarded □ Quota Remaining  
▲ Total Catch (MT) ○ Quota Allocated (MT)

Data sources: NWR Vessel Account System, eTickets, 2010 Groundfish Mortality Report  
Bellman, M.A., A.W. Al-Humaidhi, J. Jannot, J. Majewski. 2011. Estimated discard and catch of groundfish species in the 2010 U.S. west coast fisheries. West Coast Groundfish Observer Program. National Marine Fisheries Service, NWFSO, 2725 Montlake Blvd E., Seattle, WA 98112

## Landings by Port Group

- Shoreside hake sector not presented due to confidentiality
- 2013 numbers represent landings through July 31, 2013 only



## Summaries

- 2013 numbers represent landings through July 31, 2013 only

### Shoreside Hake

	2010	2011	2012	2013*
Total Landings (MT)	63,015	90,674	66,065	33,390
Total Ex-Vessel Revenue	\$9,992,027	\$22,412,939	\$20,820,256	\$8,480,810
Number of Vessels	36	26	24	21
Number of Trips	703	894	701	254
Number of First Receivers	20	9	9	15
Average Landing (MT) per trip	89.6	101.4	94.2	131.5
Average Revenue per Trip	\$14,213	\$25,070	\$29,701	\$33,389
Annual Landings (MT) per Vessel	1,750	3,487	2,753	NA
Annual Revenue per Vessel	\$277,556	\$862,036	\$867,511	NA
Average Price per Pound	\$0.07	\$0.11	\$0.14	\$0.12

### Non-Hake

	2010	2011	2012	2013*
Total Landings (MT)	22,921	18,484	18,205	11,923
Total Ex-Vessel Revenue	\$25,934,154	\$32,164,781	\$27,639,830	\$15,876,129
Number of Vessels	106	94	90	89
Number of Trips	2,082	1,480	1,393	759
Number of First Receivers	38	33	29	31
Average Landing (MT) per trip	11.0	12.5	13.1	15.7
Revenue per Trip	\$12,456	\$21,733	\$19,842	\$20,917
Annual Landings (MT) per Vessel	216	197	202	NA
Annual Revenue per Vessel	\$244,662	\$342,179	\$307,109	NA
Average Price per Pound	\$0.51	\$0.79	\$0.69	\$0.60

- 2010 values do not include any LE fixed gear fishing
- \* 2013 values represent fish tickets through July 31, 2013
- Data sources: PacFIN, eTickets

Quota for most IFQ species or groupings were partially caught in 2011 and 2012 in the shoreside sectors. 2010 values for quota utilization are presented for the limited entry (LE) trawl and shoreside hake sectors combined and only for species groupings that either had a sector specific allocation or 90% of the catch estimated in 2010 was made by the LE Trawl and shoreside hake sectors.