



CalFish and the California Fish Passage Assessment Database



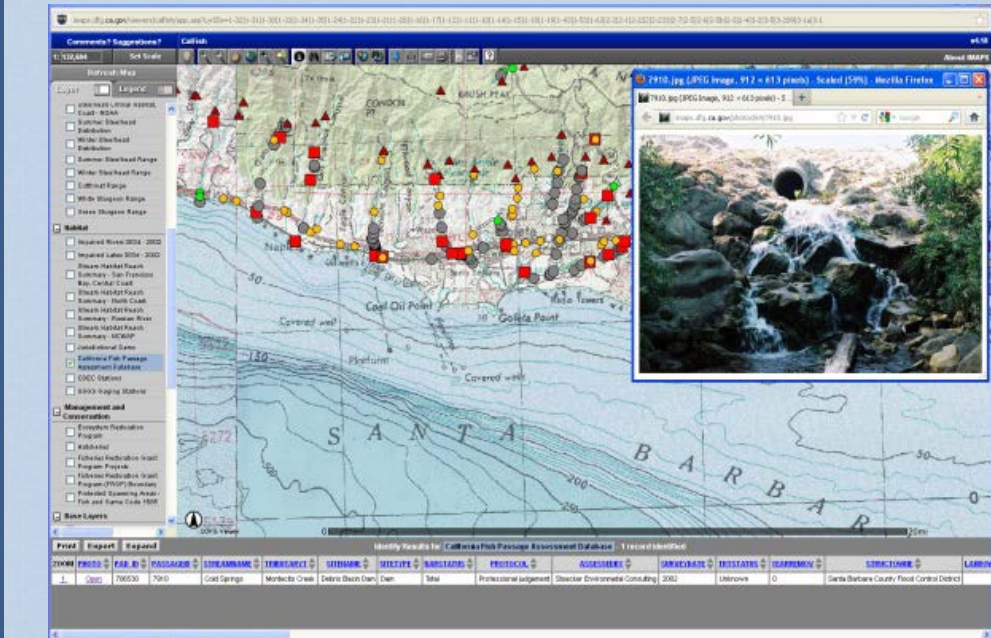
CalFish Overview

CalFish Mission

Create, maintain, and enhance high quality, consistent data that are directly applicable to policy, planning, management, research, and recovery of anadromous fish and related aquatic resources in California.

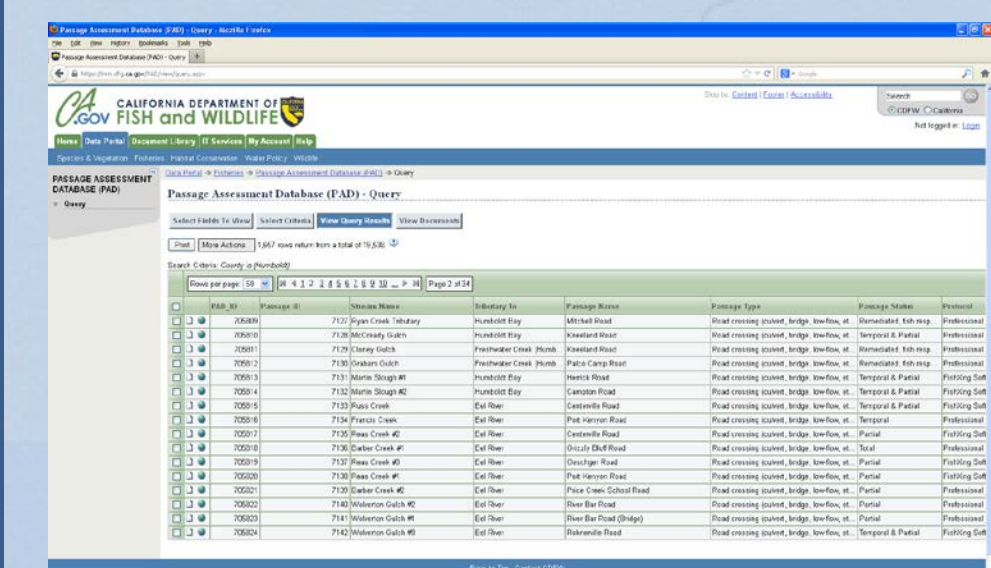
CalFish is a statewide program with a mission to disseminate this data through a centralized web based location available to the public.

Accessing CalFish Data



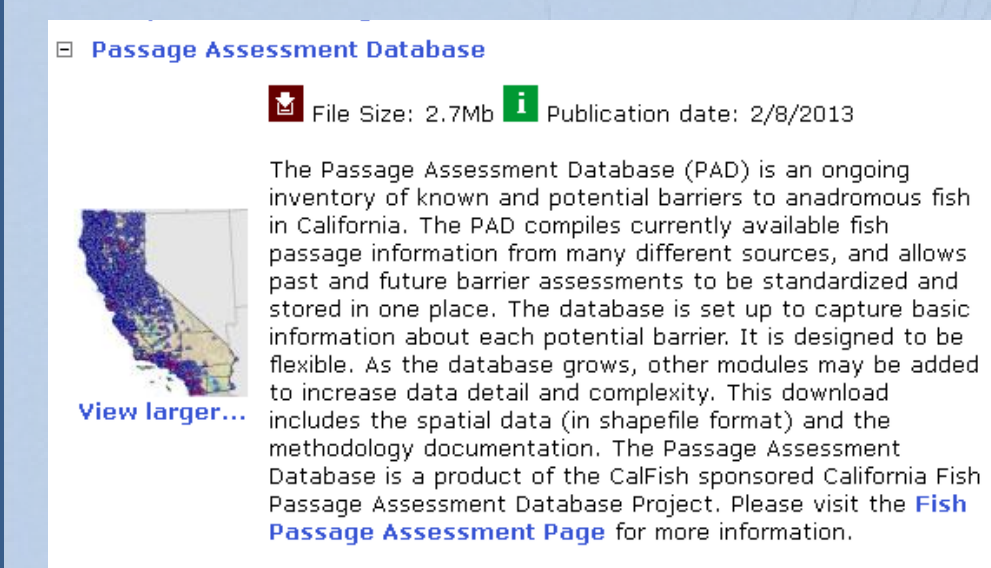
Map Viewer

View geographic data through the CalFish Map Viewer hosted by the California Department of Fish and Wildlife (CDFW).



Tabular Data Queries

Query tabular data through tools created and maintained by Pacific States Marine Fisheries Commission and CDFW.



Data Downloads

Download CalFish datasets in shapefile format.

CalFish Steering Committee

- California Department of Fish and Wildlife
- California Department of Water Resources
- California Department of Transportation
- State Coastal Conservancy
- NOAA Fisheries
- Pacific States Marine Fisheries Commission

CalFish Cooperators

- U.S. Fish and Wildlife Service
- U.S. Forest Service
- Ocean Protection Council

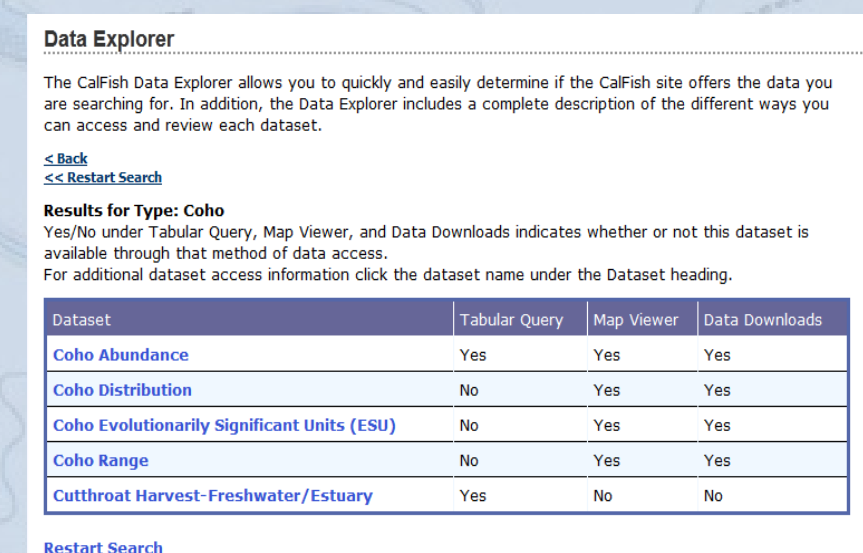


Special thanks to the Fisheries Restoration Grant Program for funding recent CalFish improvements and outreach.

For more information please visit www.calfish.org

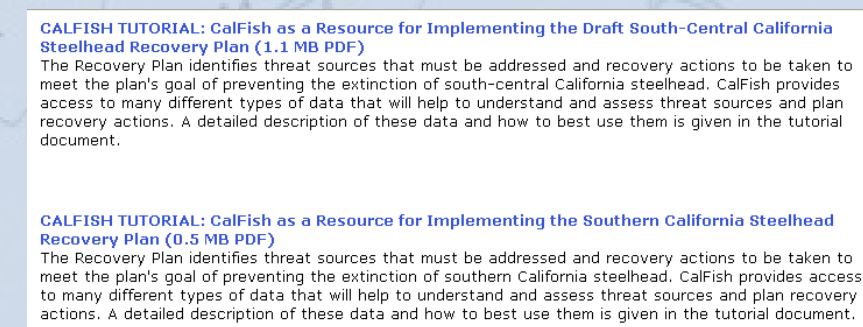
Getting Started With CalFish

CalFish offers a Getting Started page which has a variety of resources to help make using CalFish easier. These resources include links to tutorials, the data explorer tool, FAQ, data tracking report, map viewer bookmarks, site map, and resources page.



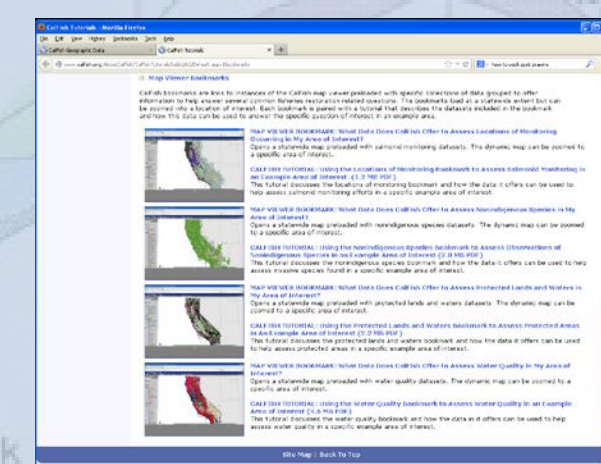
CalFish Data Explorer

The CalFish Data Explorer makes the search for data easier by taking a question based search approach to help find data of interest.



CalFish Tutorials

CalFish is undertaking an effort to make new tutorials available that describe the data that CalFish offers to help assess threat sources and plan recovery actions listed in NOAA recovery plans.



Map Viewer Bookmarks

Map Viewer Bookmarks are links that open the map viewer preloaded with specific collections of data grouped to offer specific information to answer common fisheries related questions.

CalFish Datasets

Currently Available Datasets

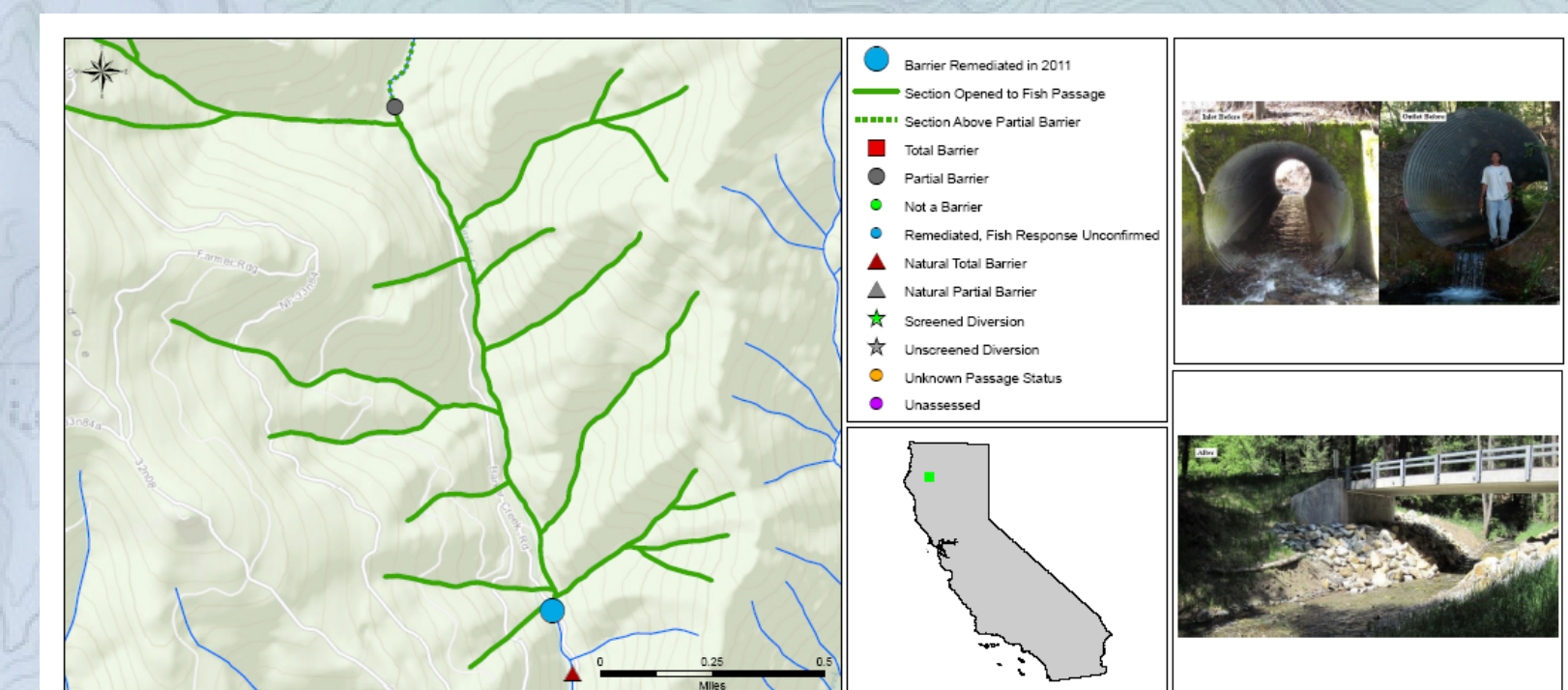
- Chinook abundance, range, ESU, and critical habitat.
- Coho abundance, range, distribution, and ESU.
- Steelhead abundance, range, distribution, DPS, and critical habitat.
- California Fish Passage Assessment Database
- A variety of California specific hydrography.
- Locations of Fisheries Restoration Grant Program funded project sites.
- Stream habitat reach summary data.
- CDEC weather gauging station locations.
- USGS gauging station locations.
- Nonindigenous species observation data.
- CEDEN environmental and water quality stations.
- CDWR Water Data Library water quality stations.
- Fire perimeter data.
- National Fish Habitat Action Plan habitat condition indices.
- Vegetation distribution.
- Map based search for NOAA Authorizations and Permits for Protected Species.
- Protected areas datasets

New Datasets Coming Soon

- Point data mapping the locations of 2011 and 2012 CDFW high priority barriers for removal.
- Map based search tool that offers links to CDFW north coast stream inventory reports available for download.

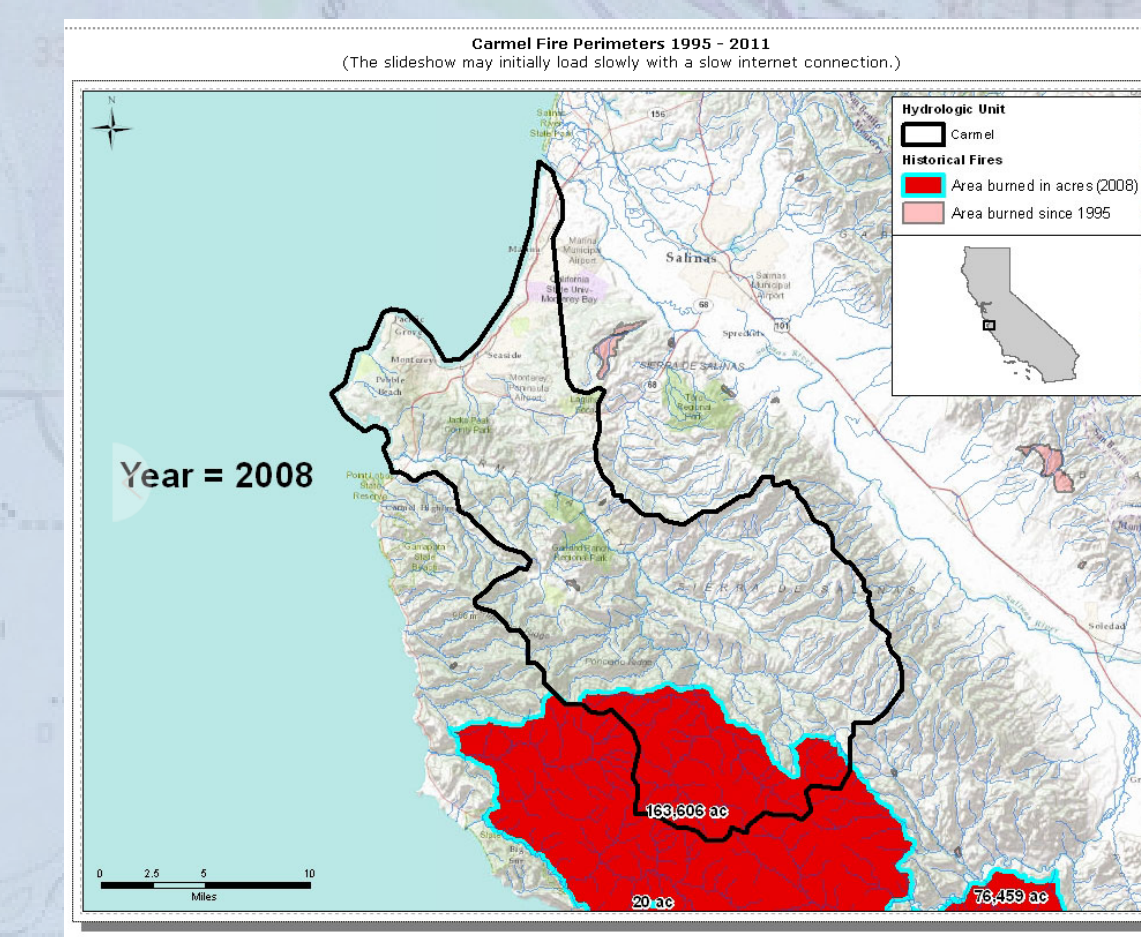
New CalFish Tools

Reports for Fish Passage Barriers Remediated: Starting with barriers removed in 2011 CalFish now offers a map based search tool for reports that describe barriers that were remediated. Each year in the future an updated collection of reports that includes new sites that have been remediated will be made available. This tool is available from the Additional Resources tab of the PAD program page.



Site Name: Culvert	PAD ID: 707810
Stream Name: Barker Creek	Tributary To: Hayfork Creek
Structure Owner: U.S. Forest Service	Barrier Removed By: Not available
Year Removed: 2011	Barrier Status Prior to Removal: Total barrier
Barrier Description Prior to Removal: Circular barrier	Species Benefited After Removal: Not available
Site Description After Removal: Not available	
Site Status After Removal: Remediated, fish response unconfirmed	
Count of Total Barriers Downstream: 1 (total barrier)	Count of Partial Barriers Downstream: 2
Count of Barriers with Unknown Passage Status Downstream: 23	Count of Unremoved Divisions Downstream: 22
Distance to Next Barrier Upstream with Barrier Status and PAD ID: 1.2 miles, Partial barrier, 713308	Distance to End of Natural Anadromy: Unknown
Distance to Next Total Barrier Upstream with PAD ID: Not applicable	

Fire Perimeter Animations: A fire perimeters data layer was recently added to the CalFish Map Viewer. One difficulty associated with visualizing this data in the Map Viewer is that areas often burn more than once over time leading to a dataset with many overlapping shapes. Because of this it can be hard to determine where the fire perimeters for a given year start and end and how fire has affected an area of interest over time. CalFish now offers a series of animated maps to show fire distribution by year for each USGS HUC in the south and south-central coast to help make understanding how the distribution of fires have changed over time a bit easier. These animations are available from the Additional Resources section of the Fire Perimeters program page of the CalFish site.



How can CalFish be improved to increase its value in answering salmonid and watershed restoration questions?

The CalFish team appreciates feedback about what data or tools could be added to make the site more useful and user friendly. Please contact Laura Ryley at laura.ryley@wildlife.ca.gov or (831) 649-7142 with questions or suggestions for improvement.